

Historic, Archive Document

Do not assume content reflects current scientific knowledge, policies, or practices.

IT'S NOT A HOME
UNTIL IT'S PLANTED



Clinton Falls Nursery Co.
Owatonna, Minn.

PRACTICAL SPRAY CALENDAR

CROP	PESTS	WHAT TO USE	DILUTIONS		WHEN TO SPRAY
			Level Tablespoonfuls to 1 Gallon Water	Pounds to 50 Gallons Water	
APPLE	San-Jose and Oyster-Shell Scales and Winter-Mite	Dry Lime Sulfur	9 to 11	12 to 15	In spring when the leafbuds show tip-green.
	Codling Moth, Curculio, Bud-Moth, Scab, Frog-Eye and Blotch	Dry Lime Sulfur and Arsenate of Lead	2½ to 3 and 1½ to 2½	4 to 5 and 1 to 1½	1. When the blossom buds show pink. 2. At the fall of the petals. 3. Ten days to two weeks later. 4. Two weeks after No. 3.
	Second-Brood Codling Moth	Arsenate of Lead	1½ to 2½	1 to 1½	Ten weeks after the fall of the petals. Around Aug. 1.
CHERRY and PLUM	Brown Rot, Leaf-Spot, Curculio and Slug	Dry Lime Sulfur and Arsenate of Lead	2½ to 3 and 1½ to 2½	4 to 5 and 1 to 1½	1. Just before blooming. 2. When the petals fall. 3. Ten days later. 4. Two weeks after the fall of the petals.
		Dry Lime Sulfur	2½ to 3	4 to 5	Just after picking (when leaf spot bad).
	Cherry Fruit-Fly or Maggot	Arsenate of Lead	1½ to 2½	1 to 1½	As soon as the fruit flies appear. In case of rains make additional applications.
GRAPE	Black-Rot, Mildew and Berry-Moth	Bordeaux Mixture and Arsenate of Lead	1½ to 2½ and 1 to 1½	1 to 1½ and 1 to 2	1. When shoots are 8 to 10 inches long. 2. Just before blooming. 3. Just after the blossoms fall. 4. Two weeks later.
CURRANT and GOOSEBERRY	Mildew	Dry Lime Sulfur	9 to 11	12 to 15	When the buds begin to open.
		Dry Lime Sulfur	2½ to 3	4 to 5	Every ten days after the buds begin to open, making three applications.
	Currant Worm	Arsenate of Lead	4½ to 2½	1 to 1½	When the worms first appear.
BUSH-FRUIT (BLACKBERRY LOGANBERRY RASPBERRY)	Rose-Scale, Cane-Blight, Leaf-Spot and Anthracnose	Dry Lime Sulfur	9 to 11	12 to 15	In spring before growth starts.
	Anthracnose	Dry Lime Sulfur	2½ to 3	4 to 5	Just before the bloom.
STRAWBERRY	Leaf-Spot, Flea Beetle and Leaf-Roller	Bordeaux Mixture and Arsenate of Lead	1½ to 2½ and 1 to 1½	1 to 1½ and 1 to 2	1. Before the blossoms open. 2. As soon as the fruit has been picked. Additional applications will depend upon the presence of Leaf-Roller larvae and Flea-Beetle.
SHADE-TREES and SHRUBS	Scale insects including Oyster-Shell European Elm	Dry Lime Sulfur	9 to 11	12 to 15	In spring before the buds open.
	Cottony-Maple Tulip Pine-Leaf and Terrapin Scales	Miscible Oil	Directions	on container	In spring before buds open.
	Tussock Moth	Arsenate of Lead	4½	3	As soon as the caterpillars appear.
	Brown Tail Moth	Arsenate of Lead	4½	3	Spray at the time pear blossoms are falling and in August. Burn the winter nests.
	Gypsy Moth	Arsenate of Lead	4½	3	Spray when the caterpillars first appear.
FLOWERS	Leaf-eating insects	Arsenate of Lead	1½ to 2½	1 to 1½	As soon as the slugs or worms appear.

NOTE 1: Whenever aphid (plant lice) appear on fruit trees, vegetables, shade trees, shrubs and flowers, spray with Nicotine Sulfate at the rate of 1 level tablespoonful to 1 gallon of water or ¼ pint to 50 gallons of water.

NOTE 2: This spray program is made primarily for growers in regions where climate conditions are similar to those in Minnesota.

NOTE 3: Ingredients and instructions for Bordeaux Mixture can be obtained at any drug store.

GENERAL INDEX

	Page		Page
Apples	8	Introductory	1
Apples (Crabs)	10	Iris	28
Apples (Perkins Seedlings)	11	Landscape Gardening	20
Asparagus	19	Lilies	29
Blackberries	17	Nut Trees	39
Bulbs, for Fall Planting	26	Orchard Plan	6
Bulbs, for Spring Planting	27	Orchard Planting	6
Cherries	14	Ornamental Hedges	36
Climbing Vines	30	Pears	15
Currants	16	Peonies	26
Evergreens	41	Perennials	23
Flowering Shrubs	31	Phlox	25
Forest Tree Seedlings	39	Plums	11
Forest Tree Seedlings	37	Raspberries	17
General Information	3	Roses	29
Gooseberries	16	Rhubarb	19
Grapes	15	Shade and Ornamental Trees	37
Hedges	36	Spray Program	Inside Front Cover
Horse Radish	19	Strawberries	18
Information Tables	43		

Gentlemen:

We take pleasure in presenting you, with our compliments, our new nursery catalog. This book is the product of our modern printing department which is equipped to do a general line of nursery printing in both plain black and white or colors. We would welcome an opportunity to quote you prices on any of your printing requirements.

CLINTON FALLS NURSERY CO.

Cashman Printing Co. Division.





FOREWORD

IN presenting this catalog to our customers we do so with a great deal of pride and satisfaction. This year will complete our thirtieth year in the nursery business. We started thirty years ago without land, money, equipment, or experience, consequently the first few years were full of trials, discouragements, and disappointments.

Our early experience in the propagation of nursery stock (which is highly technical and hazardous in the beginning of a tree or plant's life) was like other beginners in the business—big losses, and poorly grown trees and plants was the result. Finally we mustered enough money so we were able to hire a man who had had some experience and from him we gained a little knowledge of the intricate features of propagating nursery stock. Better stock made friends, and more business, which gave us money to hire more expert propagators, construct modern buildings, and equipment, to purchase land and to propagate, plant, and grow scientifically large quantities of all kinds and varieties of trees, shrubs, and plants that can be grown successfully in the central northwest.

Our chief satisfaction is not wholly the fact that we have weathered the storm financially, but because we have reached the goal where we can honestly say that no concern grows better nursery stock, no concern grades more closely—in fact, the stock we reject as unfit for our retail trade now, is much better in many cases than that produced and delivered during the first years of our existence—and no concern spends more, and few as much, in time and money in packing each bundle and protecting the roots so they will reach the customer in prime condition. The facts are that it has taken us thirty years to reach the position where we can give 100% service. All the money that we have made thus far, outside of a living, has gone into our plant—land equipment, buildings, and well grown nursery stock. It has taken the better part of a lifetime of persistent, painstaking, honest endeavor to reach the position that we have now attained.

From now on, there will be no question about us being able to furnish the best that skill and money can produce—nursery stock true to name, each tree and shrub labeled so there can be no substitution—and to serve, in every case, in a manner that will give a full measure of satisfaction to all who deal with us. For some time back, we have been able to say that no tree, shrub or plant has left this place that was not as near the state of perfection as is humanly possible to make it, and it will be our policy to steadfastly follow that course in the future.

Trees and plants that are perfect, or nearly so, do not happen by chance; they are made perfect by painstaking, intelligent methods and persistent work, all of which takes money

to bring about, particularly in this northern region where we don't get more than half the growth in a season that is attained in the sunny south. It costs more than twice as much to grow nursery stock in the north as it does in the south, because, as stated, a tree or plant doesn't attain more than half the growth, but if we are to furnish stock that will live out its expectancy without climatic injury, the stock must be grown in this northern region. Growing practically all of our stock here, hiring the most scientific men that can be secured, grading to a point where every tree, shrub, and plant is either at, or near, the state of perfection, assures success to the customers we serve.

As the greatest cost to the customer is the cost of preparing land, planting, and caring for the stock after it is planted, you cannot afford to waste time, or money, on anything but good stock that is grown in this northern climate, and as that class of

stock costs several times more to produce than poorly grown stock that is handled in a slipshod, don't care manner, or seconds and thirds that are graded out of good stock, or stock that is grown in the south, we must ask a price that is in keeping with the quality of stock furnished, and that will enable us to keep up the high standard we are attempting to maintain. A poor tree or plant, or one not adapted to the climate, is dear at any price so don't be misled by those who would sell cheap for people usually get what they pay for in nursery stock the same as any other goods they purchase.

Believing that next to supplying A No. 1 stock, true to name, the greatest service we are performing is through the efficient and trustworthy salesmen who represent us. The customer always profits by being able to deal with a representative on the grounds, a man who is qualified to give advice as to where and in what manner the trees and plants should be planted, trimmed, pruned, sprayed, and protected so that full results may be obtained. The service rendered by the honest, intelligent, and trustworthy salesman can hardly be estimated. We have a crew of picked men that we believe in, and have confidence in, and we are firmly of the opinion that they are performing a very valuable service for our customers. We want our customers to ask our men to help them, not only in designing for landscape work, but in the preparation, not only for a new orchard, but handling of the old. Our men are charged with the responsibility of serving our customers and we hope our customers will make use of them to advantage.

We take this occasion to thank the thousands of customers who have patronized us in the past, and made it possible for us to build an institution which has been made possible by patronage and hard work. The plant belongs to the northwest because the northwest has furnished the wherewithal to build it, and we want our cus-

THOS. CASHMAN
PRESIDENT

M.R. CASHMAN
VICE PRESIDENT

J.E. CASHMAN
TREASURER

**CLINTON FALLS
NURSERY CO.**

W. H. HART
SECRETARY

J. A. CIESZINSKI
CASHIER



tomers to know that we feel it our duty to serve you with nursery stock at prices that will give value received, with one hundred per cent added in every case, and when we say one hundred per cent added, we mean just that, for we know that there isn't anything that can be sown or planted, on good land, that is properly cared for that will produce half the results in monetary value, in health, in the beautifying of home surroundings, in comfort, or the enhancing of property values as the well grown tree, shrub, or plant adapted to the climate, set out and cared for intelligently.

Yours for honest service.
CLINTON FALLS
NURSERY COMPANY,
 Thos. E. Cashman,
 President.

Ample Facilities

To handle a volume of business often reaching a half million dollars a year requires an abundance of storing, packing and shipping facilities. It has been found that trees and shrubs dug in the fall and properly stored and cared for come out in the spring in better shape for planting than when dug in the spring. This does not apply, however, to evergreens and strawberries, which must be dug in the spring. Our frost proof storage cellar and packing shed cover nearly an acre of ground with a storing capacity of one hundred carloads of nursery stock.

Shipping Facilities

Our shipping facilities are all that could be wished for. We have our own private track connecting with the C. & N. W. Ry., over which cars are run into the packing shed for loading. We also have transfer facilities to the C., M. & St. P. and the Rock Island is only a short distance from our plant which enables us to route shipments for quick delivery in any direction.

Greenhouses in Connection

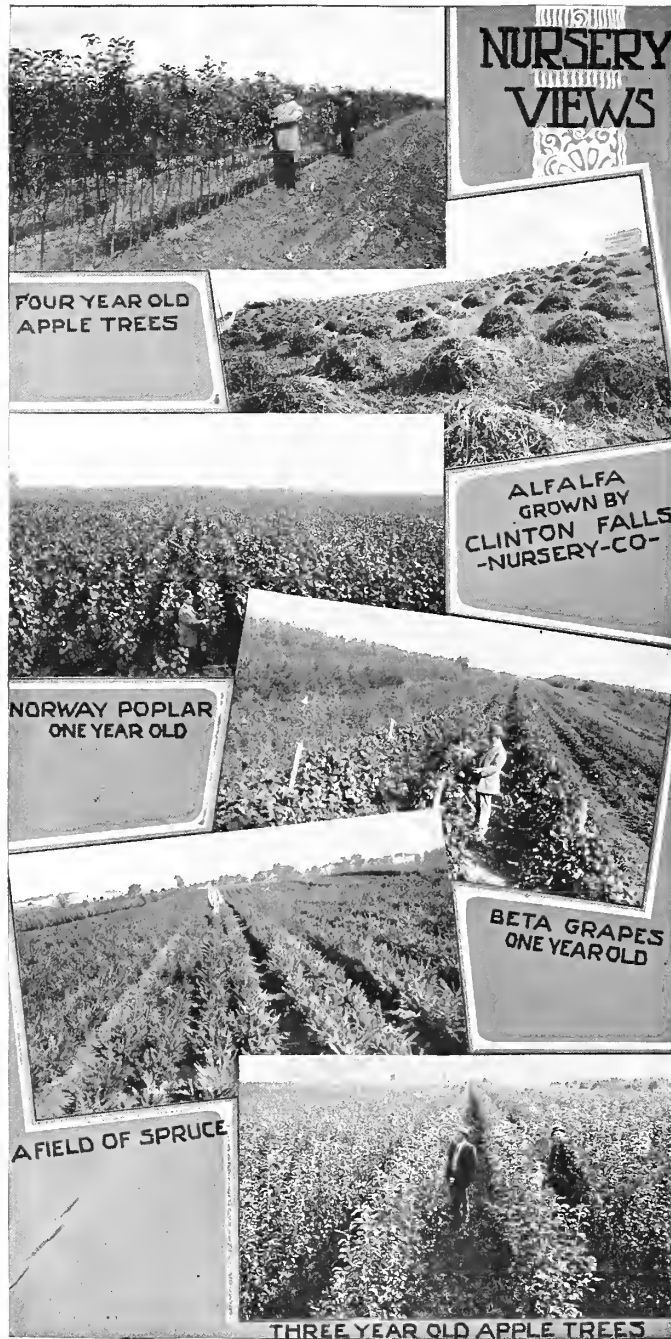
We own and operate one of the largest greenhouses in the northwest, have a staff of the most efficient designers that are on duty day and night. We are prepared to take care of funeral designs and bride's bouquets in prompt and up-to-date manner. We specialize in household decorations for all occasions. Our train service is splendid, reaching all sections of the country. Members of Florists Telegraph Delivery. Flowers sent by wire to all parts of the world.

Seed Department

Our Seed Department, which was established about twenty years ago has grown steadily every year and now "Cashman's Seeds of Quality" are known over a wide territory throughout Minnesota and the Dakotas.

Service Department

In order to build a plant of this size up to a high standard of efficiency we find it necessary to maintain several service departments, including garage and machine shop, where our fifty or more cars and trucks are taken care of, blacksmith shop, carpenter and wagon shop, box factory, etc. We also operate



our own printing office equipped with Miehle and Gordon presses, type and machinery, where all our catalogs, circulars, stationery, etc., are turned out.

Hereford Cattle, Duroc Hogs

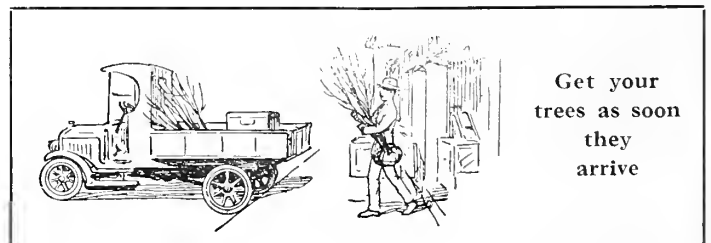
The fertility, upkeep of the land is a primary requisite to the maintenance of a successful nursery. For this purpose there is nothing better than barnyard manure, so that the addition of a livestock department soon became necessary. In 1902 Mr. Cashman began the building of a herd of full blooded Herefords, selecting the Anxiety 4th strain. This herd now numbers over 150 head of breeding females and is headed by some of the best bulls to be found anywhere. The raising of Duroc Jersey hogs also being carried on extensively on some of the farms.

Visitors Always Welcome

No pen picture can possibly give the reader a comprehensive idea of the large scale upon which this business is carried on. We are pleased at all times to have our friends and customers call and look over the many different departments and will try our best to make you welcome. In the summer you will have an opportunity of seeing millions and millions of trees, shrubs and plants in all stages of propagation.

Leave a Monument

Each home builder is entitled to some recognition for the good that he has accomplished in this life—a reminder to those who come after us that there once lived on that parcel of land a man or woman who had done something for posterity. Monuments are erected to mark our last resting place. Why not leave a monument that is more lasting and tells the story far better than granite or stone? Such can be accomplished through the planting of some of our long lived beautiful trees such as the American Elm, Colorado Blue Spruce, Black Hills Spruce and many others. If good northern trees are selected, and planted on heavy soil, the life of such trees is said to be two hundred years or more. Why not select that living monument this Spring, plant it yourself, care for it, and protect it during the years that it needs protection? If given a proper start, it will tell the story of the part that you had in its existence, and will be a joy and comfort during your days, and a splendid monument to you years after you are gone.





EDWARD KRAUSE
General Superintendent



AND. KUBIATOWICZ
Supt. of Propagation



BERNARD KRAUSE
Assistant Superintendent



HERMAN HINCHESKI
Supt. Ornamental and
Street Tree Dept.



JOHN MACK
Purchasing Agent and Farm
Superintendent

General Information

Where to Plant

As a rule any well drained land suited to farm and garden crops will prove satisfactory for the general planting of trees and shrubs in the Northwest. The laying out of a grove or orchard, where a landscape gardener is not employed, should be done with care and it is always well to draw a complete diagram before planting is started. Many people have made the mistake of planting their outside groves or wind break too close to the buildings, making it impossible to get the best results from inside planting later on. If planting a wind break, be sure to go back far enough for orchard, garden and shrubbery to be planted inside without being crowded and to allow for a free and plentiful circulation of air on the inside. Fruit trees, being expected to grow and produce fruit at the same time, should be planted on land that is fairly rich and which has been well cultivated and drained. Where possible it is better to plant apple and plum orchards on a north or east slope. A southern slope is the least desirable owing to the fact that the sun brings the frost out of the ground earlier in the spring and freezing and thawing of the ground at the trunk is very liable to cause damage to the roots. However, where no other place is available this can be overcome by a heavy mulch as described later on.

How to Plant

First be sure that the ground is well worked up and fertile. Unless a very few trees are to be set, it is much faster and also better to use a plow for planting. First mark out your rows the desired distance apart, and run the plow back and forth in the same furrow at least five or six times with a man riding on the beam, throwing the dirt out each way, and making the furrow as deep as possible. Trees can then be set in their place, packing sufficient fresh dirt firmly around the roots to sustain the tree in an upright position. Then with one horse, run the plow back and forth on each side of the row, throwing loose dirt back into the trench. After this is done, pack the dirt firmly around each tree. It is well to run these furrows one at a time and follow up with the planting, so that the dirt will not have a chance to be

dried out by the sun and wind and will retain the natural moisture of the ground, which is very essential to trees. If necessary to plant in sod the ground should be loosened for a distance of from two to three feet from the tree each way according to the size. Dig the holes large enough to allow the roots to be layed in without bending and deep enough for the roots to be covered a few inches deeper than they were in the nursery row. If the trench where trees are healed in is any distance from the place they are to be planted, it is well to uncover a few at a time and place them in a pail of mud. In that way they can be carried to the field and taken out one at a time without being exposed.

When to Plant

In Minnesota and the Dakotas the proper time to plant trees or shrubs is in April or May, according to the season. Hardy perennials do well when planted in the fall but they also succeed well when planted in the spring. Tulips, Narcissi, Hyacinths and the Dutch bulbs can only be planted in the fall, generally in September or October.

Care of Nursery Stock

It is safe to say that seventy-five per cent of the nursery stock that fails to grow, or does grow but is always stunted and weak, is due to improper handling after it is received by the customer. It cannot be impressed too strongly upon planters the necessity of keeping the roots from the sun or wind. When the stock is received, open the bundle in the shade out of the wind and if you are not ready to plant immediately, heal the roots in the ground, soaking them well as you do. If well healed in they can be kept without damage for a reasonable time. However, the sooner trees are set in their permanent place after being opened the better.

Pack Dirt Firmly

As the trees are placed in the hole with the roots carefully spread out, pull in the earth a little at a time and pack it firmly with the hands until there is enough to prevent bruising the



ALBERT KOTZ
Supt. of Storage Nursery
Stock and Small Fruit
Dept.



LEO HERZOG
Supt. and Propagator of
Apple and Plum
Dept.



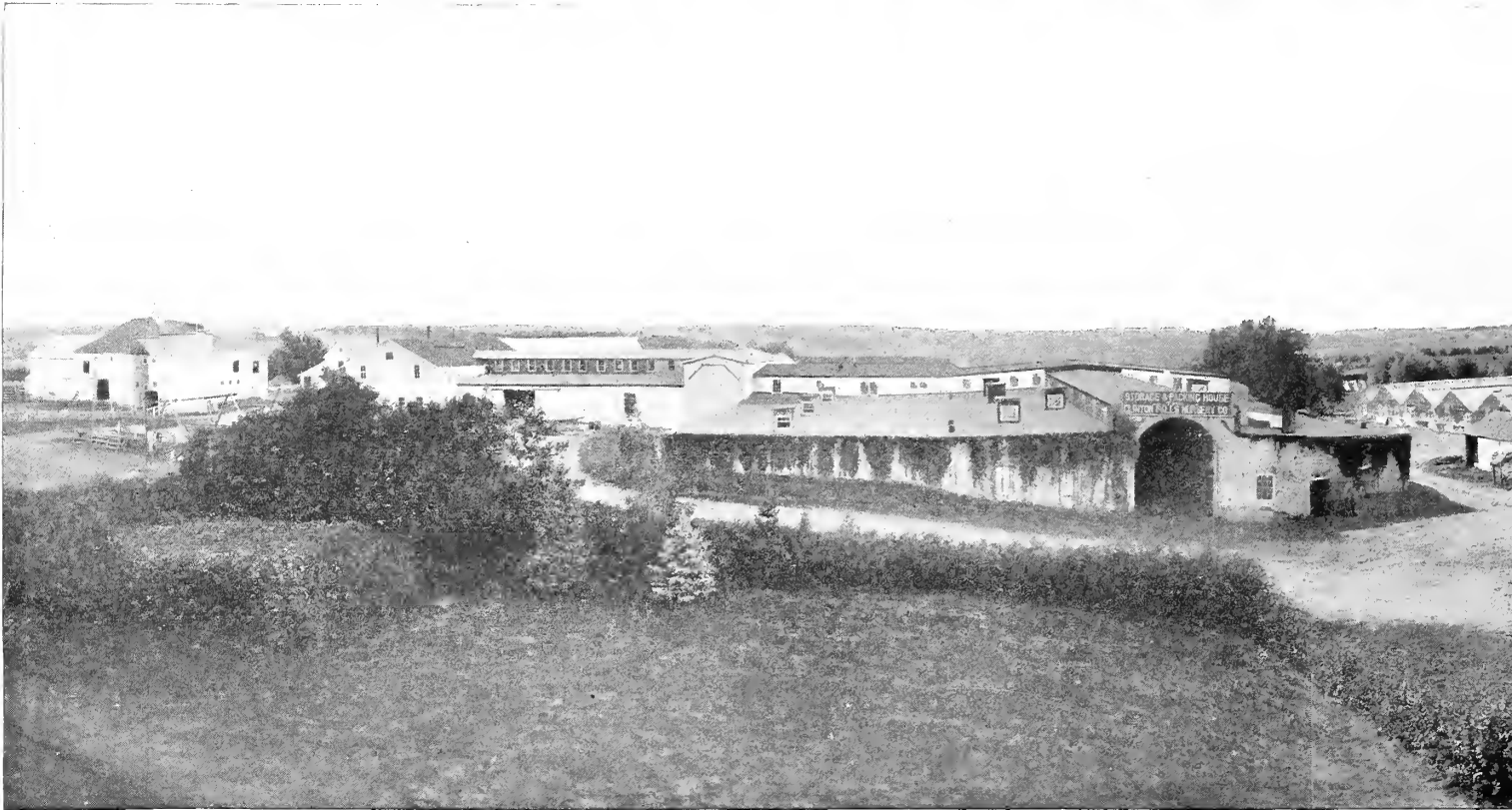
JOSEPH STEPHANEK
Supt. of Ornamental
Evergreen Dept.



ALBERT JENSEN
Asst. Supt. Ornamental
and Street Tree Dept.



ROBERT PETERSON
Asst. Nursery Foreman



roots when stamping it with the foot. Fill the hole up, packing the earth as firmly as possible as you go. Finish with a little loose dirt and allow the ground to slope toward the trees to collect moisture.

Pruning is Essential

Pruning is a very important matter and should be done with care and judgment. If too much wood is left above the ground the roots will not be able to supply it with moisture and the consequences will be a serious set-back or possible failure. Use a sharp knife or pruning shears and cut away all bruised or broken roots. On fruit trees, the stems should now be put in condition for the formation of the top by removing all the limbs to the point where it is desired to have the top; then cut back each remaining limb, leaving from four to six buds of last season's growth. In the absence of any limbs suitable to form a top, cut the trees down to the requisite height, leaving the dormant buds to make the top. Pruning vigorously at time of setting is generally very distasteful to the planter, as it injures for a time the appearance of the tree to an unpracticed eye. It should, however, be unhesitatingly performed, all the branches to the extent of at least one-half the length of the previous year's growth being removed. Care should also be used to give the proper form to the tree. The head may be left high or low, as the taste of the

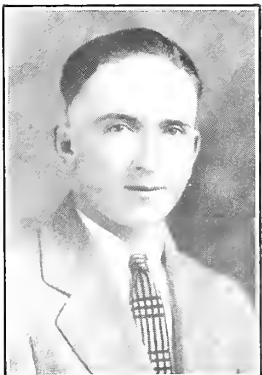
planter may prefer, or as the nature of the tree in some cases may require. Large shade trees should be cut down to about two-thirds their height and all or nearly all of the branches removed, leaving the naked stem to form a new head. It is a good idea to wrap the lower half of the trees with burlap to protect them from sun scald until the branches are large enough to shade them. In the case of most bush fruits and ornamental shrubs the pruning should be even more severe, leaving but little above the ground. Evergreens are of a different nature and should not be pruned.

Should be Mulched

Mulching is also a very important matter and all young trees should be well mulched with hay or straw as soon as planted to retain the moisture in the ground around the trunk and also keep down weeds and grass. Never use fresh manure as a mulch as it is very liable to damage the tree.

Spraying is Necessary

Fruit trees and bushes, like other forms of life, cannot do their best while infected by disease or infested with insects. Spraying should be carefully and thoroughly done and at the proper time. On the inside front cover we show a spray calendar that we have carefully worked out with the aid of entomologist and plant path-



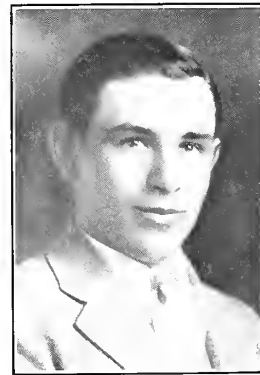
BARNEY HERZOG
Propagator



CHRIS CASPERON
Evergreen Specialist



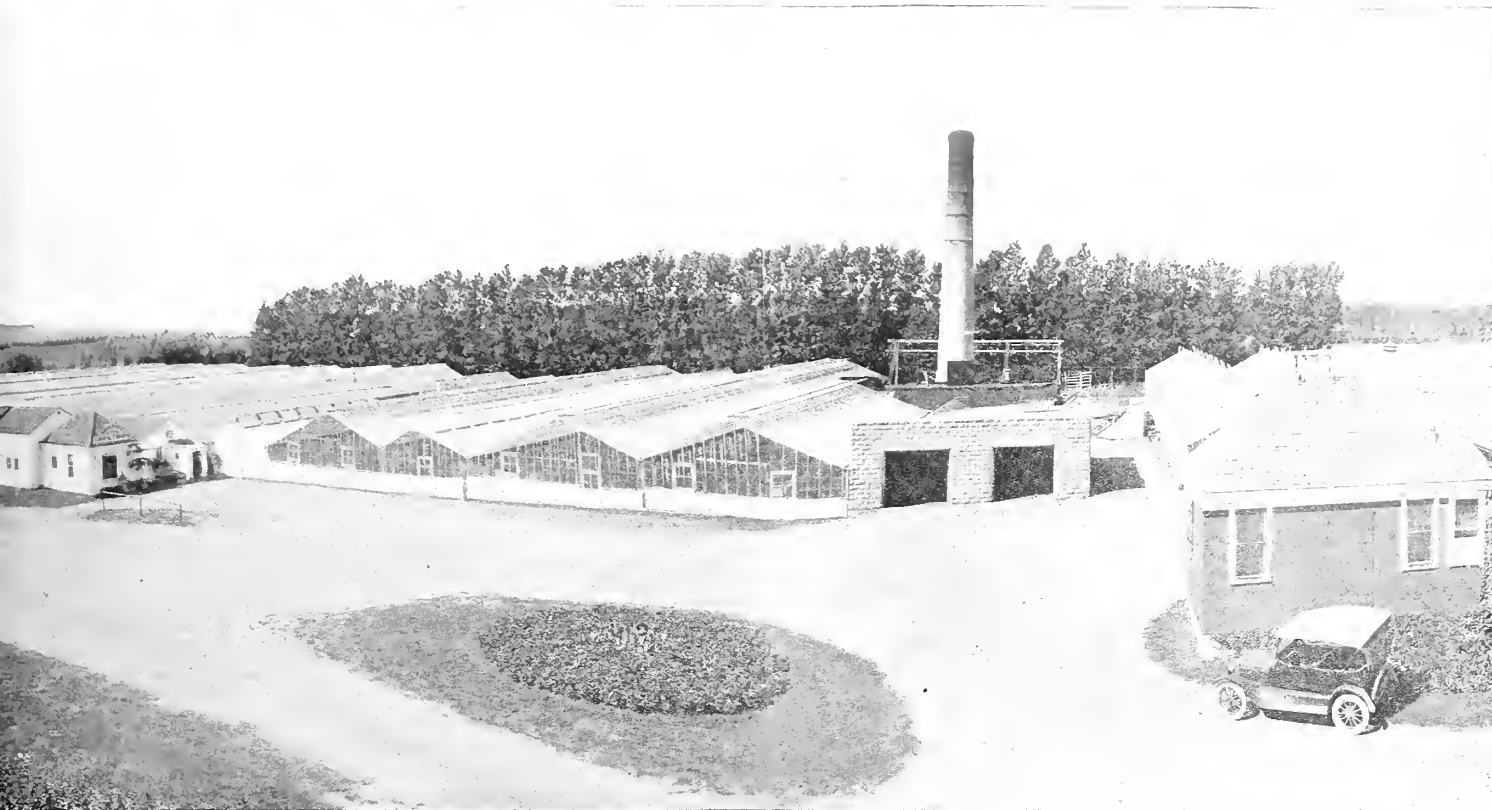
NICOLAS CIECIMEROWSKI
Stockman and Propagator



LAWRENCE McDONALD
Supt. Mail Dept. and
Asst. Nursery Foreman



ANTHONY KUBIATOWICZ
Assistant Propagator



ologists and which is deemed best suited to conditions in the central Northwest.

Protection Against Mice

Protection by banking up the trunks of young trees about one foot on the approach of winter is a good practice. It protects the graft and is sufficient barrier against mice, unless there is a deep fall of snow. This is not a very laborious matter for about three spadeful of soil is enough for each tree. When there is danger of mice working under the snow, trod it down quite firmly around the trees. To guard against mice and rabbits when not otherwise protected, wash the stems with thin white wash thickened with copperas and sulphur. If this is washed off by rains renew the wash as often as necessary.

To Eradicate Red Spider

During the last few years Red Spider has attacked most varieties of Evergreens, and must be dealt with in order to save the trees. The Red Spider is a very small red bug that is hardly discernible with the naked eye; if it is taken in time, it will not injure the tree.

There are two methods to combat them. One is by the use of common glue to the extent of five pounds to fifty gallons of

water, saturating the tree thoroughly with this solution. The Spider will become encased and will not do any more damage. A second application may be necessary but not often. In order to get the best results, it should be put on with a spray pump that has considerable pressure—200 lb. pressure is required if the best results are obtained, but if a person hasn't a spray pump, they can swish it on with a broom or window washer. The other is by the use of "Kolodust," a powder which can be blown on with a hand sprayer and kills the insect outright. If this cannot be obtained locally we can furnish it at the following prices: 1 lb. 35c; 5 lbs. \$1.50.

Varieties That Are Hardy

As the bulk of our business is done in Northern Iowa, Wisconsin, Minnesota, the Dakotas and Montana, it is to our interest to propagate only such varieties of trees, shrubs and plants as are best suited to the soil and climatic conditions of these states. In this book we are listing only such varieties as long experience and rigid tests have proven of value and the planter may feel safe in selecting any of them with a very few exceptions, which will be noted in the descriptions. Many new varieties are now being produced at the several agricultural colleges and as fast as they prove of value we begin propagating them.



JOHN CHESNEY
Assistant Propagator



FRANK GREGOR
Supt. Spraying Dept. and
Assistant Propagator



ALBERT GREGOR
Assistant Propagator



FRANK BULVER
Live Stock Supt. and
Asst. Farm Manager



HENRY AMBLER
Assistant Farm Foreman



Orchard Planting

Can Be Made to Pay

Years ago it was considered impossible to raise fruit with any degree of success in the Northwest and fruit raising did not meet with any great amount of favor from the early settlers. There were some of the pioneers, however, who had a vision of more and better things for the Northwest and forged ahead with untiring energy. Many were the failures of these early and ambitious fruit fanciers. They soon learned that varieties which did well in the eastern states, where the air is more moist and the growing season longer, were not suited to this section, where the air is dry, the winters long and severe and the summers hot. Today this has all changed. Extensive experiments by individuals and the state and federal governments have brought out fruits of nearly every kind, except tropical fruits, that are not only hardy and bear well but in many cases the fruit is of a better quality than that grown in other parts. A survey made by the State of Minnesota for the five year period from 1916 to 1920 brought out the fact that orchards that were properly managed and cared for

returned a net return per acre far in excess of what could possibly be expected from the ordinary farm crops. In many of the better orchards under survey during this five year period the gross return averaged from three to five hundred dollars per acre. Fruit trees, like all farm crops, produce well or poorly according to the care they receive.

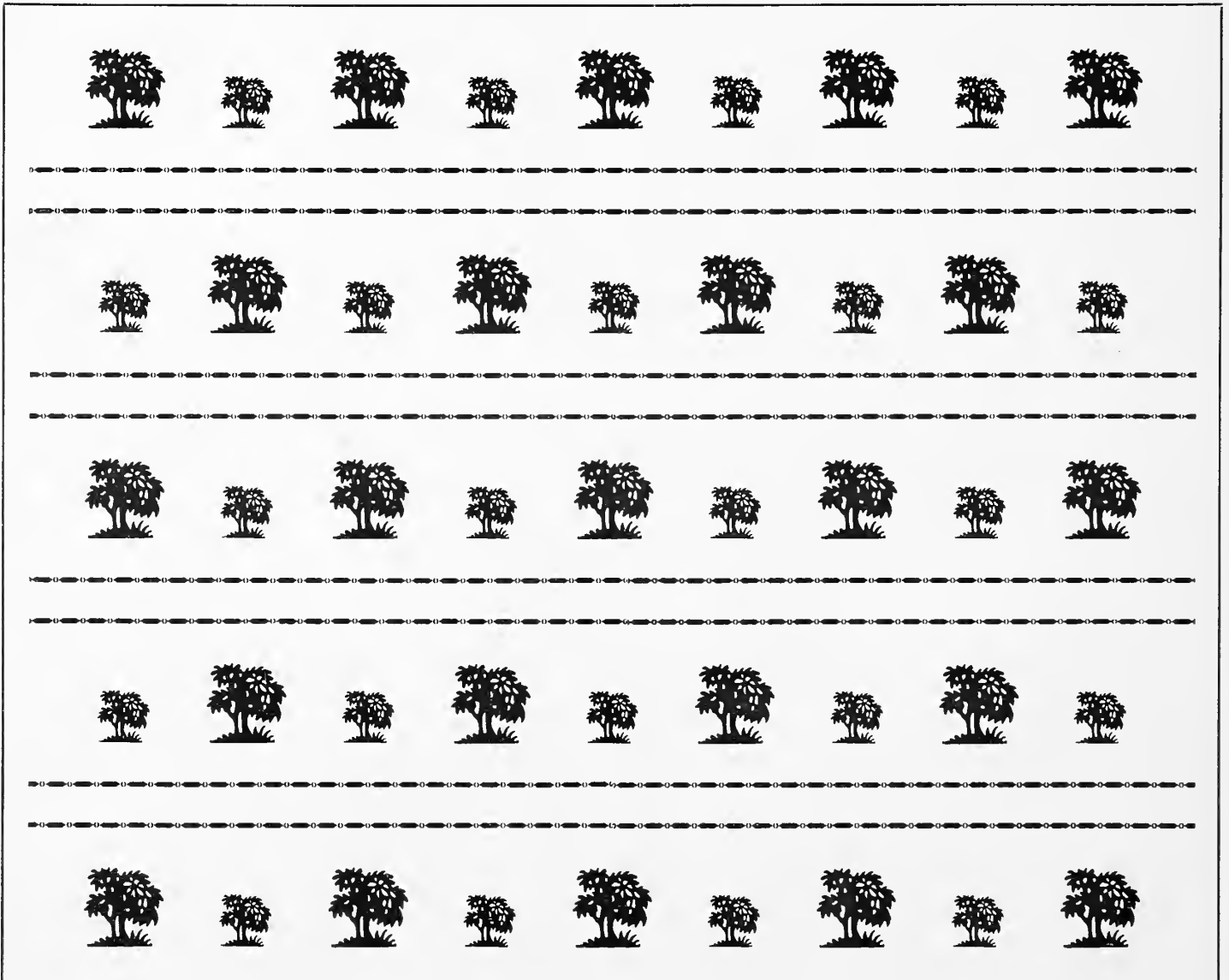
Follow General Instructions

In setting out an orchard the best methods of planting, pruning, spraying and care are fully covered under "General Information" and if carefully read and followed, the efforts of even the beginner will be crowned with success. Do not lose sight of the fact that even though an orchard is properly planted it must have care to bring the best results.

Laying Out an Orchard

The plan given below is very elastic and can be adapted to almost any individual condition. On account of every foot of land being used it will readily recommend itself to the average planter who has a mind to compactness yet ease of cultivation.

ORCHARD PLAN



Large Trees—Permanent Apple and Crab trees planted 35 feet apart in the row and rows 30 feet apart.

Small Trees—Fillers, Plums and Cherries 17½ feet from Apple trees.

Between Rows—Double rows of Small Fruits such as Raspberries, Strawberries, Currants, Gooseberries, etc., between rows of Fruit trees.



After Pruning

Very much has been said about pruning by various authors, judging from these and our own experience and observations, we would say: Looking at the health and vigor of a tree, the best time to prune is just before the sap begins to run, early in the spring.

Summer pruning is done to check rank growth and promote fruitfulness. This should be done very cautiously, if at all, as too much pruning will harm a tree. When we are in a hurry to have a tree bear, we pinch off the bud on the end of the limbs a little in summer. Do not fear to prune the tree when it is young—that is, when it is not growing—and keep pruning as long as it lives.

To Control Blight

It has been recently discovered that blight may be very effectively controlled by cutting out the blighting twigs as fast as they appear. The cut should be made well below the affected parts and the knife should be sterilized by dipping it in a five per cent solution of carbolic acid after cutting off each twig, so that the disease may not be carried from one limb to another. This work must be done as soon as the disease appears, and carried out persistently. It is also important that neighboring orchards be looked after or the disease will be continually carried back and the work prove unavailing. Birds, bees and other insects are the common carriers of the disease. Some varieties hardly ever blight and this should be remembered when selecting your trees.

To Protect the Roots

The roots of many trees, especially the apple are more tender than the tops. In winters of scanty snowfall many trees will come thru with enough life in their trunks and branches to open the buds and put forth a few small leaves, but with their roots so seriously injured or killed outright as to ruin the trees. If we always had plenty of snow evenly on the surface, we would never have to think of the roots. But, in order to make them safe in winters with light snowfall, and in places where the snow blows off leaving bare ground, it is always best to cover the ground with a mulch of any convenient material extending from three to six feet out from the trunk of the tree. This does not have to be very thick as it is a matter of common observation that a small amount of litter will keep out a great deal of frost. Where there is litter of any kind about the trees, there will be danger of mice nesting and girdling them, which can be prevented by the use of galvanized screening or by hilling up around the trunk as shown on Page 8.

Cultivate the Orchard

There always has been and probably always will be a conflict of ideas on this question. There are really good points in both methods. In sod the land will stop washing and wasting in heavy rains, and the roots of the apple will be protected by the grass from severe freezing. But, the trees will be much healthier, make a better growth, and stand drought better in cultivated ground. Where the land is level so that it does not wash badly we advise cultivation, with a good mulch put about each tree in November. Where so rolling as to make cultivation impossible, keep the land in clover, and use all the hay as mulch about the trees. In both cases, protect the trees from mice with wire screening. Do not take a crop of hay from the orchard, or allow a hoof of any kind in it.

To Renew an Old Orchard

There are hundreds of orchards in the country that are not doing their best, that indeed come very near doing their worst, that with a day's work putting them into proper condition to start with, and a few hours each year put into spraying and pruning could be made to produce enough fine fruit for the family and a surplus for the market.

The first thing to do is to cut out the surplus trees. There is no use trying to make apple or plum trees do their best after the branches begin to interlock. When this trouble begins, most people trim out the lower branches that are always the first to touch each other. This is the worst possible policy for it is simply postponing the trouble, and cutting out the most valuable branches of the tree. The second and third sets of branches will soon take their places, and in their turn have to be cut out for the same reason, and so on until there is nothing left of the trees but tufts of branches way up in the air out of reach of spraying machinery, and breaking off with every high wind.

The thing to do is to make a drive on the orchard and cut out every other tree, or every two trees leaving one. There is no more reason for mourning over them than there is over last year's corn stalks that have borne their crops and done their

duty. The next thing to do is to remove all dead branches in the trees that are left, sawing them off clean next to the collar, and painting over the wounds. There will no doubt be quite a good many live branches that are crossing each other and making trouble, and right here you want to go slow. If there are very many, don't cut them all out in one year, and give the tree such a shock as a man would have if all his arms and legs were removed at one time. Better take three years to do this part of the job removing the most necessary third of them the first year. You can do it at any time after the leaves have fallen that suits your convenience, if you will take the trouble to paint over the wounds to keep them from drying, checking and rotting.

Selecting Varieties

In selecting varieties for a new orchard one should not choose too many of the early summer ones which must be used up as soon as ripe or go to waste. In the description of the different fruits we list will be found the length of time they may be expected to keep under favorable conditions.



Apples

If all the fruits grown in the Northwest, the apple and the demand for them is constantly increasing, both for home use and for shipping. No city garden should be without sufficient apple trees to produce fruit for home use and the farm garden can easily be made to bring a handsome return for the amount of labor necessary by planting a few apple trees of the right variety. The following list will be an aid in making a selection.

SUMMER VARIETIES

Duchess, Oldenburg—A large beautiful apple streaked red on yellow, tender and juicy. Fine for cooking, very productive. Ripens early in September.

Erickson—Originated at Atkin, Minnesota, and pronounced by leading Horticulturists as the hardiest variety known to the apple family. Exceedingly large, of splendid flavor, solid bright red color when ripe. A hearty bearer, keeps until December. Recommended for planting where other varieties freeze out.

Yellow Transparent—Medium size, white changing to lemon yellow, smooth waxen surface, of good quality with crisp flesh. Keeps well for an early apple. Ripens in August.

FALL VARIETIES

Folwell—This is a Minnesota product and derives its name from the first president of the University of Minnesota. The tree is hardy, large, and spreading. Very vigorous, and regularly productive. Fruit is large, round, and of a greenish yellow color with heavy blush. Flesh is medium fine grained, firm, tender, and juicy. Keeps until late in the fall.

Hibernal—One of the hardiest apples grown. Fruit large, handsomely striped, fine for cooking and for pies. Perfectly hardy up to the Canadian line. Best for top working to winter sorts. Season September to November.

Okabena—Extremely hardy and free from blight, prolific bearer. Fruit large, strongly resembling the Duchess but keeps much better. Season September and October.

Pattens Greening—Tree extremely hardy. Productive and an early bearer. Fruit large, green when picked changing to yellow. Fair for eating and excellent for cooking. Season September to December.

Anisim—Hardy and remarkably free from blight, fruit small, somewhat rough, but of rich red color, tender and juicy, fine for eating or cooking. Season September to January.

Wolf River—An iron-clad that was originated near Wolf River, Wisconsin. Fruit is extremely large, greenish yellow, turning to crimson on top, tender and juicy. Season September to December.

WINTER VARIETIES

Delicious—Originated in Iowa and is not considered hardy north of the Iowa-Minnesota line. Fruit is round, long, tapering, deep red running to yellow at the tip. Has a delightful flavor and has been kept in cold storage until May. Valuable for home or commercial orchards.

Haralson—Best new keeper, originated at Minnesota Fruit Breeding Farm. An early bearing variety with a tree of moder-

ate size, roundish, well colored with an even red over the entire surface, flesh fine grained, tender, juicy, sub-acid, quality good. Keeps in common storage until early spring.

McIntosh—Tree vigorous with spreading head, a good annual bearer. Fruit above medium size, smooth, yellow covered with crimson, flesh snow white, crisp, very tender, aromatic and sub-acid. Season October to January.

Minnehaha—This apple is the first produced at the Minnesota station to receive a name. It is a beautiful dark red apple somewhat flattened in form, and is at its best in early winter. Medium in size, flesh firm and fine grained, medium, juicy, rich flavor, quality very good. The tree is hardy, vigorous, and productive.

Malinda—An irregular but steady grower of about the same hardiness as the Wealthy. Fruit Medium, green, with blush of red. Flesh hard, good grained, sub-acid, good flavor. Season October to March.

Owatonna—Originated at Owatonna, Minn. A rapid grower, very prolific and hardy as the oak. The fruit is large, dark red in color, flesh tender, crisp and sub-acid. Bears late and is a good keeper.

Northwest Greening—Tree of Wisconsin origin, vigorous and hardy. Fruit large, nearly round, of greenish yellow color, flesh yellow, fine grained and firm, sub-acid, smooth and attractive. Season December to May.

Jonathan—An old standby and favored by many as the best of the winter varieties. It is of medium size, fine flavor and an excellent keeper. Not hardy north of the Iowa line.

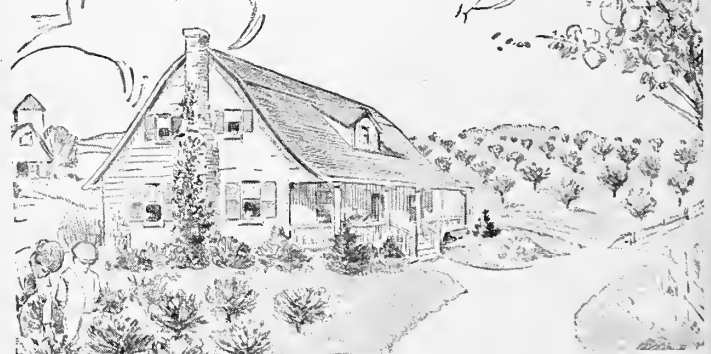
Salome—A hardy tree and consistent bearer. Fruit is large, round, yellowish green striped with red, mildly sub-acid, flesh somewhat coarse in texture. Keeps until mid-winter.

Wealthy—Fruit large, red, regular and of the very best quality. Tree vigorous and thoroughly hardy and bears very young. A good market variety. Season October to February.



Haralson

It's Not a Farm Home—
Without Fruit





The Famous Perkins Seedlings

THERE is perhaps no one man who has contributed more hardy varieties of winter apples to the growers of the Northwest than the late Mr. T. E. Perkins of Red Wing, Minnesota. Back in the spring of 1893 Mr. and Mrs. Perkins decided to plant some seeds from Malinda apples which they had grown in their own orchard and stored through the winter. The seedlings from this sowing were later transplanted into an orchard of about one hundred and fifty trees, being crossed with different hardy Northwest apples. As this orchard came into bearing it soon became famous throughout the Northwest, selections from it sweeping the boards at the state fairs and carrying off the highest premiums at the annual meetings of the Minnesota State Horticultural society. In 1903, ten years after planting the seed, Mr. Perkins made an exhibit at the meeting of the American Pomological Society at Boston and carried off the Wilder Medal in competition with all of North America, and the same year at the Louisiana Purchase World's Fair at St. Louis, he won the gold medal in competition with all comers.

In 1908 Mr. T. E. Cashman, together with another prominent Minnesota nurseryman, visited the orchard and purchased from Mr. Perkins scions and the right to propagate several of the leading varieties. There was one, however, the "Perkins No. 72," which he considered the best of them all, and would not sell at that time, hoping with it to win the \$1,000 prize offered by the State Horticultural society for the best apple for the Northwest. As his health began to fail, however, he abandoned the idea and sold the Perkins to be propagated along with the others. We have selected the following varieties which we consider superior to all other apples for the Northwest.

Bayfield (No. 124)—Tree a rapid grower attaining a large size and is a very profuse bearer. Fruit resembles the Wealthy in size and color, flesh light yellow and of splendid quality. Keeps until May.

Goodhue (No. 121)—A splendid mid-winter apple resembling the Wealthy, but larger and apparently a much more hardy and vigorous tree. Fruit rich red color, delicious flavor and hangs well on the tree until fully ripe. Not much subject to blight. Keeps until February.

Jumbo (No. 81)—Largest apple of all the Perkins seedlings. Fruit about



The Late T. E. Perkins

the size of the Wolf River but of far better quality. Fruit red over yellow, fine grain, mild-acid. Tree vigorous hardy and a prolific bearer. Keeps until January.

Red Wing (No. 59)—One of the best of the original Perkins Seedlings. Has stood sixteen winters in Manitoba, where very few apples survive and has borne fruit each year. Fruit is conical in shape, beautifully striped and splashed with red, hangs tight to the tree until ready to pick. Flesh firm, fine grained and very juicy, quite sour when picked but becomes fine for eating in mid-winter. Tree a spreading grower and not subject to blight. Keeps until May.

Rhoda (No. 54)—A recent but wonderful addition to our "Perkins Family," and when we consider hardiness the Rhoda is by far the best in the Perkins list. Fruit has a distinctive appearance being particularly oblong in shape, medium size, striped to deep red in color. Flesh firm, fine grained and sweet. Tree hardy and does not appear to be subject to blight. Keeps until April.

Perkins (No. 72)—We firmly believe that this apple far surpasses anything that has yet been produced as a winter variety for Southern Minnesota, Southern Wisconsin, Iowa and Nebraska. This apple has been kept under favorable conditions for one year and then exhibited at the Minnesota State Fair. The fruit, which resembles the Baldwin very much, is large, rich red, round as a ball and though very hard at picking time it becomes fine for eating during middle or late winter. It is almost impossible to shake the apples from the tree until thoroughly ripe. The tree is a rapid, robust grower, free from blight and has proven perfectly hardy wherever it has been planted. There should be a place in every orchard for this splendid apple. Keeps well into May or June.



Cultivate your
Fruit Trees
as you would
your corn
and you will be
well repaid.
**DON'T NEGLECT
SPRAYING**

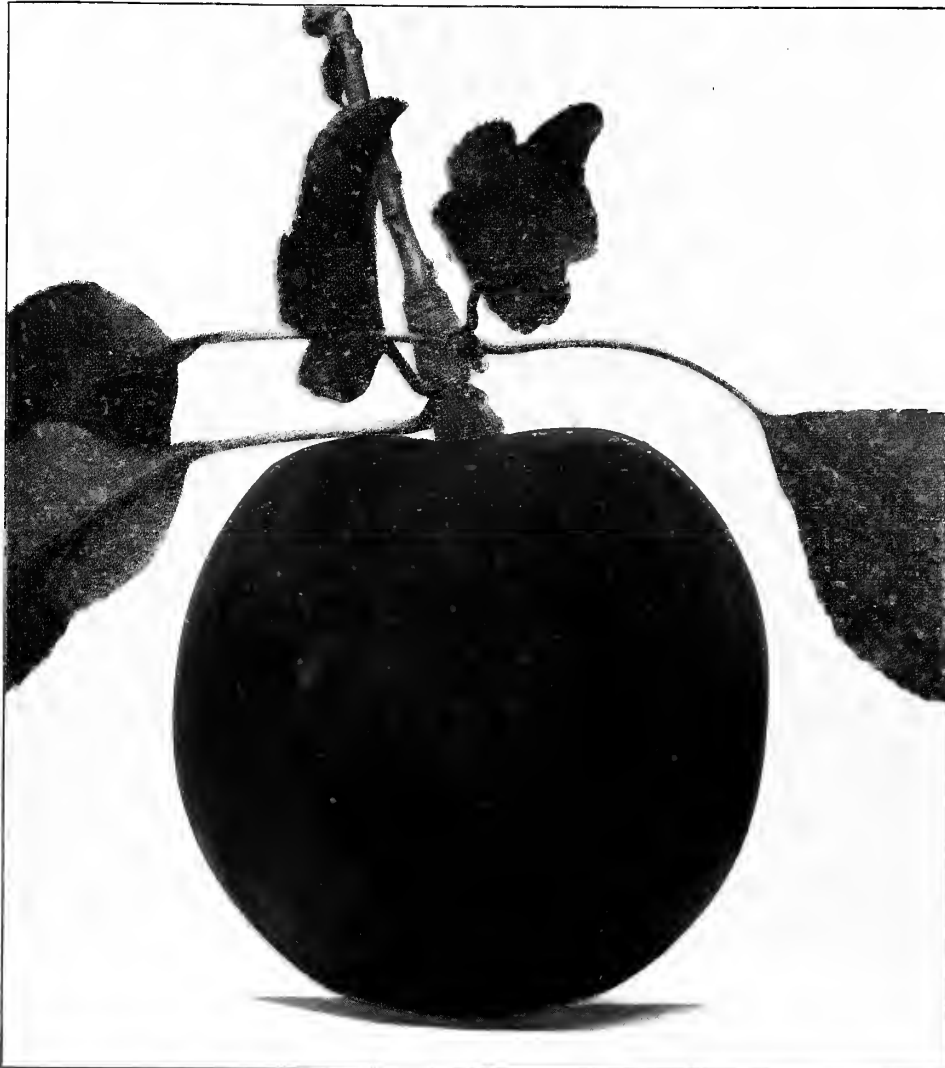


Gold Medal won by Perkins Seedlings at the Louisiana Purchase World's Fair at St. Louis in 1903 in competition with all comers.

Perkins No. 72



Wilder Medal won by Perkins Seedlings at American Pomological Exhibition at Boston in 1903 in competition with all North America.



Rhoda



Wealthy

Crab Apples

Florence—One of the hardiest of all and an early and profuse bearer. Fruit larger and considered by some superior to the Transcendant. August to September.

Hyslop—This variety has been long and extensively cultivated. Trees are hardy and strong, fruit large, deep red when ripe, produced in clusters. Fine for cooking and for cider. September and October.

Dart's Hybrid—Grown from Telofsky seed, supposed to be crossed with the Hyslop Crab. An erect rapid grower, comparatively free from blight and combines the quality of the apple with the hardness of the crab. September to October.

Early Strawberry—Tree very vigorous and productive, flesh juicy, rich, subacid, with an agreeable flavor. August.

Minnesota—A medium grower, hardy, best of the winter varieties for size and keeping qualities. The fruit is large and yellow, splashed with red on sunny side, fine grained, juicy, and of an excellent flavor.

Soulard—A cross between the wild crab and the common apple. Fruit makes excellent preserves and fine for jellies and jams. Tree bears early and makes rapid growth. Ripens late and keeps well.

Transcendant—An old favorite and a beautiful variety of the Siberian Crab. Red and yellow. Quite subject to blight. Not recommended on that account.

Virginia—A fine grower, free from blight. Fruit size of Transcendant, color red. Fine for cooking and for cider. September and October.

Whitney—Very hardy, productive, handsome foliage. A dessert apple of good quality. Color red, flesh juicy, tender and rich. Comes into bearing very early. September.

Yellow Siberian—Fruit medium size. Clear pale yellow. An excellent crab for preserves and pickles. Tree very hardy, healthy, comes into bearing very young. September and October.



Florence



It's Not a Home
Until It's Planted



Plums

THE plum is the natural tree fruit of the North. No farm or village home even in North Dakota and Montana need be without this luscious fruit which is as easily raised in this climate as oranges in Florida or peaches in New Jersey. They begin bearing early, often the next year after planting and continue so abundantly that they bear themselves out in ten to fifteen years. The native plums of this section were small and not always of the best flavor but during the last twenty-five years horticulturists have by experimenting and cross fertilization with Japanese and European plums brought forth new and improved varieties that are equal in size and superior in flavor to the choicest California plums usually found in fruit stores.

When planted alone, or not used as filler in the orchard, plums should be planted about sixteen feet apart. Several varieties should be planted together in order to allow the blossoms to cross pollenate. Trim back to form a head about three feet from the ground and each year cut back the rank growth of the branches before they reach the size of a lead pencil. Suckers that shoot up from the roots should be kept cut away and the ground kept well mulched and cultivated. Spraying should not be neglected and should be thoroughly and effectively done at least twice each year. Should they set fruit too heavy to ripen easily shake off the excess when it is about the size of a wild cherry. This will prevent overtaxing the vitality of the tree and insure a uniform crop each year.



Underwood

Americana Plums

De Sota—Fruit medium size, yellow with red cheek, fine for eating or canning. Fresh, yellow and rich. Moderate growth, bears young and profusely. Hardy and very desirable.

Surprise—A fine native variety considered by many as one of the best of the cultivated varieties. Tree large, healthy grower and of the hardiest type. Fruit large, medium thick tender skin, bright red; flesh pale yellow, mealy, of fine flavor and good quality.

Terry—This plum has also been known as "Free Silver." Fruit round, red, of medium size; flesh yellow, firm and of fine flavor. Perfectly hardy in all sections of the Northwest.

Burwood—A variety of recent origin which promises to become extremely popular among Northwest planters. Supposed to be a cross between the Burbank and Brittlewood. Fruit is very large and of excellent flavor. Meat solid, juicy and with small pit. Tree a rapid grower and perfectly hardy.

Omaha—A new variety, very large, fine for eating or canning. In size, texture and flavor resembles the Burbank. Meets with ready sale on the market. Meat solid, small pit. Tree very hardy and a rapid grower.

Hansen Hybrid Plums

Produced at the South Dakota
Experiment Station

Hanska—A cross between the native plum and the fine fragrant Apricot Plum of China. Tree a strong upright grower and early and full bearer. Fruit large, firm, bright red; flesh yellow and of a delicious apricot flavor. Excellent for eating raw or for cooking.



Monitor



Kaga—A cross between the wild plum and the famous Chinese Apricot plum. The fruit is large, somewhat oblong, dark red in color; flesh firm, fine eating out of the hand and fine for cooking or canning as it retains the apricot flavor.

Kahinta—Cross between the Japanese Apple Plum and the Terry. Fruit 1½ inches in diameter, dark red, roundish, slightly oval, freestone, skin thin, flesh firm, yellow and sweet, and of excellent quality. Pit very small. Bears young and very heavy.

Opata—A cross between the Sand Cherry and the Japanese Gold plum. Tree very hardy, spreading grower and heavy bearer. Fruit a little larger than the wild plum, deep purplish red splashed with green; flesh deep green, firm, and of excellent quality, small pit.

Sapa—A cross between the Sand Cherry and the Japanese Sultan plum. Tree somewhat dwarf, rapid grower. Fruit small dark purplish red splashed with green; flesh and juice of a rich dark purple and of a rich flavor, small pit; excellent for canning and for sauce and pies.

Skuya—A cross between the native De Sota plum and the large Japanese plum, Red June. The tree is a strong and vigorous grower and perfectly hardy. Fruit is of dark red with yellow flesh of fine quality.

Toka—This plum is of the same parentage as the Hanska and is very similar in many respects. The tree is exceedingly erect, strong, stocky, and hardy. Fruit is bright red with blue bloom; flesh yellow, firm, of good quality, rich and fragrant.

Wachampa—A cross of the same parentage as the Sapa. The tree is a stronger grower than the Sapa and the fruit is smaller, about one inch in diameter. It is an early and heavy bearer and the fruit keep well after picking.

Waneta—A cross between the Terry and the Apple Plum, a large Japanese variety. The fruit is large, often reaching two inches in diameter. Fruit of a deep red, yellow flesh and a delicious flavor. Tree is perfectly hardy and a rapid grower.

Minnesota Plums

Produced at the Minnesota Fruit Breeding Farm

Elliot—Tree vigorous, very hardy, spreading growth, slightly drooping; fruit medium to large, round-oval, red; flesh firm, juicy; quality good; stone small, cling; season late, about September first. Promising as a market variety because of its productiveness and regular bearing.

Golden Rod—Originated in 1913, and distributed in 1923. A distinct departure from the usual type of red plum, its color being clear yellow, size large, very attractive. Because of its contrast to other plums, its firmness and good shipping qualities it is a good commercial variety.



One Corner of an Eighty Acre Field of Plum Trees



Sapa

Hennepin—Tree is of medium size, vigorous and regularly productive. Foliage is striking in character being nearly yellow when young and light green at maturity. Fruit is medium in size, of a dark reddish purple with very heavy bloom; flesh is dark red and of fairly good quality. Season early.

La Crescent—The tree is large, extremely vigorous in nursery and orchard. Fruit is medium in size, skin thin, tender, easily removed. No trace of astringency; color, a beautiful clear apricot yellow, sometimes faintly blushed and covered with a delicate bloom; flesh is yellow, juicy, very tender, not fibrous, sweet, aromatic, suggestive of apricots; quality of the highest; pit small and free. Season early.

Loring Prize—This variety was originated near Fari-bault, Minnesota, and succeeded in carrying off the prize offered by the State Horticultural Society for the best Minnesota plum. Tree is thrifty and perfectly hardy. Fruit very large, from 1¾ to 2¼ inches in diameter, nearly freestone, bright red, flesh yellow and of a delicious flavor superior to the California plum. Fine for market purposes. Tree bears when three to four years old.



Monitor—Tree medium in size but vigorous, produces a compact, rounded, well-shaped head, hardy and productive; fruit is large, roundish, well colored, with dark, dull red; flesh firm, moderately juicy, sweet; quality good; stone medium in size, cling; late mid-season. Very promising as a market plum.

Radison—Tree is an upright and spreading grower of moderate height. Fruit is large, rich attractive red, overlaid by medium bloom; flesh firm, rich yellow, medium fine grained, tender, juicy and sweet. Fruit matures well together permitting harvesting at one picking.

Red Wing—Tree is moderately vigorous, upright spreading, quite hardy; fruit very large, firm, yellow overlaid with bright red; flesh moderately juicy, sweet; quality very good; stone medium to large in size, entirely free; mid-season. An excellent variety for home use and an attractive market plum.

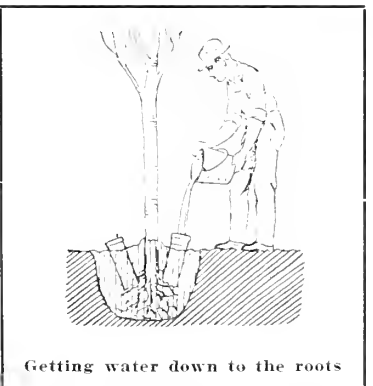
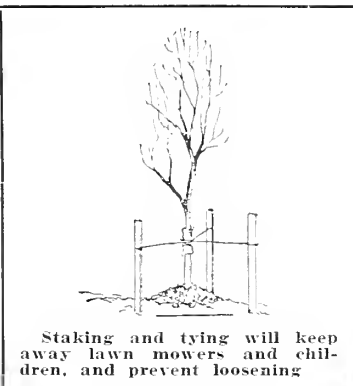
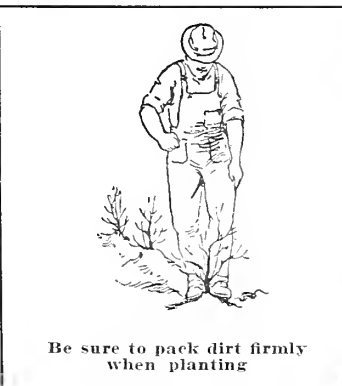
Tonka—Tree of medium size and vigor, of upright spreading growth, hardy; fruit roundish, large, dark red; flesh firm juicy, sweet; quality good; stone very small, free or nearly free at maturity; early mid-season. Especially recommended for the home and market because of Minnesota fruit breeding farm productions.

Underwood—Tree extremely vigorous, large size, of spreading growth, forming a round head, very hardy and very productive; fruit is large, roundish-oval, attractive red in color; flesh juicy, fairly firm, hangs well to the tree, ripens very early and continues over a long season; stone is small, cling; quality excellent.

Winona—Tree very vigorous, spreading to slightly drooping, very hardy and regular bearer; fruit large, yellow with red flesh, roundish; flesh firm, crackling, juicy, sweet; quality of the highest; stone medium in size, semi-cling. The variety is somewhat more subject to brown rot than other of the hybrids.



Kahiuta





Cherries

CHERRIES are being grown more and more throughout the Northwest. While the eastern varieties have not proven very successful in this section, particularly the sweet cherries, there has in the last few years, been considerable advancement in the production of hardy kinds. By cross breeding, horticulturists have brought out some new varieties that are particularly adapted to this section and with fruit of a quality that compares very favorably with the older sorts. Cherries should be given the same care as plums and it is best to keep them trimmed to bush form as much as possible. The varieties we list are hardy and productive anywhere in the Northwest.

Compass Cherry—Originated in Minnesota. A cross between the Rocky Mountain Cherry and the Native Plum, and resembles both. The most remarkable fruit of recent origination. Hardy as any wild plum. Sweet, juicy and excellent flavor. Marvelously prolific bearer. Grows on any soil. Fruits every year—never misses. Bears second year after planting. Good shipper and a fine cooker. This cherry is perfectly hardy in Minnesota, Wisconsin, Iowa, the Dakotas and Montana.

Early Richmond—Everywhere the most popular. Tree strong, thrifty grower, making a large symmetrical head; fruit medium size, dark red and juicy; sprightly acid flavor and especially valuable for cooking purposes; tree an early and abundant bearer.

Nicollet Cherry—The Nicollet is the nearest approach to the true sour cherry, that has been produced in the northwest. The tree is small, bush-like, finely branched, leaves small, one year shoots conspicuously reddish, hardy except in northern portions, fruit is small, roundish, oval. Skin thin, medium tough, color dull cherry red, flesh greenish yellow, tender, juicy, mildly sour, cherry-like in flavor and texture, quality good. Stones small, roundish oval, cherry-like. Season August.

Zumbra Cherry—A low growing tree, vigorous and very productive, showing the characteristic profuse bearing habits of the sand cherry crosses. The fruit reaches one inch in diameter and is borne in thick, rope-like clusters along the slender branches of last year's wood. Color very dark, nearly black when ripe; flesh firm, greenish, sometimes tinged with red when fully matured; stone small, free; quality good with a flavor resembling its sweet cherry parent. This cherry is destined to surpass all other productions for cherry growing in Minnesota, the Dakotas and Wisconsin. One of the most promising of the Minnesota Fruit Breeding Farm productions.



Zumbra



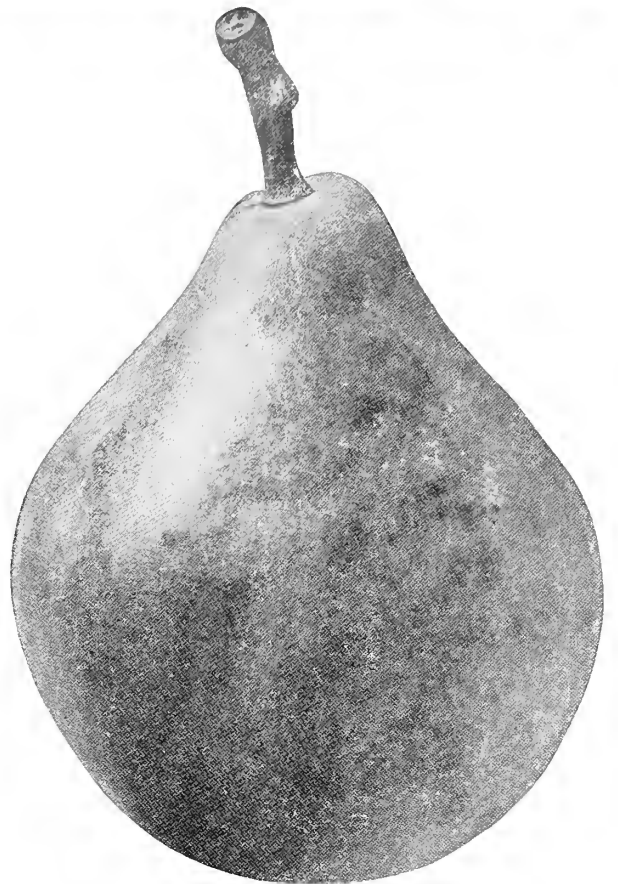
A field of two year apple trees growing in our nursery.

Pears

Mendel—The hardiest pear of good quality yet produced. Blight proof, and disease free, heavy bearing, sweet and very juicy. Originated at New Ulm, Minnesota. The Mendel pear makes possible profitable commercial pear orchards in favorable portions of the northwest.

Minnesota No. 1—Tree is large, vigorous and free growing but not hardy enough for northern location. The fruit is medium to large, roundish, yellow with distinct blush. Flesh tender, medium fine grained, almost melting, juicy, sweet, pleasant, quality very good. Season late September.

Patten—The tree is distinctly upright in habit, with large, healthy foliage. The blossoms are large handsome white. Fruit when well grown, is medium to large size, favors Bartlett in general form, smooth and regular; color green, turning to yellow as it ripens. The skin is quite thick but becomes quite thin and tender as it ripens. The flesh is very tender, juicy, rich sub-acid, refreshing and very good quality. The tree is not considered entirely blight-proof in northern localities. Season, September.



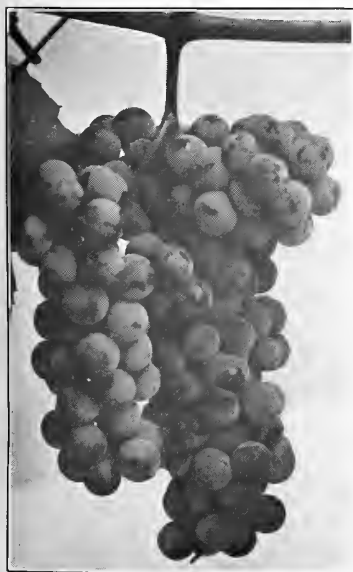
Mendel Pear

Grapes

IT is only recently that grapes have received any particular attention in the Northwest and it is very doubtful if any fruit has made more rapid strides in this section than the grape. Many can remember when the cultivated grape was almost unknown here, likely because of the fact that Eastern grapes could be bought upon the market in their season for from ten to twenty cents a basket, while today the baskets alone cost nearly that amount. Today this is all changed. The Eastern and Western grape has advanced in price until it has almost become a luxury and in its place has been brought fruit of native origin that is equal in every respect to those of former years. They should be planted in good rich soil in a sunny location and cut back to six inches from the ground at planting time. It must be remembered that grapes bear on new wood only and should be cut back about two-thirds of the year's growth after the leaves fall each year. A three wire fence is perhaps the most satisfactory trellis on which to train them, but the posts should not be more than a rod apart in order to furnish sufficient support for the heavy new growth each year. Set plants eight feet apart in the row and rows eight feet apart. Many of the varieties we are listing are the product of the Minnesota Fruit Breeding Farm, where they have been given the most rigid tests.

Agawam—A light red berry of good size. One of the strongest growers with fruit of an excellent quality. Not extremely hardy but survives well with winter covering.

Alpha—A recent production somewhat like the Beta but considered by some to be superior. Fruit a trifle smaller than the Concord and sub-acid. Perfectly hardy in all sections.



Beta

Beta—A northern seedling crossed with the wild grape which has proven entirely hardy in North Dakota without winter covering. Fruit of medium size and of a flavor midway between the Concord and the native wild grape. Ripens early and is seldom affected by late spring frosts.

Concord—An old standard variety and the most popular grape in America. Fruit large, round, sweet and borne in huge clusters. Vines hardy and vigorous.

Dakota—A product of the Minnesota Fruit Breeding Farm that has become well established throughout the Northwest. Fruit large, slightly sub-acid and borne regularly in large clusters. Very hardy.

Delaware—Still holds its own as one of the finest grapes. Fruit light red, medium size, round, thin skin, flesh juicy, exceedingly sweet, spicy and delicious flavor. Should be covered in winter.

Hungarian—A white grape that is very productive with small compact bunches. Fine, sweet flavor. Not quite as hardy as the Beta but does not need winter protection.

Medford Prolific—Originated near Medford, Minnesota, and has proven to be a hardy and valuable variety. Fruit is medium in size, reddish in color, sweet and juicy. Constant and heavy bearer.

Moore's Diamond—One of the best white grapes. Fruit juicy and sweet and ripens early. Vines vigorous and hardy but should be covered in winter.

Moore's Early—Ranks next to the Concord for both home planting and commercial vineyards. Less vigorous and fruitful than the Concord but earlier and somewhat better quality.

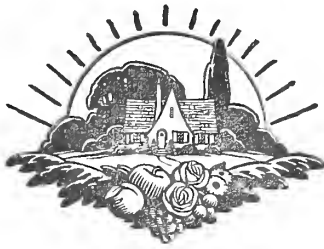
Niagara—The hardiest white grape. Bunches large, berries medium to large. Skin thin but tough and does not crack. Of good quality and has a flavor peculiar to itself.

Suelter—A new Minnesota production, somewhat resembling the Alpha and Beta in size and color. Has proven a wonderful addition to the Northwest varieties. Has a fine flavor and good shipping and keeping qualities. Bears early and very heavy when given proper pruning and care.

Worden—A seedling of the Concord, larger, sweeter than its parent but not so vigorous and prolific. Ripens about ten days ahead of the Concord. Vine as hardy as the old standby and in every way as healthy.



**It's
Not a
Home-**



**Until
It's
Planted**

Gooseberries

THERE is probably no small fruit grown in the gardens of the Northwest that produces so abundantly every year with so little care as the Gooseberry. They do well on any soil that is suited to wheat or potatoes and there is always a good market for the fruit. Cut back same as currants and set from three to four feet apart in the rows and the rows four feet apart to allow for cultivation. Spray thoroughly as soon as the leaves are out and again when the fruit is set (see spray program). Gooseberries, like currants, bear on both old and new wood, but all wood three years old should be kept trimmed out as the fruit of the younger wood is larger. Keep cultivated and mulched during the summer.

Carrie—Of Minnesota origin. Fruit pale red, of good size and excellent quality. Bushes quite free from thorns, very thrifty, and not much subject to rust or mildew.

Champion—An Oregon seedling. Fruit large and of good quality. Very productive. Hardy and well adapted to this section.

Downing—This is perhaps the most popular gooseberry on the market, though not quite as hardy as some. Fruit light green, sweet and fine, large in size.

Houghton—Pale red when fully ripe. Thin skin of the best quality for canning and pies. Bears abundantly and is perfectly hardy anywhere.

Red Jacket—Larger than the Houghton, its parent. Vigorous, productive, red when fully ripe. Fine for preserves and for table use. Entirely hardy.



A Portion of our Printing Department Where Millions of Pieces of Printed Matter are Turned Out Annually

Currants

NO farm or city garden should be without currants. They can be planted along the edge of the garden or between apple and plum trees. They are fine for sauce and pies and make excellent jelly. They need only ordinary care. When planting cut back severely and set them three to four feet apart in the row and the rows four feet apart. Mulch with well rotted manure and spray each year as soon as the leaves are out and again when the fruit is set. After the fruit is picked, cut out all wood that is three years old. This will allow for a greater growth of new wood for the following year.

Perfection—An unusually large red berry borne in good sized bunches. Fine for table use and for marketing.

Cherry—A large red berry in medium sized bunches. Modest grower and does better where it has partial shade.

Fay's Prolific—One of the best known and universally used by large fruit growers. Plants are hardy and productive and fruit is of fine flavor.

Pomona—A choice red currant for both market and home use. Large berries, full bunches of good size, sweet and fine quality.

London Market—Bush vigorous, upright, fruit medium to large, color dark red, sprightly acid flavor, very productive.

Stewart—A fine red currant somewhat resembling the London Market only the fruit is larger and the plants stronger. The quality of the fruit is very good. Perfectly hardy throughout the Northwest.

North Star—Both berry and bunch are very large. Fruit very sweet, rich and firm. Good market currant.

White Transparent—One of the very best white currants. Fruit large, sweet and firm, borne on heavy long clusters. Bushes are prolific and remarkably free from disease. Make excellent pies and sauce.

Wilder—One of the best varieties grown. Superior in every way to the common sorts. Branches and berries large, color red, splendid quality.



White Transparent

WIN MEDALS AT NATIONAL SHOW

Minnesota seedling apples, exhibited at the recent meeting of the American Pomological Society at Louisville, Kentucky, in December, 1927, won a silver medal for the fruit of Minnesota, and the Latham raspberry, another product of the same farm, won a similar medal.

The exhibits were made by W. H. Alderman, chief of the division of horticulture of the Minnesota agricultural experiment station. The apple exhibit included 35 specimens.

The medals, says Professor Alderman, are the highest awards in America for new fruit varieties of outstanding merit, for collection of seedlings, and for achievements in fruit breeding. They are bestowed after careful investigation by the American society and are made available by an endowment fund left by the late Marshall P. Wilder, who was widely known in the horticultural world.



Raspberries

THE Raspberry is one of the best small fruits for the Northwest and can be grown almost anywhere without any great amount of care. It is one of the most palatable of all fruits with practically no waste or extra work in canning, and produces good crops every year. There is always a good demand for Raspberries and the prices are always high. Plant either in rows six feet apart and three feet apart in the row or in hills four to five feet apart. Care should be taken not to plant too deep; cover the bud and roots with about one inch of dirt. Cut the canes down to about six inches at planting time and as the new shoots come up pinch the tops when about two feet high to make them stalky. Raspberries bear on new wood and after picking time all old canes should be cut out. Cultivate only enough to keep the weeds down and only shallow as the roots grow near the surface and are easily injured. Mulching with well rotted manure always pays. Spray just before buds open with lime sulphur or Bordeaux Mixture. All red raspberries sprout from the root.

RED RASPBERRIES

Cuthbert—Fruit large, bright red. Hardy but needs winter protection. Fine for market and home use.

Golden Queen—A beautiful large golden yellow berry surpassing Cuthbert in size, beauty, quality and adaptability. This variety is not only one of the most delicious to the taste, but makes an enticing appearance when served fresh, either alone or in mixture with other colors of berries. Canes hardy, of strongest growth, productive.

King—A good standard variety that has given universal satisfaction. Berry is large, firm, bright red and a good market sort.

Latham—The plants are hardy, unusually vigorous and productive, strong plant producers; canes robust, tall, nearly thornless, reddish with heavy bloom. The fruit is large, frequently an inch in diameter, berries frequently double in early pickings, broad, roundish; color bright attractive red; very firm, medium juicy, medium sweet, quality good to very good. Season medium to late, fruits ripen over a long period. Latham is the name given to the raspberry that was originally known as Minn. No. 4. It has also been officially determined by the highest horticultural authorities both of Minnesota and the U. S. Dept. of Agriculture at Washington, D. C., that the Redpath raspberry is in reality disease free Latham, consequently the name Redpath has been dropped from the lists.

Ohta—Is very hardy and productive. Fruit a beautiful red, fairly firm, of good quality. The canes have red tinted leaves at the tips. The berries run about sixteen to the ounce with only fair cultivation being fifty per cent larger than the Sunbeam and has found favor even far south into Missouri.

Sunbeam—This has proven perfectly hardy without winter

protection. Fruit large and of good quality. Fine for canning.

PURPLE CAP RASPBERRIES

Cumberland—Berries large and even in size, bears abundantly and ripens mid-season. Strong grower and one of the hardiest.

Columbian—Plant a giant in growth, very hardy. Fruit large, dark red, rich juicy and delicious flavor, does not drop from bush. Does not sprout from roots.

BLACK RASPBERRIES

Older—One of the lately introduced varieties which has been receiving considerable attention in the Northwest. Ripens a trifle earlier than the Gregg. Hardy and reliable. Does not sprout from roots.

Kansas—One of the best black caps. Large, round, firm, moderately juicy, strong grower and very productive; ripens early; considered one of the best market berries on account of handsome appearance.

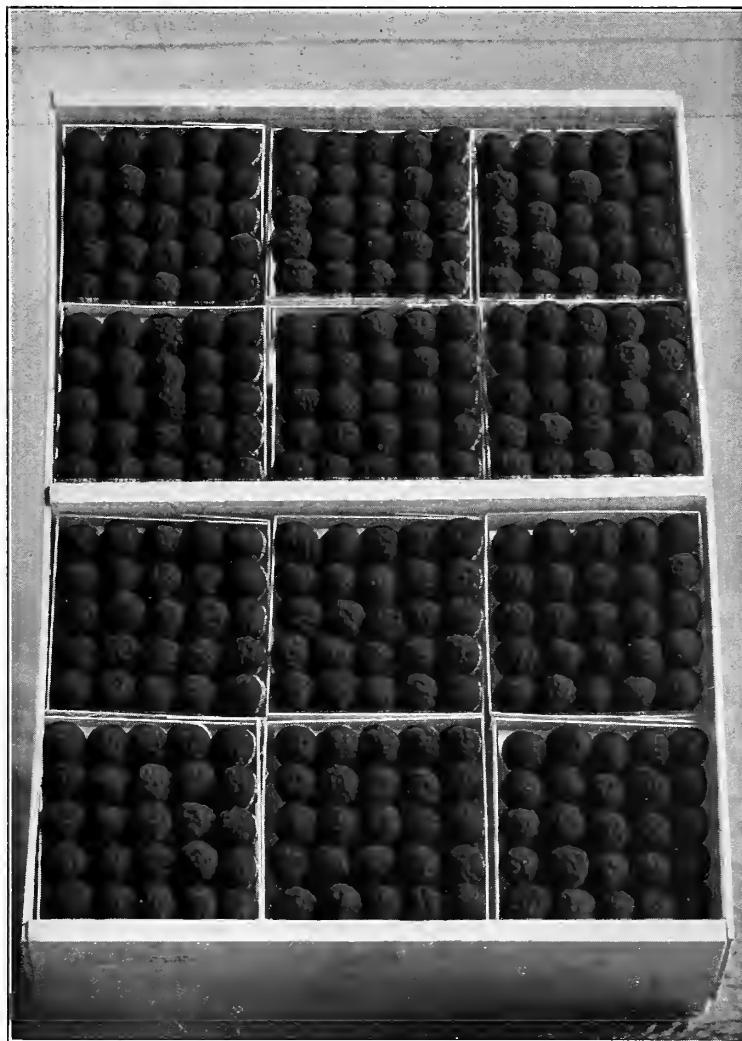
BLACKBERRIES

Blackberries are a wonderful fruit and help to fill the gap between raspberries and grapes. They are easy to grow, requiring about the same culture and care as Raspberries and succeed on most any well drained soil. All Blackberries sprout from the roots. Fruit is large, firm and fine for canning and pies. Blackberries should be covered in winter. Remove a spadeful of earth from the side of the plant, bend at the root and cover the entire plant with about two inches of dirt.

Ancient Britton—A remarkable market variety of medium size and best quality. Very hardy and berries sweet.

Snyder—Medium size without hard, sour core. Not as thorny as other varieties. Extremely hardy and very productive. Ripens in good season.

Lucretia Dewberry—A specie of the Blackberry that has proven successful. Fruit large, very showy, often measuring from one to one and a half inches in length. Very easy to cover on account of its trailing habit.



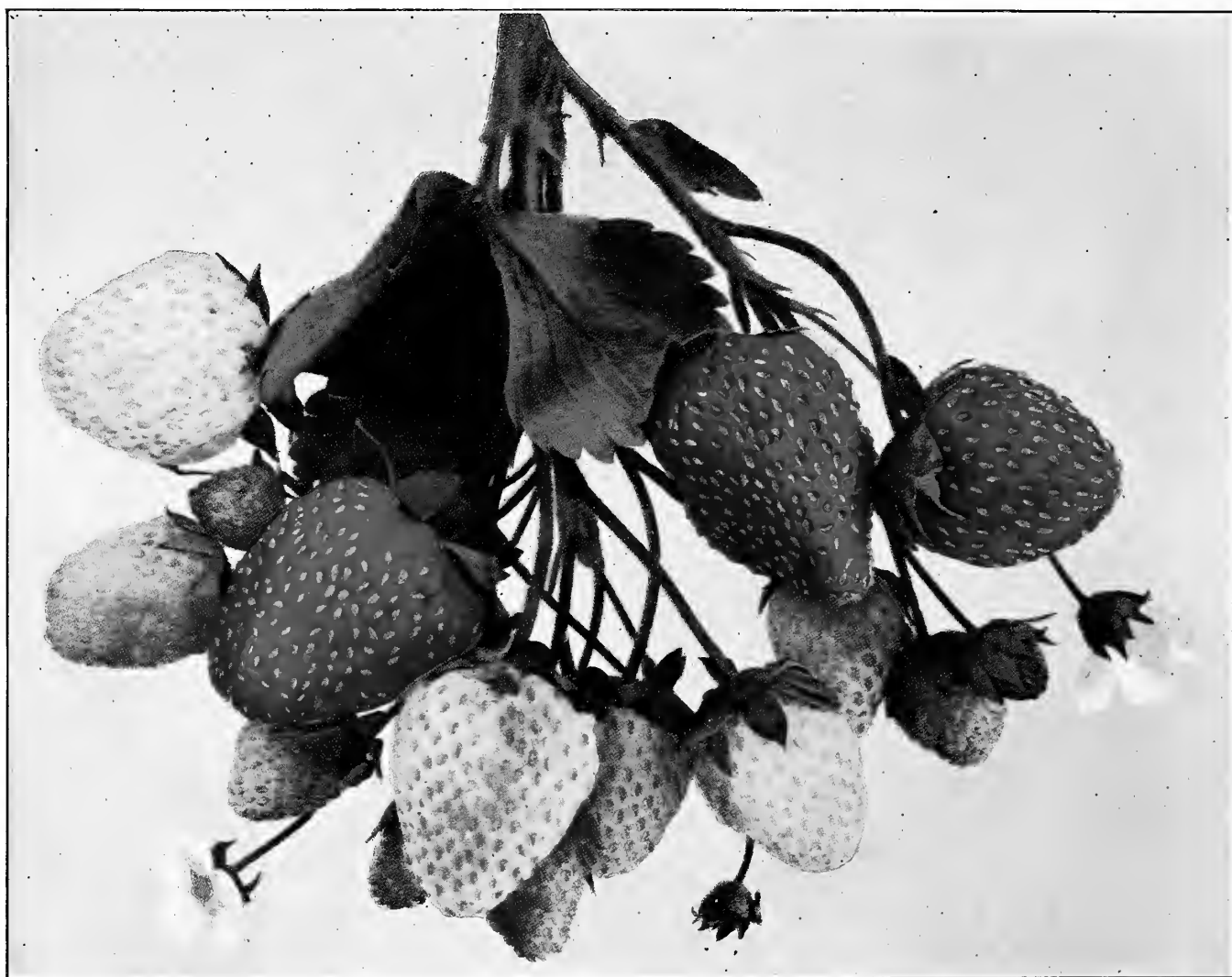
Latham



Have the soil finely pulverized before planting



Strawberries



Mastodon

EVERYBODY likes strawberries and there is no reason why anyone with even a small city lot cannot have an abundant supply for the table throughout the summer season. There is no fruit that produces so well for the small amount of ground required and the little care necessary. As a commercial enterprise they are also very profitable as there is never enough strawberries on the market to supply the demand and the price is always good. An acre of strawberries can easily be made to produce a net profit of five hundred dollars after it comes into full bearing. Strawberries succeed well in any soil that is adapted to ordinary farm or garden crops. Soil should be thoroughly prepared, well drained and enriched. For field culture set the rows three and one-half to four feet apart and fifteen to eighteen inches apart in the row. For garden the rows may be set closer. To produce fine berries do not allow the rows to become too heavily matted. Pinch off the runners as soon as they get out about a foot from the row, leaving plenty of room for cultivation and mulch. After the ground is frozen in the fall cover the plants with two or three inches of clean straw and this mulch should be raked off and left between the rows early in the spring. Care should be taken not to plant strawberries too deep nor too shallow, but so that the bud at the base of the leaves will be even with the surface of the soil. June bearing varieties should not be allowed to fruit the first year but with the Everbearing varieties if the blossoms are kept pinched off until the first of August they may be allowed to bear a crop in the fall. Some varieties have imperfect blossoms and will not bear unless at least every third row is planted with a

perfect variety so that they will pollenate. The varieties we list are all perfect and may be planted alone with success.

JUNE BEARING VARIETIES

Beaver—This variety was originated by C. H. Beaver, Eau Claire, Wisconsin, and is a cross of Dr. Burrill and Premier. Is a perfect blossom plant, with dark green foliage, very strong and vigorous, good runner maker and drought resister. The berries are large and of a deep glossy red which extends over the entire berry to the heart of the fruit. Is very productive, hardy and frost resistant in both bud and blossom. The fruit is very firm and of such texture that it does not require picking more than twice a week.

Minnehaha—Plants are very vigorous, hardy, and productive. form freely, but do not overcrowd in a row. Flowers are large, perfect, borne on stout, upright stems that hold the heavy fruits free from the ground. The fruit is very large, inclined to be wedge shaped, color medium red, seeds raised, yellow, appearance attractive, flesh very firm, light red to whitish, fine grained, juicy, somewhat tart. Quality good. Season late.

Premier—One of the most productive and best well tested early varieties. Fruit highly colored, firm, a splendid shipper, of superb quality. Strong, clean foliage, plant grows and spreads over its loads of fruit, protecting it from sunscald and rot.



Senator Dunlap—An old standard variety that has been the leader for many years. Rampant runner, should be restricted in production of plants. Fruit good size, regular form, beautiful bright red, glossy firm, splendid keeper and shipper, excellent quality. One of the best for canning.

FALL OR EVERBEARING VARIETIES

Champion—A wonderful new variety claimed by many to be superior to the Progressive. In Michigan, where they were originated, they have been planted extensively with entire success. A heavy producer and good plant maker. Fruit is of excellent quality.

Duluth—Entirely hardy in central and northern Minnesota and in Canada, a fair plant maker and produces heavily both spring and fall when grown in the hill system. Foliage heavy, leaves medium size, dark green, covering and partially protecting the blossoms. Flowers perfect and medium in size, conical, dark red, with seeds slightly raised and red when fully ripe; flesh red, moderately juicy, fairly firm, slightly sub-acid; aromatic; of good quality. Spring crop late.

Mastodon—There is no question but what the Mastodon is the largest berry ever produced, and they are just as highly flavored and sweet as they are big. This variety was introduced in Indiana but a few years ago and in a very short time, has thoroughly proven its superiority over all other varieties. Ripe berries may be picked in about three months after plants are set, and they continue bearing wonderful large juicy fruit until freezing time. The second year they bear a crop in June and July and after a six weeks rest, commence bearing

again and continue until winter sets in. The fruit is very firm and can be shipped to market without becoming soft and unsalable. No home garden should be without a quantity of these wonderful strawberries.

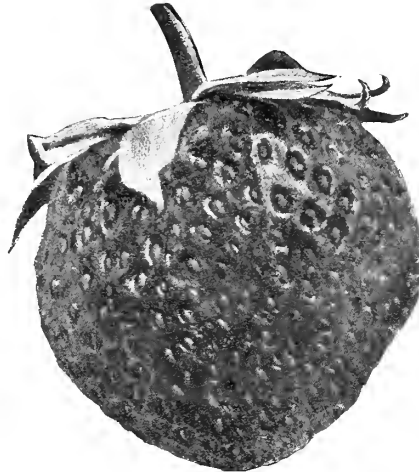
Progressive—The standard by which all everbearing sorts are measured. Healthy, vigorous and productive. Stands hot and dry weather better than most sorts. Fruit deep red, medium size. Very high quality.

Miscellaneous

Asparagus—Can be planted either in spring or fall. Dig a narrow trench at least ten inches deep and fill the bottom with three inches of well rotted manure. Cover this with two inches of black soil in which plant the Asparagus. Cover with two more inches of dirt and leave balance of trench open until the plants grow out. Set plants one foot apart and rows two to three feet apart. Give a good top dressing of manure in fall, working it in between the rows in spring. Liberal applications of salt are also beneficial. We grow **Washington Rust Proof** and **Conover's Colossal**, which we consider the best.

Horse Radish—Too well known to need description. Grows anywhere. We offer strong roots which should be planted in the spring.

Rhubarb—Easiest culture. Just what we need in spring for pies and sauce to thin our blood. A great medicine. We grow two kinds, **Victoria**, with tall, coarse, pink colored stems, and **Linneaus**, called wine plant, with smaller stalks, more tender and very fine quality. Both entirely hardy.



Senator Dunlap

ored stems, and **Linneaus**, called wine plant, with smaller stalks, more tender and very fine quality. Both entirely hardy.

October 20, 1927

Clinton Falls Nursery Co.
Dear Sirs:

I must state to you that the trees I got from you and the service has astonished me. They were much better than I expected, the compass and the Zumbra cherries were white with blossoms the first year. Some of the strawberries were full with fruit till snow fell the first year. I wish I could send you some so you could see—size of a walnut, and on high, dry land. The black raspberry and dewberry

have spread remarkably. I hope I can send you a camera picture as that would talk for itself. I will try and get one—it sure was a joy \$500 won't buy that little orchard from me. If this is of service to you or will help to convince someone who thinks Western North Dakota is too dry, show them this or send them down. I will get a photo that will talk plainer. The Gooseberries are also excellent.

With thanks for what I got from you.

EMIL GLIETZ,
Golden Valley, North Dakota.



Picking strawberries in a field that brought a gross return of over \$400.00 per acre in a single season.



Landscape Gardening

IN planting around your home grounds it is always best, where possible, to secure the services of an experienced landscape architect to view the premises and draw a definite plan for the entire grounds. He will not only be able to save you money but is equipped with a knowledge of colors and arrangements that will make the finished design a thing of beauty and everlasting service. It is not necessary to do all the planting at one time but the plan should be your first consideration and should be adhered to throughout. We maintain a landscape service department which will gladly aid you in every way and will draw plans if you will furnish us with a complete drawing of your grounds, showing location of buildings, walks, driveways and trees and shrubbery already planted. This service is entirely free where we furnish the stock for the planting and our customers are invited to avail themselves of it at any time. In case you wish to make a plan to suit your own ideas the following suggestions will prove of value, but above all, make your plan first.

Houses and other buildings are not natural to the earth's surface and do not appear happy and at ease unless they have what the landscape architect calls a "setting." No matter how fine the material or how beautiful the lines of the house may be, it is not pleasing to look upon unless it appears as part of the landscape.

The buildings and grounds should be a picture, the house, of course, should be the central figure but the surroundings should all lead up to it and harmonize with it. A house properly "set" looks homelike and comfortable.

Trees not only furnish a background for the shrubs and flowers, but they make a boundary for the sky. It is desirable to have a large sky space and this space should be as informal in shape as the clouds themselves. Trees should be chosen with regard to the size of the garden. For a small garden only shrubs should be used as a boundary or perhaps one tree or group of trees on the north side. For a large garden, trees may sometimes be used on all sides, as there will be plenty of space for sunshine anyway. The outline may be varied by using groups of various kinds of trees, so that it may be irregular and produce a most pleasing effect. The border of woody growth, varying from low shrubs to high trees, furnishes a frame or setting for flowers, shielding the shade-loving ferns and other shade-loving flowers from the sun in one place giving the flowers the advantage of his rays in another, and protecting the whole from the sweep of the wind. Remember, the desired effects cannot be realized in one or two years.

A look at Nature will reveal the fact that there is always a greater or less amount of shrubbery to be found in any grove where Nature has not been restricted. It is generally conceded that a lawn or park is not quite complete without a certain amount of shrubbery and perennials being planted. By careful study of the surroundings of a place, certain features may be more effectively brought into prominence, unsightly objects screened and a greater amount of comfort and coziness secured by a judicious arrangement and planting of shrubs and perennials.

There can be no general plan laid down for all places, each place being a law unto itself.

The first thing to be done is to study well the plot of ground under consideration; its slope, the relation it has to the surroundings, the kind of soil, the temperature and the buildings upon it.

Next study well the kind of plants desired, and, of these, select those that are best adapted to the conditions where they are to grow.

Avoid isolated specimens. A better effect will be obtained by grouping them and planting the tall varieties in the background, using the lower and dwarf varieties in the front. Do not plant shrubs in straight lines. It is well in outlining the border to have deep bays which will give a greater distance and also carry with them the idea of a mysterious passage to something beyond.

Shrubs may be used as a screen to hide unsightly objects. A

barrier of living green makes any unpleasant object practically non-existent whether the space be large or small. If privacy is desired the shrubbery border may be so arranged as to almost completely exclude the outside world and yet allow views which will add a great charm to the grounds.

One of the most important points to be kept in mind is to harmonize the buildings with the shrubbery and trees. The object desired in home grounds is to give the house and other buildings, which are not natural to the ground, a perfectly comfortable setting, so they will look cozy and homelike. This requires a careful planting of shrubs and vines around the walls of the house, so that it will have something tying it to the ground, as it were. Here, again, beware of shutting yourself in, while shutting out the public. The planting along the side of the house effectively breaks the line between the house and ground. Here, as in the

border, avoid straight lines. Do not plant the tall growing plants in front of the windows. If planting for winter effect as well as summer, there are many forms of evergreens, especially the dwarf varieties that can be used in the beds in front of the walls. All shapes and sizes may be had to suit the style of architecture.

The varieties of shrubs are so many that the amateur may well be puzzled when it comes to selecting what is needed. A succession of bloom may be had for about seven months of the year, while during the other five months the red, yellow and green twigs of some shrubs and bright berries of others will tend to liven the dreary landscape.

The commonest mistake of all is to have too great a variety of shrubs on a small lawn. It is far more effective to have a clump or mass of one kind of bloom than to have single specimens.

Another mistake that is frequently made is to use too many plants with highly colored leaves, such as Purple Leaved Plum, variegated or Golden Leaved Elder, etc., or too many weeping trees.

February 9, 1929.

Clinton Falls Nursery Company
Owatonna, Minn.

Dear Sirs:

Last year I ordered one dozen Latham red raspberries. Will say that was the first time in my life I ever got anything from a nursery was just as good as the agent said it was. Would like about three dozen more of the Latham plants for this season plantings.

C. H. KIMBERLEY, Collins, Iowa.



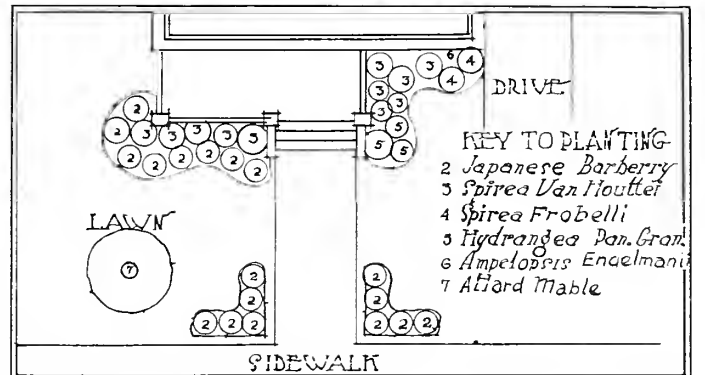
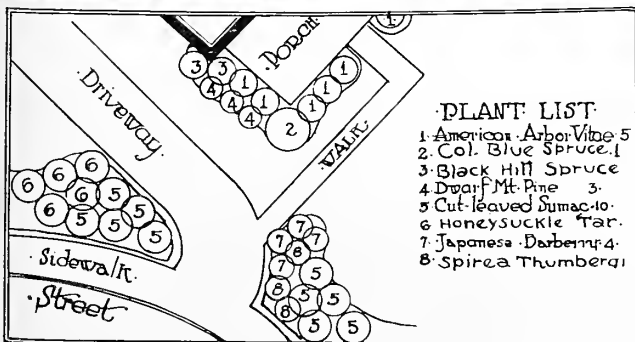
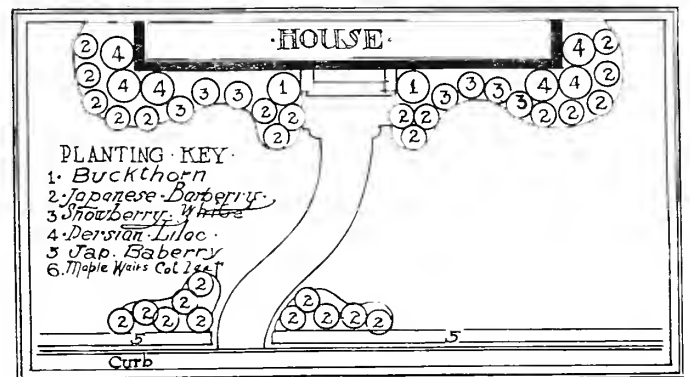
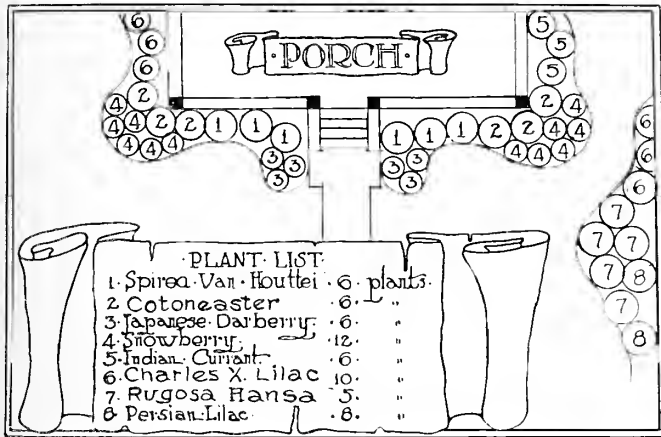
T. E. CASHMAN, JR.
Superintendent Landscape Dept.

Plan—
before you
Plant



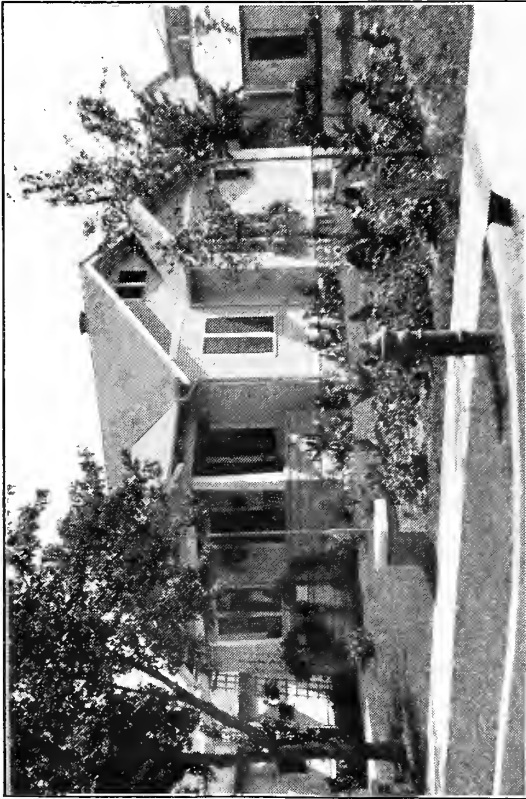


Modest Plans and Planting Keys Easily Adapted to the Small Home

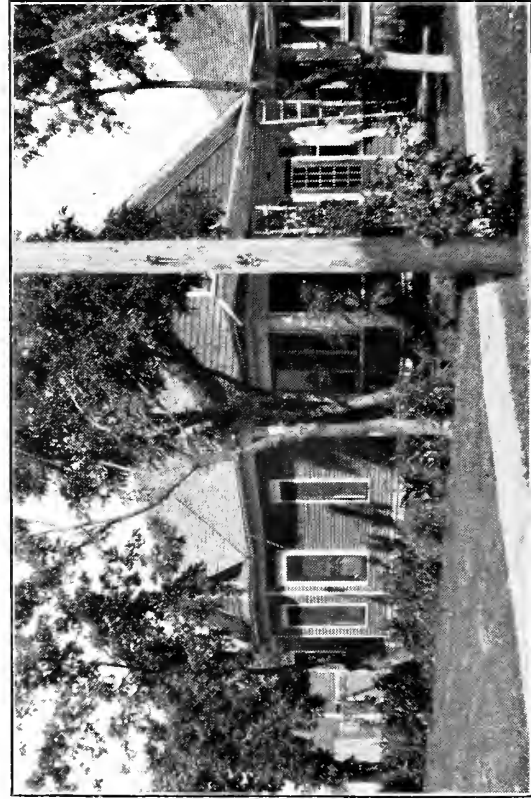




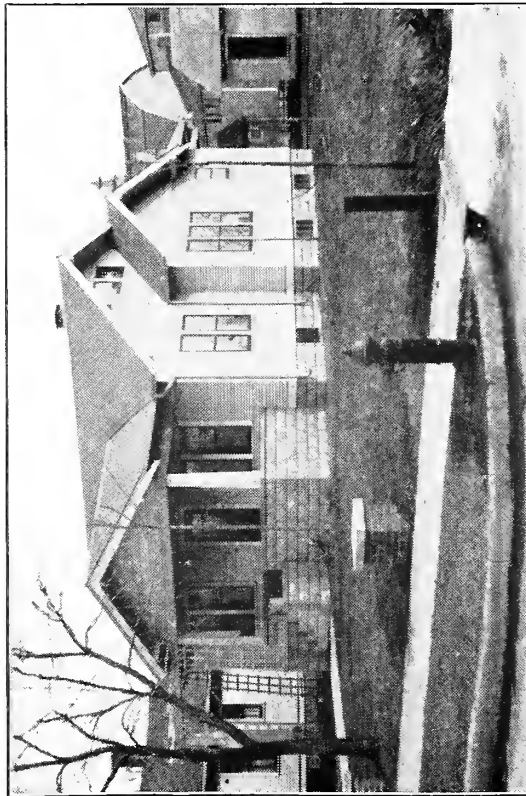
Which Would *YOU* Choose?



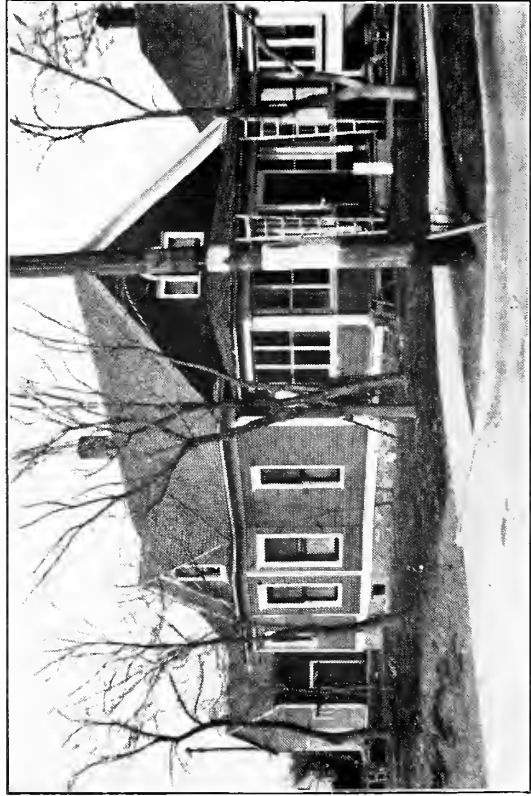
Six Months Later



Six Months Later



Before Planting



Before Planting

The outlay in both the plantings pictured above was very small. What is the increase in value?



Hardy Perennials

ONE of the essentials in securing a bright and lovely garden or border is color, and to get this you need perennials. Most of the shrub planting is to secure foliage, the quiet green against the house foundation or along the border lines. In order to secure a succession of color from spring until fall liberal use should be made of perennials. Their range of height, foliage, color and time of blooming is so varied that they are really indispensable. The perennial is a plant with a hardy root system which lives in the ground from year to year while the top dies back in the late fall. They thrive best in moderately rich soil not too wet. It is well to cultivate deep in the preparation of the ground so that the root growth will extend far below the surface and eliminate the need of watering. After the ground has frozen a few inches they should be mulched with leaves, straw, coarse manure or clean litter of any kind and this should be left on for a time in the spring to prevent freezing and thawing, which is very injurious to the young shoots. After the danger of frost has passed it can be raked from the plant and worked into the soil or left on top as a mulch to conserve the moisture. In selecting perennials care should be exercised to provide, not only a liberal contrast in the color scheme, but also a succession of bloom from spring until fall. The following list covers a range sufficient for all purposes.

Achillea, Millefolium—Rosy pink flowers in dense heads on stems eighteen inches high. Effective on edge of shrubbery or in border. July to October.

Achillea, The Pearl—Pure white double flowers borne freely in clusters. Very effective to soften conflicting notes in the color scheme. 15 to 24 inches. All summer.

Anchusa, Dropmore—Tall spikes of beautiful purple flowers, flowering all summer. Rough broad foliage. 4 to 5 feet. June to September.

Aurundinaria, Variegated Grass—Beautiful for inside borders. Striped flag-like leaves of white and green. 18 inches.

Baby's Breath, Gypsophilla—Dense spreading symmetrical foliage covered with minute white flowers having a beautiful gauze-like appearance. 2 to 3 feet. July and August.



Shasta Daisy

Baptisia, Australis—The attractive blue pea-shaped flowers are borne in short spikes. Will stand partial shade. 2 to 3 feet. May and June.

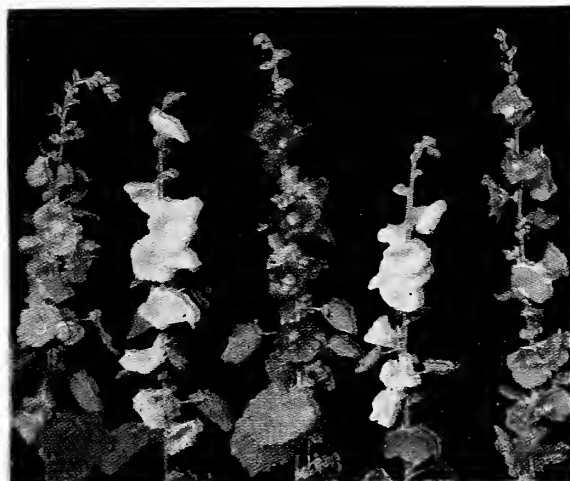
Bleeding Heart—Have long racemes of pink flowers which are always attractive. Come up early in the spring and flowers immediately. 2 feet. May to July.

Canterbury Bell, Campanula—An old favorite with beautiful bell flowers in pinnacles, blue to white. Protect heavily in winter. 18 to 24 inches. June and July.

Chinese Lantern Plant—A unique and very interesting novel-

ty. Grown for the highly colored bladder-like fruits, or seed pods which cover the bush in late summer and autumn. These fruits average about 2 inches in diameter and are a brilliant orange-red when ripe, and because of their shape and texture, the bush is properly called "Chinese Lantern Plant." The branches when dried, make beautiful winter decorations, retaining their brilliant color a long time.

Columbine, Coerulea—They come in assorted colors of blues, whites, yellows, pinks and rose. Grow in almost any soil but prefer well drained sandy loam. 12 inches. April to July.



Hollyhocks

Coreopsis, Lancolata—An improved variety with large bright yellow flowers, one of the best hardy plants. Fine for cut flowers. 20 inches. June to October.

Dianthus Plumarius—The hardy pinks have a spicy fragrance without which the garden is incomplete. Their perfect form and rich coloring make them great favorites for summer bouquets. 10 inches. June.

Echinacea—A very hardy plant, coarse foliage of dark green Rose colored petals with dark colored cone in center. 3 feet. June and July.

Flax Perennial—A new perennial resembling somewhat the field flax when in bloom. Blossoms of a light blue which can be increased by clipping the heads as the flowers die. 15 inches. May to October.

Fox Glove, Digitalis—A biennial which under proper conditions will seed itself. Very attractive in the border. Sold only in assorted colors but are mixed from the best plants. 2 to 3 feet. June to July.

Giant Daisy, Pyrethrum—A hardy tall growing plant throwing out long stems which bear clusters of pure white flowers with yellow centers. Blooms late in the summer and continues until frost.

Gaillardia, Grandiflora—The flowers are of gorgeous coloring. The center is of dark red-brown, while the petals are marked with brilliant crimson, orange and vermillion and often a combination of all in one flower. 15 inches. All summer.

Golden Glow, Rudbeckia—Has wide and striking range of foliage and an abundance of double yellow-golden flowers, shaped like a cactus dahlia. 5 to 6 feet. July and August.

Helenium, Dutumn—Late bloomer. Flowers of a rich deep cream, foliage dark green. Similar to the Riverton Gem except in color. 2 to 3 feet.

Helenium, Riverton Gem—Bloom in late summer and fall when plants, about two feet high, are covered with old gold flowers suffused with bright terra-cotta changing to red.



Hibiscus, Mallow Marvels—A robust type of upright habit, producing an abundance of flowers of enormous size in all the richest shades of crimson, pink and white mixed colors. 4 to 5 feet. August and September.

Hollyhocks—These stately majestic plants are as old as the country, but the double sorts are not so well known. We have them in double pink, double white, double cream, also assorted colors in both double and single. 6 to 8 feet. June to September.

Larkspur, Delphinium Belladonna—Most continuous bloomers of all Larkspurs, with delicate, clear turquoise blue flowers. 18 inches. June and July.

Larkspur, Chinese—A dwarf variety with fine feathery foliage and deep gentian blue flowers. 2 feet. July and August.

Larkspur, Chinese Album—A form of the above with pure white flowers. 2 feet. July and August.

GAILLARDIA, Splendens—Remarkable for its daisy-like bloom and richness of shade. When properly cultivated produces wonderful effects of blood-crimson and golden yellow. 15 inches. All summer.

Perennial Sweet Pea, Lathyrus—An exceedingly hardy and interesting plant adapted for wild tangles and rookery work—never in the border. The flowers are clustered, of assorted colors, very odorous and borne profusely. Fine for a trellis or fence. June to September.

Hardy Narcissus—A beautiful perennial of strong growth, dark green foliage. Flowers profusely of a rich white color. 15 inches. May.

Lily-of-the-Valley, Majalis—The daintiest and most lovable of all garden herbs. Flowers pure waxy white and in graceful drooping racemes. 6 inches. May.

Monarda, Didgma—Second only to the Cardinal Flower in the intensity of its crimson flowers. Rather coarse and aromatic. Most effective at a distance. 20 to 30 inches. June to August.

Physostegia, Virginianna—Used for border with striking effect. Flowers one inch long in white, rose and purple. 2 to 3 feet. July and August.

Physalis, Franchette—An ornamental variety of the Winter Cherry, forming dense bushes about two feet high, producing freely its bright orange-scarlet lantern-like fruits, which when cut will last all winter.

Platycodon, Grandiflora—Old-fashioned flowers of the garden, very regular in growth and habit. Large showy deep blue flowers. 18 inches. June to October.

Platycodon, Grandiflora Alba—Same as the Grandiflora except that it has white flowers.

Poppy, Orientalis—Enormous fiery red flowers six to eight inches across with a satiny crimped texture and peculiar hairy stems. Effective for use with shrubbery. 2 to 3 feet. May to July.

Pyrethrum, Hybrid Single—Flowers are variegated and are borne on long stems, most convenient for decoration. May and June.

Sedum, Spectabilis—One of the prettiest erect growing species, attaining a height of eighteen inches, with broad, light green foliage and immense heads of showy rose colored flowers. August to October.

Shasta Daisy, Medium—A practical creation of Luther Burbank that is deserving of greater use. Flowers of pure glistening white, adapts itself to any soil or location. Excellent for cut flowers. 18 inches. June to September.

Spirea, Filipendula—Low tufted plant with double white flowers and fern-like foliage. Hardy and thrive in any soil. 12 to 18 inches. June and July.

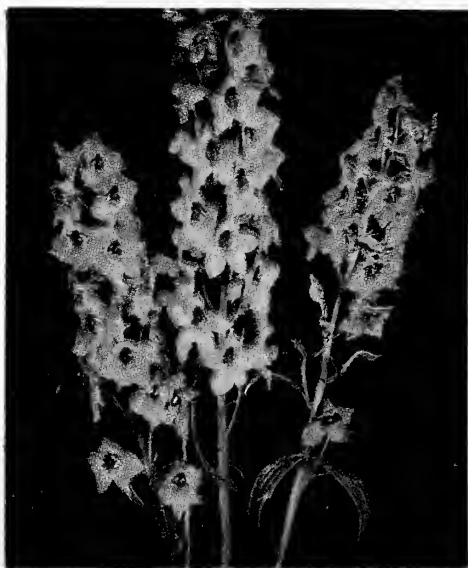
Sweet William, Barbatus—One of the best and most satisfactory of the old-fashioned plants. We furnish them in assorted colors of an endless variety. 15 inches. June and July.

Thousand-to-One-Aster, Boltonia—A hardy native perennial that has been propagated for years. Large aster-like flowers of pink, slightly tinged with lavender. 4 to 5 feet. June to September.

Veronica, Longifolia—One of the handsomest blue flowering plants. Spikes completely studded with blue flowers. Fine for cutting and one of the best plants for the hardy border. 2 feet. July to September.

Yucca, Filamentosa—A very striking plant of tropical appearance. A stiff clump of sword-like leaves is surmounted by a stalk of beautiful creamy white bell-shaped flowers. Well adapted to isolated positions on the lawn or on dry banks where other plants do not thrive. 5 to 6 feet. June and July.

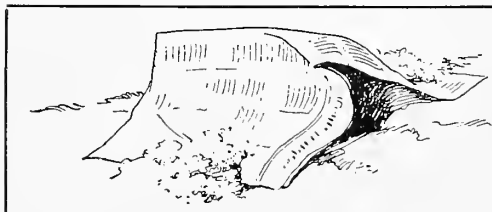
Yucca, Glosa—Beautiful flag-like leaves curled to a stiff sharp needle point at the end. 15 inches.



Larkspur



Gaillardia



A piece of newspaper used to shade newly set plants.



In dry weather mulch to save moisture.



Phlox

AS a perennial the Phlox ranks high among the most permanent and satisfactory. The foliage is good during the entire summer and the flowers range in all shades from white to deep red and purple and last from July to October. The flower is best adapted to massed planting either in beds or along the border. Set Phlox in a warm sunny place in deep rich soil. On account of the long blooming season the Phlox is a heavy feeder and should have frequent fertilization and cultivation. The following list is recommended for beauty and hardiness:

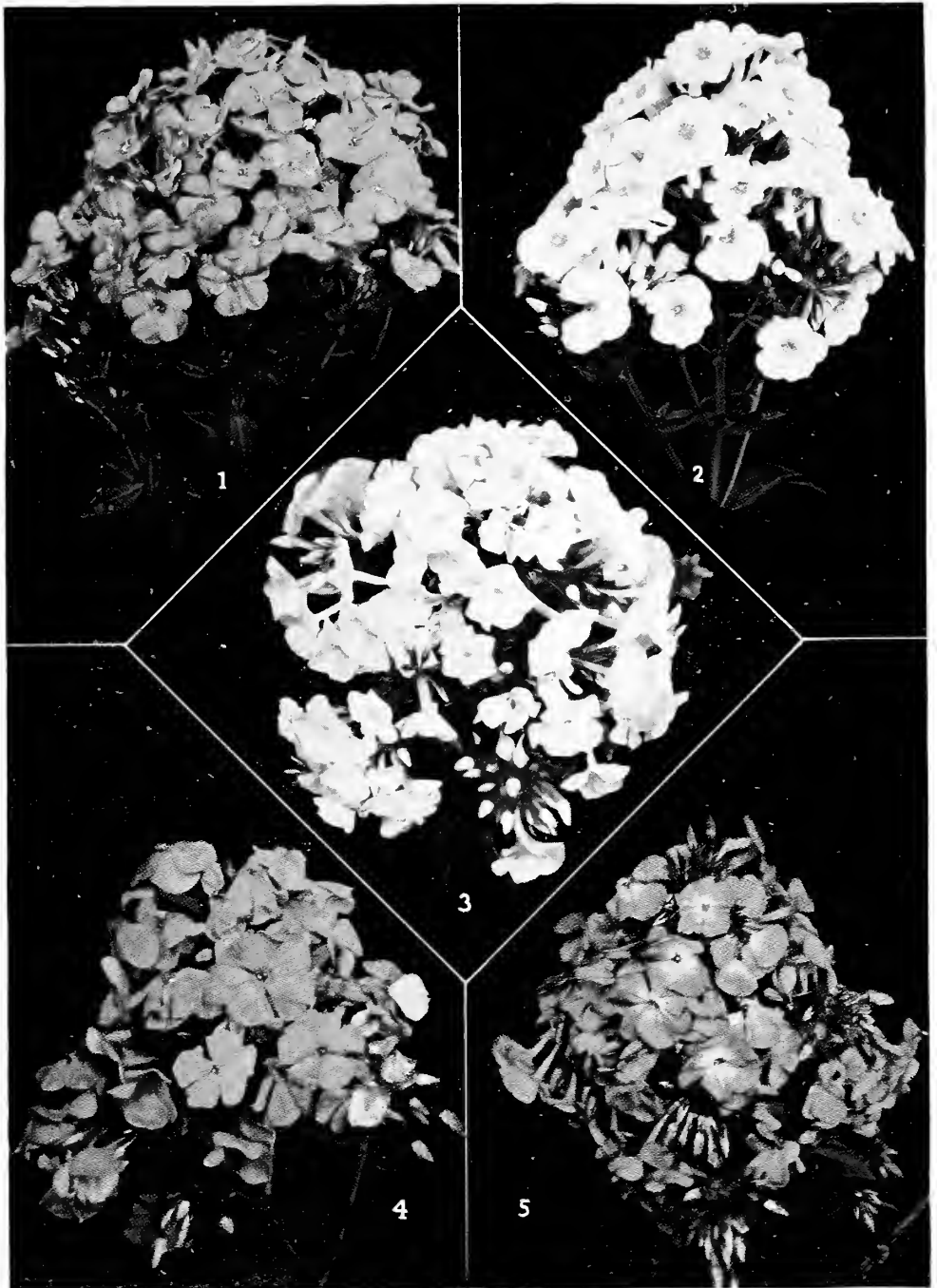
- Champ Elysee—Red.
- Commander—Pink.
- Eclairoux—Purple.
- Enchantress—Pink.
- Jean De Arc—Late tall white.
- Milly Von Hoboken—Pink.
- Mrs. Chas. Dorr—Light purple.
- Mrs. Jenkins—White.
- Mrs. Lingard—Early white.
- Nemaha—Dwarf white.
- Pantheon—Pink.
- Prof. Schliemann—Pink.
- Pluton—Red.
- R. P. Struthers—Pink.
- Rheinlander—Pink.
- Richard Wallace—White, pink center.
- Thor—Pink.
- Reinlander—Pink.
- Widar—Purple, white eye.
- Yules Sandeau—Pink.

Peoria, Ill.

Gentlemen:
I want to say this, that your nursery stock is the finest bunch of stock I have ever had the pleasure of handling in my twelve years of business.

I cannot begin to thank you for sending such wonderful plants.

WILLIAM WYATT GARDNER.
September 17, 1928



1 Pantheon
2 Richard Wallace

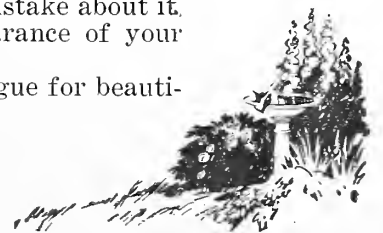
3 Von Lassburg
4 Rheinlander

5 Widar

What impression do your home grounds make?

The world judges by appearances! Make no mistake about it, you are being judged every day by the appearance of your home grounds.

Particularly is this true now, when a great vogue for beautiful home surroundings is sweeping the country—when well-planted and well-kept home grounds are as much a part of the trend of the times as modern motor cars and fashionable apparel.



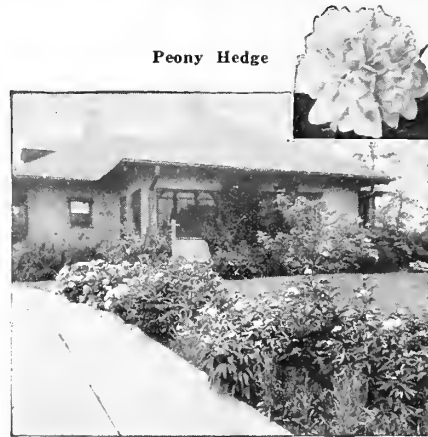


Peonies

THERE is no flower today that has so many real admirers in America as the Peony and no flower that is so universally grown. There are thousands of people who grow large blocks of peonies of many varieties purely for the pleasure and recreation they get out of it, in fact the "Peony Fan" is getting to be about as numerous as the "Sport Fan." No matter how large or small the flower garden, it seems the Peony must be there with its rugged dark green foliage and massive yet delicate blooms to complete the picture. Not only is this true but the Peony will stand more abuse and neglect than almost any other flower and yet serve well its master. Of course, no one wants to abuse anything so grand and beautiful as a Peony and if you will give them the ordinary soil and care that you would any other flower you will be delighted with the results and well repaid for your efforts. Plant Peony roots in good rich, well drained soil, from two to three feet apart each way. Cover with three, or not over four inches of loose dirt and pack well. If planted too deep they are liable not to bloom and if too shallow the frost is very apt to heave the crown eyes out of the ground and kill them. Give them plenty of water just before blooming time. In the fall cover the bed with about two inches of coarse manure and in the spring rake it away from the plant and work into the soil. As the plants become well filled after three or four years take up the roots early in September and divide them, leaving three or four good crown eyes to each division. These should be planted at once, in a different location, or if planted in the same place it is best to dig out the old earth around the plant and fill in with new. Do not be discouraged if your blooms are not what you expected the first and second year as Peonies seldom bear



Couronne D'Or



Peony Hedge

true to type during the first two years. Wait until the third year and you will know exactly what you have. The following list will give you a wide range of colors from which to select.

- Albero—White.
- Albrecht Von Schoffelt—Rose.
- Alexander Dumas—Pink and cream.
- Benjamin Franklin—Crimson red.
- Couronne D'Or—White and yellow.
- Chas. McKillup—Crimson.
- Delachei—Red, gold center.
- Delicatissima—Pale pink.
- Duchess De Nemours—White, lemon center.
- Eugene Verdier—Pale pink and cream.
- Felix Crusse—Red.
- Festiva Maxima—White, red blotches.
- Golden Harvest—Cream light pink border.
- Karl Rosenfield—Dark red.
- Karl Verdier—Rose.
- Louis Van Houtti—Red.
- Madam Crousse—White.
- Madam Colet—White.
- Madam Smith—Pink and cream.
- Mme. de Verneville—White splashed with pink.
- Meissioner—Red.
- Mons Jules Elie—Lilac pink.
- Princes of Darkness—Dark maroon, gold center.
- Richardson's Rubra Superba—Late, red.
- Richard Carvel—Bright crimson.
- Whitleyii—White, pink and cream center.

Every day you are judged by the appearance of your grounds

Bulbs for Fall Planting



Tulips

HARDY spring blooming bulbs form one of the most valuable of the garden's assets. There are so many varieties of them and so many of them of such simple culture that the least experienced need not hesitate to undertake the growing of them. The most satisfactory soil for growing bulbs is a fibrous loam, well supplied with sharp sand and it should also possess good natural drainage. They should be planted only in the fall in order that their roots may become established for the very early bloom. After the ground is frozen mulch the bed with clean straw or litter and rake away early in the spring. Do not use fresh stable manure at any time, either in the soil or as a mulch or you will have no flowers. An ideal way is to plant in irregular patches at the edge of the shrubbery, borders or about the lawn beneath the trees. Beds may be used and definite color schemes worked out. A thin layer of sand upon which to lay the bulb will well repay for the trouble. The accompanying diagram shows the depth to plant the different bulbs.

TULIPS

The tulip in spring brings a wealth of colors and shades of a wonderful richness in texture. The early tulips, both double and single, begin to flower in April. We have selected what we think to be the best varieties of the different colors.

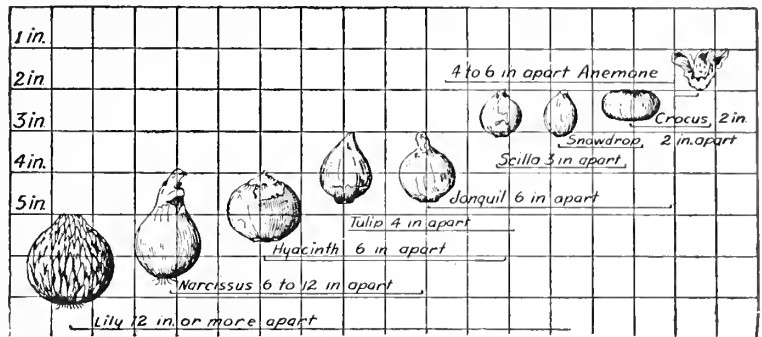
- Early Single—Red, pink, yellow and white.
- Early Double—Red, pink, yellow and white.

BREEDER TULIPS

- Cardinal Manning**—Dark rosy violet, flushed rosy bronze.
Clio or Bronze Queen—Apricot colored bronze.
Yules Tavr—Bronze, inside light.
Madras—Dark bronzy yellow and old gold.
Medea—Rosy carmine, tinged with salmon.
Panorama—Deep orange red shaded with mahogany.

DARWIN TULIPS

- The Darwin Tulips are beautifully outlined, cup-shaped and carried on tall, stiff stems, 18 to 24 inches in height. They bloom in May.
Bartigon—Carmine red.
Baron De La Tonnaye—Bright rose.
Clara Butt—Salmon, rose pink.
Farncombe Sanders—Fiery rose scarlet.
Inglescombe Yellow—Pure yellow.
Pride of Haarlem—Bright rose, suffused with purple.



- Rev. Ewbank**—Vivid heliotrope lilac.
White Queen—Lovely soft white.
Zulu—Rich velvety purple black.

NARCISSUS OR DAFFODILS

The varieties in our list have been carefully chosen from the large number of varieties grown abroad and have been thoroughly tested.
Alba Pleno—Double white.
Princeps—Trumpet yellow.

HYACINTH

A bed or border of Hyacinth proves attractive to every beholder. With their brilliant colors and delightful fragrance together with their long keeping qualities and decorative appear-

ance they command a valuable place in every home and garden. Good enriched soil and extra care will be appreciated and repay many fold. We furnish them either assorted or in the following colors: Blue, red, pure white and pink.

CROCUS

One of the earliest flowers to open in spring, the Crocus makes an effective show when planted in masses or where three or four rows are arranged in the border. They are perfectly hardy and can be left in the ground for several years without being disturbed. They come assorted in many varieties and shades of white, yellow, lavender and purple.

Bulbs for Spring Planting

IN order to bring beauty during late summer and fall when most of the earlier flowers have come and gone there should be a liberal planting of Dahlias, Cannas and Gladiolus. They will help round out the season in a pleasing way. They cannot be treated as other bulbs or perennials as frost is fatal to the tubers. Dig them up in the fall before the ground freezes and after they have been thoroughly dried and cleaned store them in a cool, dry part of the cellar in shallow boxes.

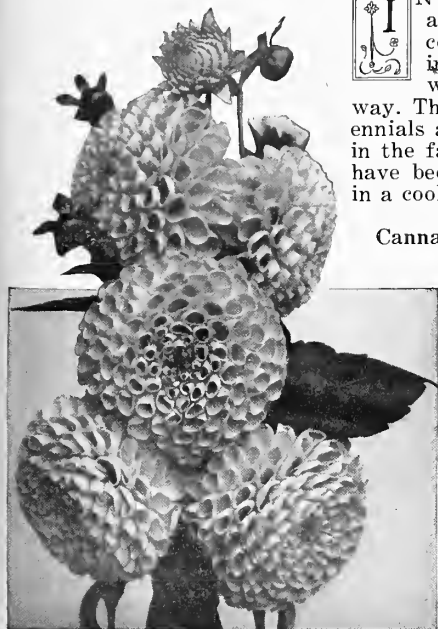
Cannas—A wonderful bedding plant, very bold and striking in appearance. Does well in almost any soil but responds quickly to good care and fertilization. Plant two feet apart and three to four inches deep. We have selected the following varieties which we consider best suited for general planting.

- Mrs. Alfred Conrad—Pink.
- Wintzer's Colossal—Red.
- King Humbert—Red.
- President—Red.
- Florence Vaughn—Bright yellow.

Tritoma, Pfitzerii—A choice border plant of free blooming qualities and a peculiar flower, rank. Scarlet to orange. Must be taken up in winter. 2 to 3 feet. August to October.

Dahlias—Very showy for late bloom, in a great variety of colors. For ordinary planting we suggest mixed varieties. If special colors are wanted, order by name. Somewhat injured by drought and should be watered during dry seasons. Plant not closer than 18 inches apart and 3 inches deep.

- A. D. Lavoine—Shell pink.
- Frank A. Walker—Lavender and pink.
- Darlene—Pink and white.
- Libelle—Deep rosy purple.
- Little Jennie—Primrose yellow.
- Manitou—Purple.
- Marley—Yellow and white.
- Maryone Casel—Pink and white.
- Mrs. Bowentuft—Rose purple.
- Storm King—White.
- Souvenir De Gustav Duazon—Orange red.
- Yellow Duke—Yellow Primrose.



Dahlias

Clinton Falls Nursery Co.
Dear Sirs:

Last spring we purchased 500 Latham raspberry plants of your nursery, and they certainly are wonderful plants, practically every one grew, and this fall we picked over one hundred quarts of berries off of them, the largest red raspberries we have ever raised. In fact some of the bushes still have berries on them now.

We are mighty well pleased with these plants and would like your catalog or price lists on your other nursery stock, including shrub-

bery, trees, flowers, etc. We expect to put out some black raspberries in the spring and would appreciate your advice as to what variety would succeed best here in our climate. We also expect to plant a few trees and shrubs.

Thanking you for your catalog and any information you may offer, I am

Very truly yours,

CHAS. H. LOVELESS,
La Porte City, Iowa, Rt. 1.



Gladiolas

Gladioli—It is certain that no flower can give so great beauty for so little expense and labor as a good collection of Gladioli. They are easily grown and the bulbs can be used for years if they are carefully stored as explained above. They make beautiful cut flowers for the house during the late summer and fall. Bulbs should be planted four inches deep in good mellow soil. Order either assorted or special named varieties.



- America—Pale pink.
- Assorted—All colors.
- Black Hawk—Cardinal red, black blotch.
- Chris—Dark maroon.
- Empress of India—Purple
- Fairfax—Purple.



- Halley—Salmon pink.
- Heley Franklin—White, violet markings.
- Hohenstouffen—White.
- Jesse—Rich velvety red.
- Maiden Blush—Pale cream.
- Marshall Foch—Rose pink.
- Mrs. W. E. Fryer—Blood red.
- Mrs. Frances King—Red.
- Mrs. Whitney—Yellow, light.
- Peace—White.
- Pendleton—Pink, blotched with red.
- President Taft—Pink.
- Primanulis—Yellow.
- Schwaben—Yellow.
- War—Dark red.
- White Giant—White.
- Wilbrink—Light Pink.
- Willie Wigman—White.

The Iris

German Iris—Can be grown in any kind of soil successfully but it loves a moist situation best. They are in bloom usually before Memorial Day and the flowers cover the most exquisite tints and colorings. We believe we have one of the finest assortments of this popular plant to be found anywhere.

- Desk Clark—White and violet.
- Flavescens—Cream and white.
- Flava White—White.
- Gertrude—Violet.
- Her Majesty—Pink.
- Honorabilis—Yellow and brown.
- Ignita—Light violet.
- John De Witte—Light purple.
- Lord Grey—Light cherry.
- Lord Wolesley—Light purple.
- Madam Chereau—Violet.
- Magnifica—Reddish violet.
- Malvina—Golden grey and wine.



German Iris

- Peransensis—Violet, cream center.
- Prosper Langier—Bronze and red.
- Rhein Nixe—White and purple.
- Thyspi—Light violet.
- Velveteen—Cream and cherry.

Japanese Iris—This should not be confused with the German Iris, as they are an entirely different strain. It blooms a month later, has a much larger flower, but is not so free a bloomer. It makes up in size and intensity of coloring what it lacks in abundance of bloom.

- Snow Queen—White.
- Blue King—Purple.
- Superba—Dark purple.
- Fairy—Purple.
- Japanese—Sky blue.

Siberian Iris—These are a Siberian variety of extreme hardiness. They are the latest to bloom of all the Iris family.

- Alba—White.
- Gravet—Violet and light blue.



Lilies

ALTHOUGH the lily is one of the most stately and attractive of all the blooming garden plants they seem to be also the least understood and appreciated. The ornamental value of the lily lies almost entirely in the flowers as they are of scant foliage and of a character altogether foreign to the usual blending of parts. Most lilies are heavy bloomers and are very striking in color and should be grouped against a strong green background for the best effect. They love warm sun but their bulbs will not stand hot baked soil. The soil most desirable is a loose sandy loam which will be enriched by a top dressing of manure and should be well drained. They should be sheltered from the wind and if possible be shaded at noon. Keep bulbs from undue exposure to air and plant in the spring about six inches deep. Winter mulch always pays. Never allow manure to come in direct contact with the root bulbs. They



Lilium Tigrinum

may be left in the ground from year to year. The following list gives a wide range of color from which to select and are perfectly hardy.

- Auratum—White, dotted with chocolate red.
- Coerulea—Light purple.
- Cura—Light purple, variegated foliage.
- Day Lily—Orange.
- Flava—Yellow.
- Green Leaf Funkia—Purple.
- Lancolata—Light purple.
- Hemeralls Thunbergi—Orange.
- Lilium Candidum—Pure white.
- Lilium Elegans—Red.
- Magnificum—White flecked with dark red.
- Regale—Ivory white, splashed with yellow, pink stripes.
- Rubrum—White, spotted with rose red.
- Tigrinum—Orange, dotted with crimson.
- Umbellatum—Red.
- Varogal Funkia—Purple, variegated leaf.

Roses

THE rose has truly been christened the "Queen of Flowers." There is no flower so beautiful, so fragrant and so universally loved and appreciated as the rose. Originally the rose was considered more of a tropical or hot house plant, but with the introduction of the many varieties of Hybrid Perpetual Roses, horticultural science has made it possible for the Northwest gardener to enjoy as wide a variety and as beautiful rose beds as our Southern neighbors. These Hybrid Roses, crossed between the June and Monthly roses, retain not only the hardiness of one parent but also the perpetual blooming habits of the other. As all hybrid roses bloom on new wood only, they should be cut off to about eight or ten inches above the ground each spring and they will send up good strong shoots that will produce much larger blooms than will the weak slow growth from the old wood if left untrimmed. Clipping of the seed pods is also an aid in the blooming. When setting out new plants, make the ground rich with well rotted manure well worked in and dig the holes large enough so that the roots will not be crowded. Cut new plants down to about six inches from the ground and water liberally when planting. They should be kept well cultivated until about July 1st and then well mulched with straw or lawn cuttings. Spray with lime-sulphur for fungus and with arsenate of lead for slugs and caterpillars. All hybrid perpetual roses need winter protection. This can be easily done by throwing up a mound of earth around the plants about twelve inches high before the ground freezes and after the ground is frozen cover the bed with branches or coarse corn stalks to hold the winter snows. After the frost is gone in the spring remove the litter and earth and cut back at once. The following lists are grouped as to color to make easy selection and are recommended for hardiness.



HYBRID PERPETUAL ROSES

RED

- American Beauty.
- General Washington.
- General Jack
- Gruss en Teplitz.
- Louis Van Houttii.
- Marshall P. Wilder.
- Prince Camille de Rohan.
- Ullrich Brunner.
- Amelia Grovonaux.
- Captain Hayward.
- J. B. Clark.

- John Hopper.
- LaFrance.
- Mrs. John Laing.
- Magna Charta.
- Paul Neyron.

YELLOW

- Harrison Yellow.
- Persian Yellow.
- Soliel D'Orr.

WHITE

- Frau Karl Druschki.
- Mable Morrison.
- Margaret Dickson.
- Madam Plantier.

PINK

- Anne de Diesbach.
- His Majesty.

CLIMBING ROSES

Climbing roses should be trimmed back sparingly after the first year and should be covered during the winter. Spray same as hybrid perpetuals.

WHITE

- Dorothy Perkins.
- Baltimore Belle.
- Baby Rambler.
- White Rambler.

- Seven Sisters.
- Paul's Scarlet.

RED

- Pink Baby Rambler.
- Dorothy Perkins.
- Pink Rambler.
- Prairie Queen.

- Baby Rambler.
- Crimson Rambler.
- Climbing American Beauty.
- Excelsa.
- Flower of Fairfield.
- Tausendschoen.
- Single Red Climber.

HYBRID RUGOSA ROSES

These new hybrid rosa Rugosas can be grown anywhere in Minnesota or the Dakotas without winter protection. They are a wonderful addition to the rose family being exceptionally free from worms and disease. They grow to four or five feet high, start blooming early and continue through summer to late fall, furnishing an abundance of cut flowers the entire season. They make the most beautiful flowering hedge known.

- Blanche de Coubert—Double white.
- Belle Poitevine—Double deep pink.
- Conrad F. Meyer—Double pink.
- Grootendorst—Double bright crimson.
- Hansa—Double red.
- Sir Thos. Lipton—Double white.
- New Century—Double rose pink.



Climbing Vines

C LIMBING vines play a very important part in all landscape planting. With them many a stone wall or unsightly back yard fence can be transformed into a pleasing background for inside planting. Brick, stone or stucco walls of the home which look bare and brazen may be softened and beautified with climbers. The flowering sorts should be well cared for the first year and the earth thrown up in a mound at the trunk to prevent water standing around them. Cut worms sometimes work havoc with the young tender sorts but this can easily be prevented by removing both ends of a good sized tin can and pressing it down over the plant; wood ashes are also very effective.



Clematis Paniculata

Clematis, Madam Ed Andre—Flowers large and of a beautiful wine color. Free flowering and continuous bloomer.

Clematis, Paniculata—A great novelty from Japan. It has proved to be one of the most desirable, useful and beautiful of all hardy vines. A luxuriant grower and profuse bloomer. Small, white fragrant flowers in September. Useful for covering verandas, pillars or fences where a trellis or support can be provided. Makes a growth of twenty to thirty feet in a single season and should be cut back to the ground each season.

Clematis, Coccinea—A very handsome hardy climber, bearing small, thick, bell-shaped flowers of bright coral red, in wonderful profusion from June until frost. Its small shiny foliage is very ornamental.

Clematis, Ramona—One of the large flowering varieties, similar to the *Jackmanii* except that the flowers are of a deep sky blue. Hardy and prolific.

Clematis, Virginiana—A remarkably rapid climbing plant, growing to the height of twenty feet producing a profusion of white flowers in August.

Dutchman's Pipe—A vigorous and rapid growing climber, with yellow-brownish flowers resembling a pipe in shape. Fine foliage of light green leaves of large size which retain this color from spring to fall.

Hall's Japanese Honeysuckle—A strong, vigorous, almost evergreen sort, with pure white flowers changing to yellow. Very fragrant and covered with flowers from July to November. Holds its leaves until January.

Honeysuckle, Climbing Scarlet Trumpet—Semi-evergreen, scarlet flowers followed by berries of the same hue. A special favorite with all lovers of old-fashioned flowers.

Matrimony Vine—Produces a large number of purple flowers which are succeeded by bright scarlet berries almost an inch long. It blooms throughout the summer and the fruit remains on the vine until late in winter.

Wisteria—One of the most rapid growers of all the climbing plants. Grows fifteen to twenty feet in a season. Has long pendulous clusters of pale blue flowers in May and June and sometimes in autumn.

Ampelopsis, Engelmannii—Short jointed with fine foliage. Clings to brick or stone. A good grower and very hardy. The best for the north and northwest. Foliage beautiful red in fall.

Ampelopsis, Veichii—Very graceful, but of delicate habit. Thrives best in shaded position. Clings perfectly to smooth, hard surfaces. Foliage dark green, changing to orange and red in fall.

Ampelopsis, Quinquefolia—The old original Virginia Creeper, sometimes called Woodbine. It is an extremely rapid grower. Leaves are deeply cut and turn to a beautiful shade of red in the fall.

Bittersweet—A native climbing or twining plant with fine, large leaves. Yellow flowers and clusters of orange, capsuled fruit. It grows ten to twelve feet in a season.

Clematis, Henryi—New and one of the best perpetual hybrids, of robust habit. The flowers are white, large and very showy.

Clematis, Jackmanii—Flowers from four to six inches in diameter, intense violet-purple with a velvety appearance, very hardy. A free grower and often blooms from midsummer until frost. Fine for porch or trellis.



A Block of Peonies with CHAS. MILLER, Peony Specialist, in the Background





Flowering Shrubs

NOTHING can add more to the beauty of the home than to have the sides and background well filled with nicely arranged groups of shrubbery. By a judicious selection of varieties a succession of bloom may be had from early spring until late fall. The flowers may be had in many forms and in going over the following list it will pay to make some attempt at following out a blooming scheme. Shrubs, for best results, should not be scattered about the lawn, but massed in irregular groups against the buildings, in the corners and at the back and sides of the lawn. This is done to leave broad areas of light and shade which is essential. Flowering shrubs, except those marked (*) should be cut back severely at planting time, leaving not over eight inches to a foot above the ground. Those marked (*) should be cut back very little if at all. They do better when kept well trimmed each year, but this should, unless otherwise noted in the description, always be done after they are through blooming, never in the spring if you want them to bloom, as spring trimming takes away the flower buds. Mulching and spraying always pays.

Aralia Spinosa (Hercules Club)—A singular looking, small sized tree with very prickly stems. Pinnate leaves and bearing immense panicles of white flowers in midsummer. Very useful to give a tropical effect to gardens and for odd looking clumps for background.

Artemisia—Deep green, cleft foliage and compact bush shape. The creamy white flowers, which resemble Herbaceous Spireas, are sweetly scented, and borne in large terminal panicles on erect stems. 3 to 4 feet. August and September.

***Red Leaved Japanese Barberry**—The foliage of this new variety is of a rich, lustrous, bronzy red. Becomes more brilliant and gorgeous throughout the summer and in the fall color changes to a vivid orange. All that is required to develop its brilliant colorings, at all seasons, is that it be planted in full exposure to the sun.

***Cotoneaster**—An attractive, beautifully formed shrub with thick, glossy leaves, turning to red in the fall. Small white flowers in early summer followed by large black berries which remain on the bush nearly all winter. Perfectly hardy. 8 to 10 feet.

***Cranberry, High Bush**—Handsome native shrub. Flowers white in flat clusters, followed by bright scarlet berries which hang to the bush through the winter. 8 to 12 feet. May and June.

Currant, Alpine—Dense and upright. Yellow bloom. Excellent for dry sterile soils and under planting. Foliage beautiful. 3 to 5 feet. May.

Currant, Yellow Flowering—Very hardy and has a profusion of yellow fragrant flowers followed by brownish fruit. Does well in shady locations. 5 to 6 feet. May.

***Crab, Double Flowering**—Tree of medium size covered with double fragrant flowers of delicate pink to white. Hardy and blooms when quite young. 15 feet. May.

Dogwood, Lutea—A yellow branched form of the Stolonifera, used very effectively for contrasting. 6 to 10 feet. June.



Prunus Triloba

Dogwood, Siberica—Blood red branches. Grows in great tangled masses when mature. Flowers yellowish white, fruit pearly white. 5 to 8 feet. May and June.

Dogwood, Variegated—Fine variegated leaved shrub, or rapid growth and valuable to plant singly or in groups. Leaves are distinctly variegated, white and green. 4 to 6 feet. May and June.

Dogwood, Sanguinea—Handsome wide growing shrub, with deep red or purplish branches. Black berries. 6 to 12 feet. June.

Dogwood, Stolonifera—A hardy shrub with bright red bark in winter. White flowers in flat clusters. White berries. 6 to 10 feet. June.

***Deutzia, Rosea**—A large growing type with pink flowers. Not very hardy and liable to freeze back in winter. 3 to 5 feet. June.

Double Flowering Almond—A low shrub, upright in growth and one of the most spectacular in early spring. Blooms early and profusely. We have them in red, pink and white. 3 to 5 feet. May.

Elder, Common—A large rapid growing shrub with immense flat clusters of white blossoms in early summer followed by black berries which are often used for pies, etc. 8 to 12 feet. June, July.

Elder, Cut Leaved—A strong grower with elegantly divided foliage. Does well in shaded locations. 8 to 10 feet.



Elder, Golden—A beautiful rapid growing shrub, with bright golden foliage, the metallic luster of which is relieved in season by masses of white bloom. 6 to 8 feet. June and July.

Elder, Red Berried—Blossoms white, produced in great profusion followed by bunches of red berries. Bush vigorous and hardy. 8 to 12 feet. April and May.

Forsythia, Fortuna—An upright spreading bush with handsome pendulous trumpet shaped, bright yellow blossoms. Foliage deep shining green. Not exceedingly hardy. 6 to 8 feet. April and May.

Forsythia, Suspensa—Slender arching branches lapping over on the ground. Flowers striped with yellow. Useful for banks and walls. Needs winter protection. 6 to 8 feet. April and May.

Honeysuckle, Tartarian—One of the most popular ornamental shrubs. Very hardy, large growing, easily transplanted and does well in any soil. Abundant foliage and delicate flowers, followed by red or yellow berries. We grow the red, pink and white; state color wanted. Does not need much pruning. 8 to 15 feet. May and June.

Honeysuckle, Morrowi—A Japanese variety. Remarkably fine plant with wide spreading branches. Yellow flowers, followed by red berries during the latter part of the summer. Leaves remain late in fall. 4 to 6 feet. May and June.

Hydrangea, Paniculata Grandiflora—A most valuable shrub. Medium size with fine large foliage and immense trusses of white flowers, changing to pink and finally reddish brown. Bushes transplant very easily and usually bloom the first year set out. Plant singly or in groups. Bushes should be trimmed back severely each spring to get nice large flowers. 3 to 6 feet. August to September.

Hydrangea, Arborescens—A vigorous upright shrub with creamy white flowers in flattish clusters. Foliage finely finished. Excellent for grouping with other shrubs as it blooms after most of the others are through. 4 to 6 feet. June to August.

***Hydrangea, Tree Form**—A very striking specimen and particularly adapted to use on small lawns. Spreading head with beautiful flowers. 6 to 8 feet. July to October.

Butterfly Bush—Sometimes called the summer lilac. The violet colored blossoms are borne in terminal panicles and one bush will often attract hundreds of butterflies. Fragrant and showy. 3 to 6 feet. Late summer.

***Juneberry**—A high growing tree-form shrub with drooping racemes of feathery, pure white flowers. Berries resemble blueberries in both appearance and taste. 10 to 20 feet. May.

***Juneberry, Dwarf**—More or less compact in growth with beautiful foliage and pure white flowers. 5 to 7 feet. April and May.

***Lilac, Chas. X**—Very hardy. This variety is a grand improvement over the common purple. Flowers reddish purple, one-half larger and more abundant. 8 to 10 feet. May and June.

***Lilac, Common Purple**—A very hardy, large growing shrub, with purple flowers. Much used in hedges and individual planting. 8 to 12 feet. May.

***Lilac, Common White**—Of rapid growth, with large shining foliage. Produces large clusters of fragrant white flowers. 8 to 10 feet. May.



Tartarian Honeysuckle

Lilac, Josica—A distinct sort of tree-like habit, producing purple flowers when most others have ceased to bloom. 6 to 10 feet. June.

***Lilac, Ludvig Spaeth**—Panicles long, individual flowers large, dark purplish, red, distinct. The finest of its color. 6 to 8 feet. May and June.

***Lilac, Madam Lemoine**—Undoubtedly one of the best profuse blooming double white lilacs. Always satisfactory. 6 to 8 feet. May and June.

***Lilac, Marie LeGrey**—Large panicles of single white flowers. One of the finest and best blooming sorts. Very fragrant. 6 to 10 feet. May.

***Lilac, Persian Purple**—A more graceful form than some varieties of lilac. The branches are slender, leaves finer and more pointed. Flowers are purple, very fragrant and borne in large panicles. 6 to 8 feet. May and June.

Lilac, Persian White—Similar to the Persian Purple except that the flowers are white. Very good variety. 6 to 8 feet. May and June.

***Lilac, Pres. Grevy**—Individual flowers of the largest size, very double, trusses large. One of the best blue sorts. 5 to 8 feet. May.

***Lilac, Rothomagensis**—A grand improvement on the common



Persian Lilac. Flowers larger and of reddish purple color, and abundant. Very fragrant. 6 to 10 feet. May and June.

***Lilac, Villosa**—A Japanese variety. Flowers are silvery rose and produced in great profusion. A grand distinct type and very satisfactory. 6 to 8 feet. May and June.

***Lilac, Tree Villosa**—Same as the Villosa but trained in tree form. Very beautiful in the heavy border or for individual planting. Lavender flowers. 8 to 12 feet. May and June.

***Maple, Tartarian**—A dwarf shrubby tree with handsome, finely cut leaves. Good for grouping or planting singly in corners. Attractive clusters of winged seed pods. 15 feet.

Prunus, Pissardi—Large shrub or small tree used to color up shrubbery plantings. Its shining purple leaves hold their color well during the summer. 5 to 10 feet.

Prunus, Triloba—A beautiful shrub of medium height, blooming with a great profusion of delicate, pink, rose-like blossoms. Resembles the Flowering Almond but the bush is hardier and larger. Without doubt one of the prettiest shrubs we have. Fine foliage. 6 to 8 feet. May.

Prunus, Tomentosa—A white flower-in plum. Valuable for its ornamental fruit and foliage. 8 to 10 feet. May.

***Snowball, Viburnum Lentago**—Large clusters of cream flowers followed by bluish black fruits. Leaves bronze in spring, orange and scarlet in fall. 15 to 20 feet. May and June.

***Snowball, Viburnum Dentatum**—Upright and bushy with an excellent green foliage. Flowers pure white, scarlet berries. 8 to 10 feet. May and June.

Snowball, Viburnum Opulus, Sterilis—A splendid ornamental with large, globe-like balls of white flowers. No fruit. Extremely hardy. 6 to 8 feet. May and June.

***Snowball, Tree**—The same as Viburnum Lantana only trained in tree shape, with large spreading crown which presents a beautiful appearance when in bloom. May and June.

Snowberry, White—A rather low growing shrub with small pink flowers, followed by white berries, which hang on until winter. Exceptionally fine foliage. 2 to 4 feet. July and August.

Snowberry, Red—Commonly called Indian currant. Similar to the white except that the fruit hangs in large clusters of bright coral red. 2 to 4 feet. July.

Spirea, Anthony Waterer—An improved variety of this type, upright grower, large heads of dark crimson flowers. Not hardy in Northern climates. Fine for inside planting. 2 feet. July to October.

***Spirea, Arguta**—A Japanese variety of stiff irregular growth and white flowers which appear before the leaves. Foundation or border planting. 4 to 6 feet. April and May.

Spirea, Billardi—A fine spirea with panicles of bright pink flowers. Medium size, upright grower. Much used in shrub borders. 4 to 5 feet. July and August.

Spirea, Bumalda—Stiff and upright with new growth tinged with purple. Flowers rosy pink in flattish heads. 2 feet. July to September.



Syringa or Mock Orange

Spirea, Collosa Alba—Similar in growth and habit to the Anthony Waterer. The blossoms however are pure white. A free and continuous bloomer. 2 feet. June to August.

Spirea, Collosa Rosea—Flowers pale to deep pink. Unfolding leaves give a rich purplish cast to the whole plant. 3 to 4 feet. June and July.

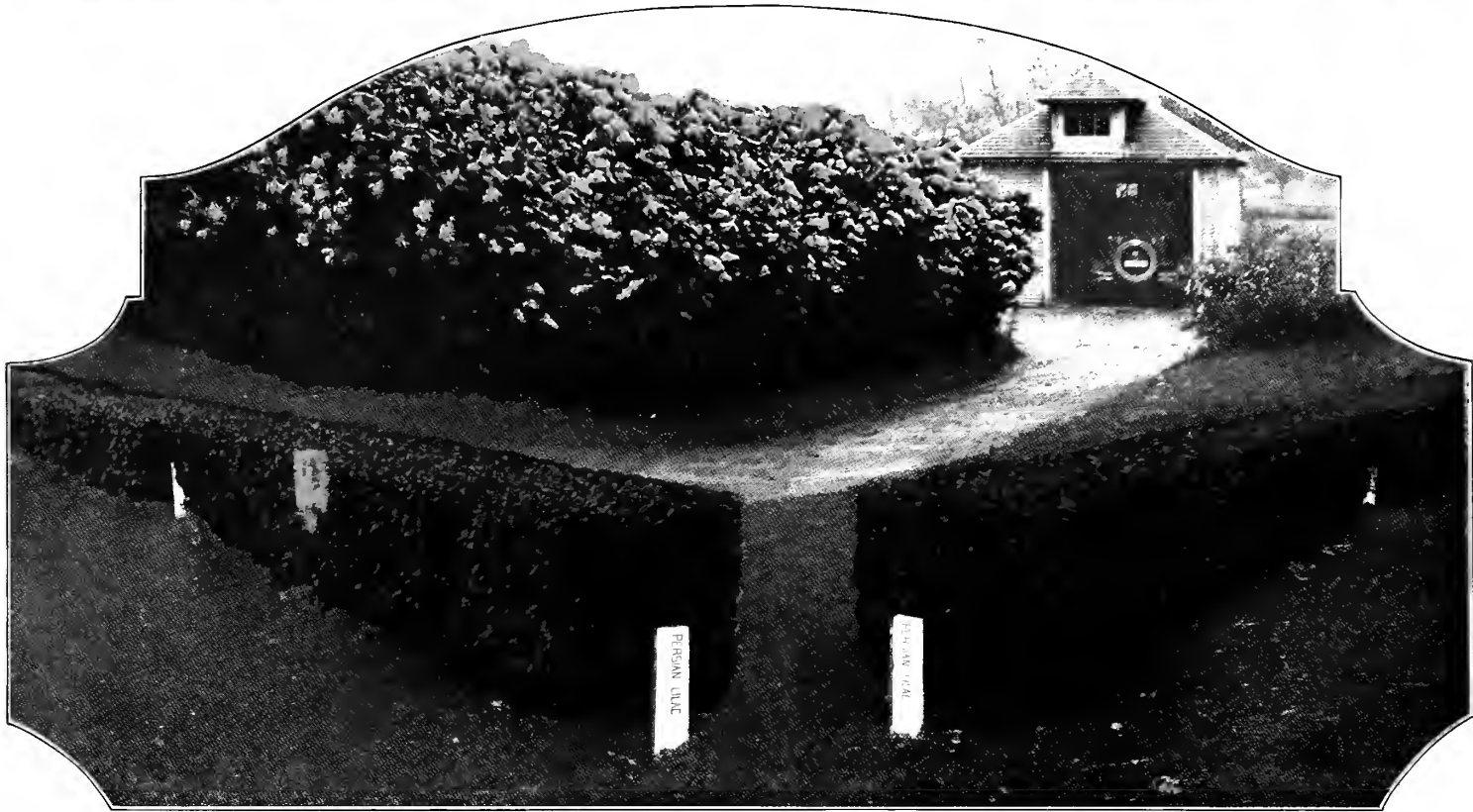
Spirea, Collosa Superba—About the same as the Rosea but a stronger bloomer and with brighter foliage. 3 feet. June and July.

Spirea, Douglasi—Deep rose plumes, used in border or behind lower shrubs about the house foundation. 5 to 7 feet. July and August.

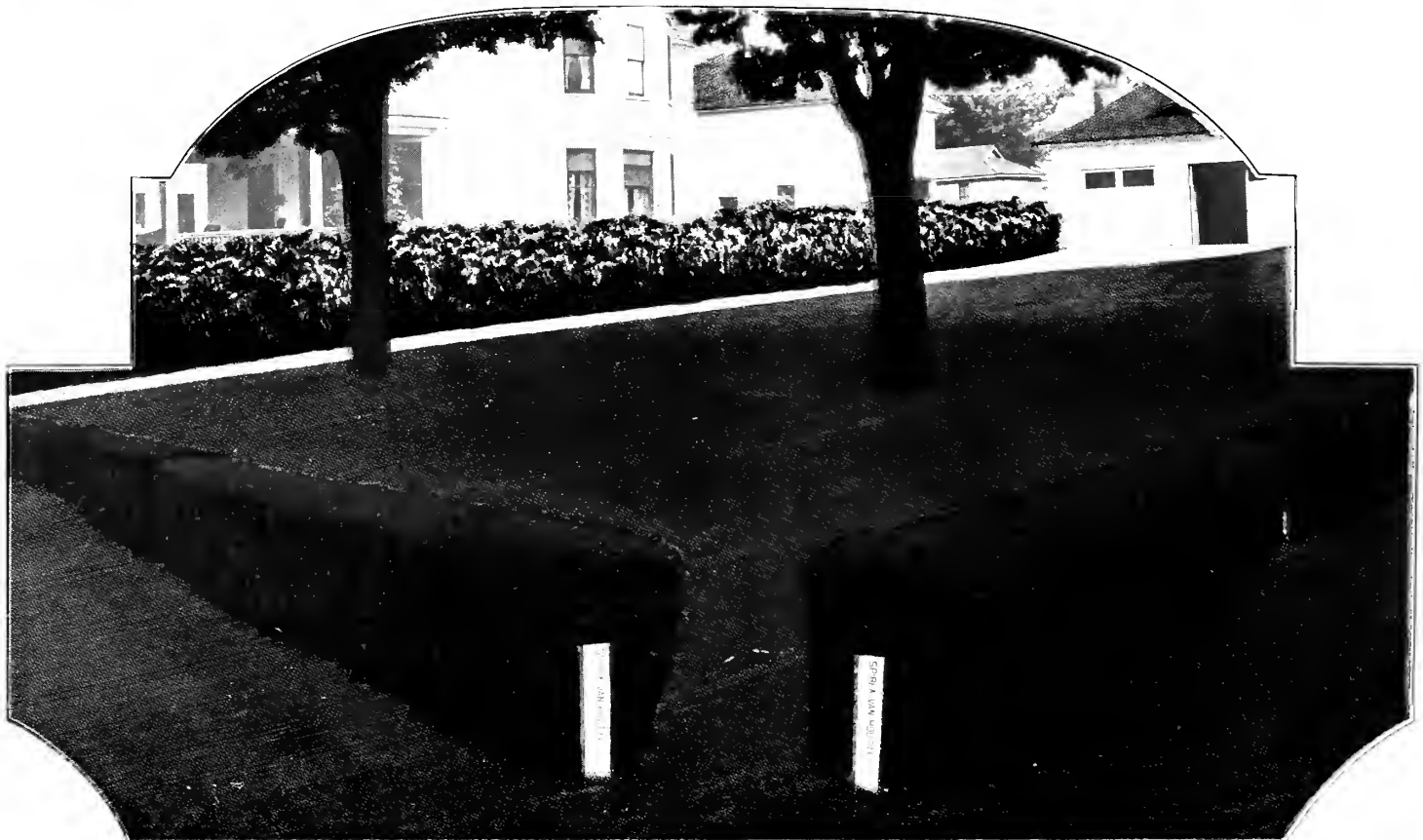
Spirea, Froebelli—Flowers bright rosy red in flat clusters. Excellent as a border shrub. Foliage turns purple in the fall. 2 to 3 feet. July and August.

Spirea, Opulifolia—The largest growing species of this group. Valuable for massing and also for background for other shrubs. White flowers. 6 to 8 feet. June.

Spirea, Opulifolia Aurea—Very much like the former except that the foliage is yellow in spring changing to golden bronze in fall. 6 to 8 feet. June.



PERSIAN PURPLE LILAC—A most graceful shrub, growing from six to eight feet in its natural state, flowers are purple, very fragrant and borne in large clusters, blooms in May and June. It is also one of the best shrubs for hedge purposes, very hardy, can be trimmed to any form, dense in growth, very attractive.



SPIREA VAN HOUTTEI—The grandest and most popular of all the Spireas and one of the best shrubs grown. It is hardy and makes a most desirable hedge, either trimmed or in its natural form, as shown above. It blooms in May and early June, producing a mass of beautiful white flowers almost covering the foliage.



***Spirea, Prunifolia**—A fine variety with plume-like leaves. Tiny rose-like bloom. Not very hardy and should have winter protection. 4 to 5 feet. April and May.

Spirea, Sorbifolia—Of a vigorous species with leaves like the Mountain Ash and long elegant spikes of white flowers. 5 to 6 feet. June.

Spirea, Salicifolia—Long, narrow willow-like leaves. Flowers rose colored. A distinct and very desirable variety. 4 feet. July and August.

Spirea, Thunbergii—One of the finest spring blooming small shrubs. The flowers are pure white and are borne along the entire length of the branches. 3 to 5 feet. April and May.

Spirea, Van Houtti—The grandest and most popular of all the Spireas, and as desirable as any shrub in cultivation. White flowers in clusters about an inch in diameter produced freely, almost covering the foliage. Hardy anywhere. Can be used in borders, about the foundation or as a hedge with good effect. 4 to 6 feet. May.

***Sumach, Cut Leaf Staghorn**—This shrub is becoming very popular for landscape plantings. It is of spreading habit with large, long, fine cut, lace-like leaves which turn to a beautiful color of gold in fall. 10 to 20 feet. June and July.

***Sumach, Dwarf Cut Leaf**—Deeply cut leaves, giving the whole shrub a fern-like appearance. Leaves turn bright red in autumn. 3 to 5 feet. July.

***Sumach, Rhus Glabra**—A native large growing shrub well adapted for covering barren hills. Very effective for coloring in landscape work, the leaves turning golden hued late in the summer. 8 to 12 feet. July.

Syringa, Golden—A compact shrub with bright yellow foliage, very effective as a foliage plant. 4 feet. May and June.

Syringa, Grandiflorus—A large and vigorous growing shrub producing an abundance of creamy white flowers of unusual size and fragrance. 6 to 10 feet. June and July.

Syringa, Lemoine—A showy and free flowing variety with slender arching branches. Flowers creamy white and very fragrant. 5 to 7 feet. May and June.

Syringa, Mock Orange—A vigorous growing shrub with sweet scented white flowers in the greatest profusion. Foliage bright and handsome. 8 to 10 feet. May and June.

Syringa, Virginallis—A magnificent new Mock Orange growing 6 to 8 feet and vigorous. It has large petals, double crested white flowers, five to seven in a cluster, sweet scented and very fine. Long blossom season.

Syringa, Mount Blanc—One of the very best of the Syringa family. Produces a mass of sweet scented white flowers covering the entire plant for a long time. Perfectly hardy and not subject to disease. 5 to 6 feet. May and June.

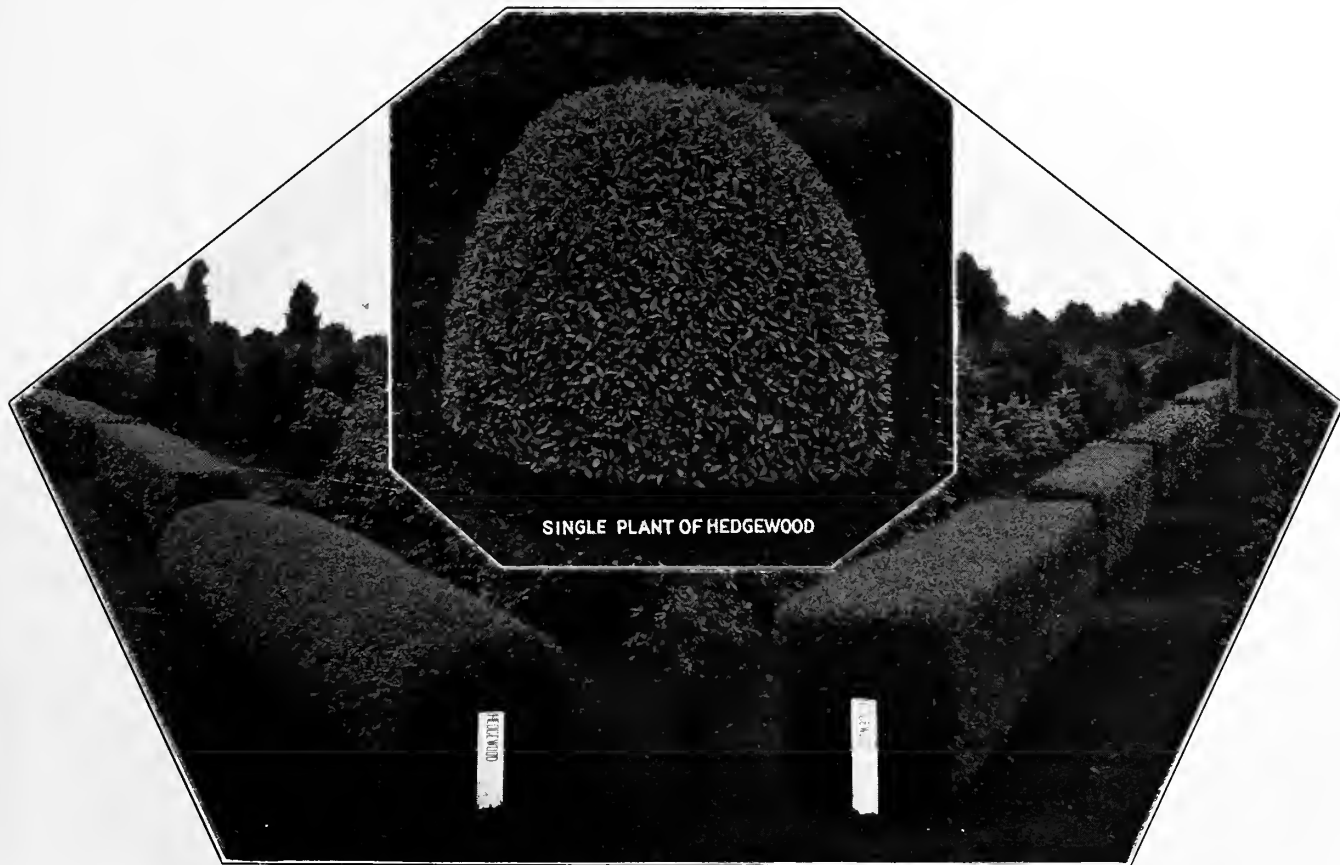
Tamarix—A distinct type of shrub, having leaves somewhat like the Juniper, crowned with delicate pink flowers. Valuable for grouping. 6 to 10 feet. July to September.

Wayfaring Tree, Viburnum Lantana—Exceedingly interesting with large showy leaves and broad flat flower clusters in white. Can stand full sun. 10 to 15 feet. May and June.

Weigelia, Rosea—Large trumpet shaped, rose colored flowers, are produced so freely that they nearly hide the leaves. Needs winter protection. 4 to 6 feet. May and June.

Weigelia, Eva Radke—A remarkably free bloomer. Flowers deep carmine crimson with yellow stamens, quite different from other varieties. Needs winter protection. 4 to 6 feet. All summer.

Weigelia, Variegated—A distinct variety having variegated leaves and an abundance of white flowers. 4 to 6 feet. May and June.



HEDGEWOOD (Salix Uralensis). Perfectly hardy. The above hedges were planted in the spring of 1926 and the picture taken July 14, 1927, just fourteen months after plants were set. The picture shows hedge trimmed in square, box-shape and oval shape also single plant specimen. Hedgewood grows rapidly and must be trimmed several times during the summer. Description: Small leaved foliage, color dark olive green, produces many branches making a thick dense hedge quickly. Best height 18 inches to 4 feet.



Hedges

An ornamental hedge is almost an indispensable factor in building a landscape. It frames the lawn and makes a natural background for all inside planting. On small grounds the low growing hedges are the most used, while for larger grounds and for screening the higher and more spreading sorts are more adaptable. For hedge purposes the plants should be set one foot apart and pruned severely at planting time. Have the ground fairly rich and stirred to a depth of at least a foot to give the young roots a better chance to start. Keep your hedge free from weeds and grass by cultivating at least a foot on each side. Hedges can be kept at any desired height by trimming, which should be done regularly and at close intervals to induce a heavier growth of foliage near the ground. Hedges where used in place of a fence, unless they are of the flowering type, should be trimmed to maintain a formal appearance. Those listed below are not classed as flowering hedges, but if grown in tree form, are more or less flowering.

Amor River Privet—The only one of the Privet family that is hardy in the Northwest. Upright in growth, very drought resistant and can be grown in shade. Stands any amount of trimming. When not kept cut bears white flowers followed by bluish-black seeds.

Buffalo Berry—A large growing shrub which makes a fine hedge, the effect of the light grey foliage being very striking. Very resistant to drought and winter killing. Has yellow flowers in June, followed by red berries which are edible.

Barberry, Thunbergii—This pretty dwarf shrub is used more than any other for ornamental and hedge planting. It is remarkable for its dense spreading growth and attractive appearance. Starts early in the spring and is covered densely with small dainty leaves which color to a brilliant hue in the fall. Large quantities of red berries are produced which hang on throughout the winter, giving a very striking appearance. This variety does not harbor wheat rust and should not be confused with the Purple Leaf Barberry, which is under government quarantine.

Buckthorn—Without doubt the most universally known hedge plant grown. Extremely rugged and hardy and stands any amount of pruning. Foliage dense and dark green. Very light bloomer.

Buckthorn, Frangula—Similar to above but, with more shiny foliage and berries. Perfectly hardy.

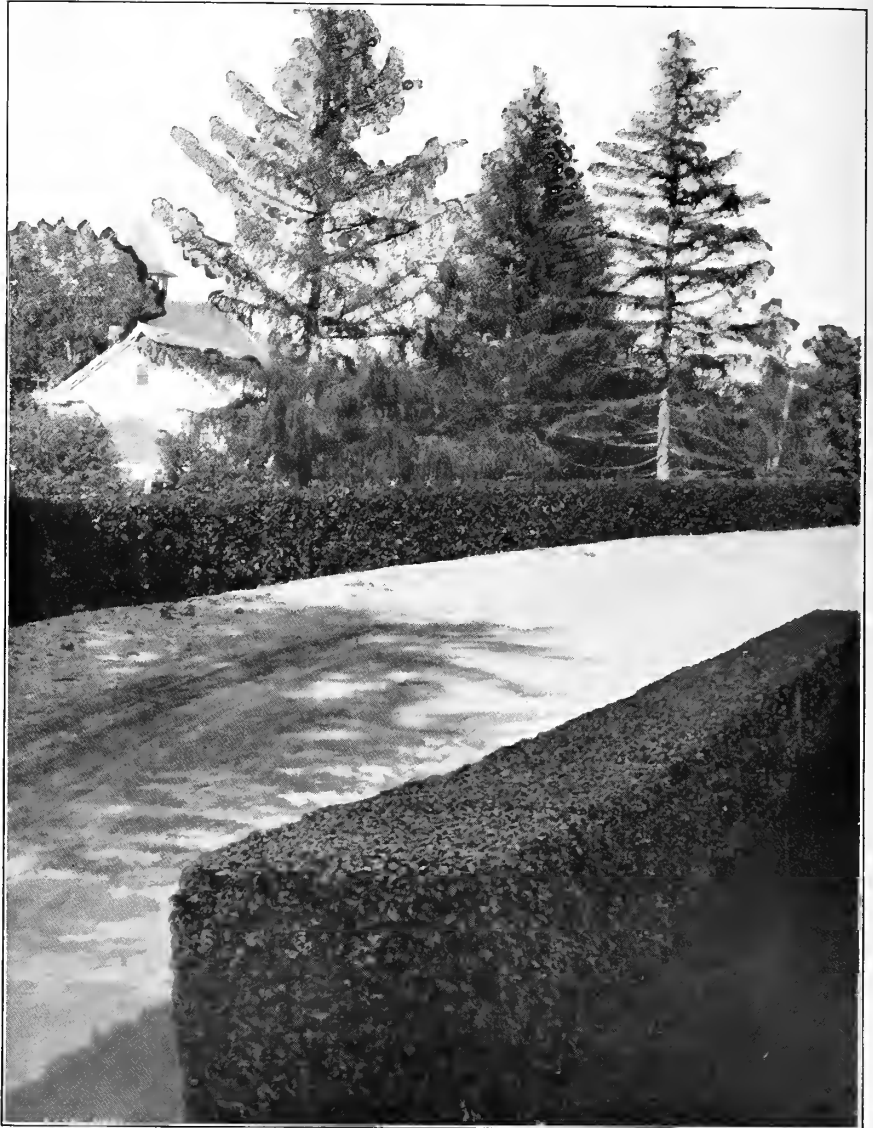
Caragana, Arborescens—Thrives in any well drained soil. Very compact in its growth and desirable for a medium or tall growing hedge. Hardy in the most exposed locations.

Caragana, Frutescens—Somewhat resembles the Arborescens except that it is lower growing. It is a very hardy shrub 6 feet in height and its blooming season is in May and June.

Hedgewood—This is something new in hedges and seems to be gaining in favor rapidly. Has olive-green foliage and reddish-brown twigs. Will stand frequent trimming and also makes a beautiful high hedge when left growing.

Russian Olive—A very large growing shrub. The leaves are narrow and silvery white in color. Stands trimming well, perfectly hardy and easy to grow.

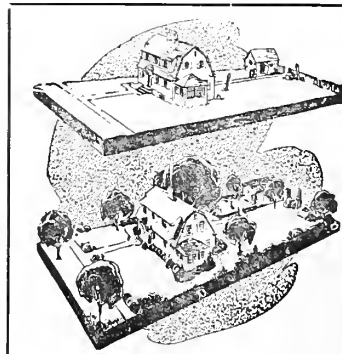
Spirea, Van Houtii—Although one of the most popular of the flowering shrubs, it makes a beautiful trimmed hedge and can be trimmed to almost any desired shape. When used in trimmed



Buckthorn

form, foliage forms a very dense mass of green throughout the summer. As a flowering hedge, when left untrimmed it has no equal, producing a mass of beautiful white flowers in May and June.

Lilac, Persian Purple—This rugged shrub when trimmed in hedge form presents a most pleasant appearance. The leaves are quite large and grow very prolifically when kept trimmed. It is very hardy and dense in growth, and can be trimmed to any form.



It's not a
Home—
until it's
Planted



Shade and Ornamental Trees

Ash, American, White or Green—A native of fine symmetrical outline; valuable for street and park purposes. Thrives best in North and South Dakota.

Birch, Paper or Canoe—One of the handsomest trees in cultivation and a vigorous grower. When young the bark is dull brown, but changes as the tree grows older to a shiny, silky white, rendering it very attractive.

Birch, European, White—A distinct, native species of vigorous, rapid growth. Bark white, leaves triangular, tapering and pointed. It is very hardy and will grow in sandy or rocky soil and in any climate.

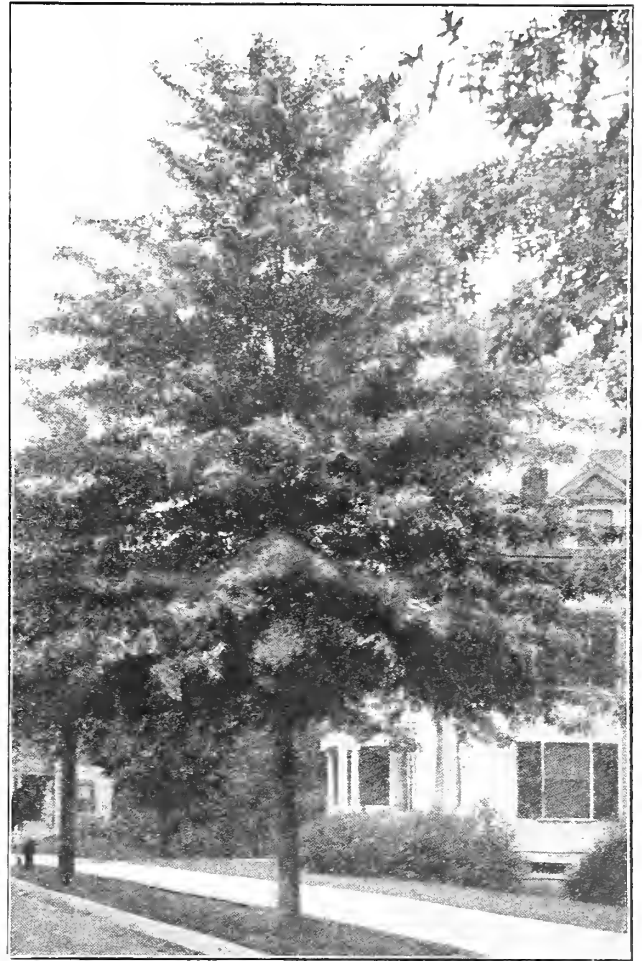
Box Elder, Ash-Leaved Maple—This species is easily distinguished by the pinnate leaves and greenish-yellow bark. It grows rapidly into a large, spreading tree; found valuable for planting timber claims, shelter belts, etc., in the west where it endures both drought and cold.

Catalpa, Speciosa—Very fine for shade and ornamental purposes; never subject to the attack of insects. Hardy in Southern Minnesota and the South.

Chinese Elm (*Ulmus Pumila*)—A very hardy specie extensively grown in Siberia and Northern China. The tree is not as large as our American Elm, but is very graceful and shapely. It has become very popular in some localities on account of its ability to thrive on very dry soil and in extreme climates. It is a fast grower, making a medium sized tree much sooner than the average shade tree. It is a wonderful tree for street planting as it reaches maturity earlier and does not become overgrown.

Elm, American, White—This is the noble spreading and drooping tree of our own forests. A fast grower, extremely hardy and in every way desirable for street and park planting. The American Elm is the first choice of the experienced landscape designer.

Hackberry—A very handsome native tree of rapid growth and great vigor. Bears transplanting well. The character of its growth is similar to the Elm, though the top is not quite so spreading as that variety.



American Elm

Horse Chestnut or Buckeye—This tree has an elegant pyramidal form with large, lobed leaves and showy panicles of white flowers. Tree hardy, vigorous and free from insect pests and is among the first trees to unfold its leaves in the spring.

Linden, American or Basswood—Rapid growing large sized tree with remarkable straight trunk; deep green, heart-shaped leaves and clusters of fragrant yellow flowers.

Locust, Black—Very pretty shade or ornamental tree, with sweet scented flowers in spring. Not overly hardy.

Locust, Honey—Tree of very open handsome habit and finely divided foliage. Winter bark brown and olive, while twigs shine as if polished. Hardy.

Maple, Norway—A tree of foreign origin; a sturdy and symmetrical grower, forming a broad, spreading rounded head. The leaves are deep green, large and broad, and cling to the branches longer than other sorts.

Maple, Sugar or Rock—A valuable native tree for lumber as well as shade and ornamental purposes. It is adaptable to all locations. Roots deeply and grows symmetrically into a tree of large proportions.



Japanese Barberry



Maple, Weir's Cut Leaf—A very beautiful silver leaf sort with delicately cut leaves and distinct half-drooping habits. It grows rapidly, forming a straight, upright trunk with slender branches that curve gracefully downward. Very hardy.

Maple, Silver or Soft—A magnificent shade and ornamental tree of rapid growth. It is perfectly hardy and will thrive in any soil and in any locality. The leaves are beautifully shaped and have a silvery gleam. The hardiness and ease of culture of this tree makes it one of the most desirable for street and park planting.

Mountain Ash, European—A fine, hardy tree; head dense and regular, covered from July to winter with large clusters of bright scarlet berries. Very popular for lawn planting. Hardy in all sections.

Mulberry, Russian—It is largely planted for screens and windbreaks, also for shade trees. The fruit, which is rather small, is appreciated by birds and fowls.

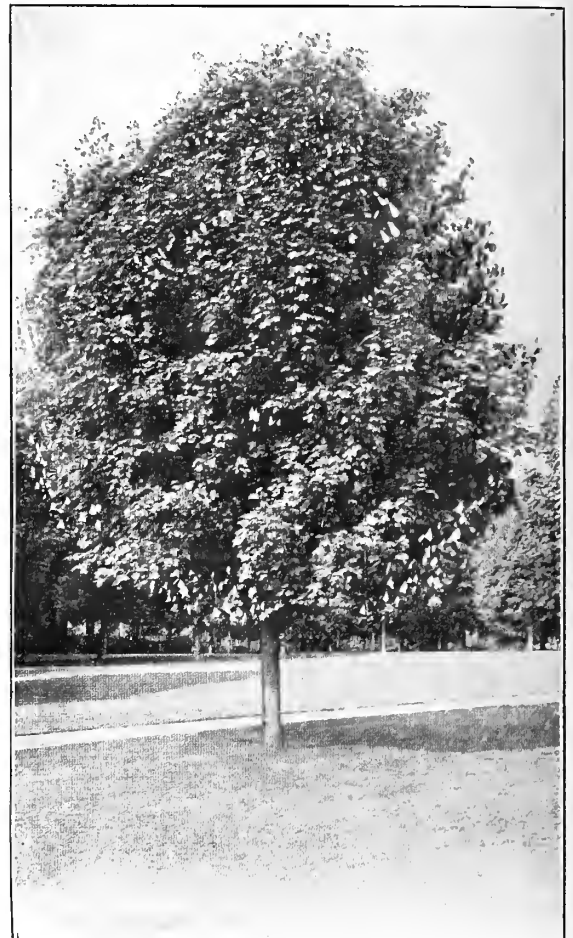
Newport Plum—A plum tree of striking appearance; moderately vigorous, upright growing, hardy, foliage of a deep reddish-purple color, retaining its color throughout the season; fruit is small to medium in size.

Oak, Scarlet—One of the best of the oak family. It forms a fine large tree of vast proportions, the large leathery leaves turning to a fiery scarlet in autumn.

Poplar, Bolleana—Much like the Lombardy in narrow upright growth. Leaves gracefully cut, light green above and clear white beneath. Very attractive olive-green bark. Very hardy.

Poplar, Balm of Gilead—A handsome native with thick, dark ovate leaves, silvery beneath. The spicy gum of the buds is used medicinally.

Poplar, Canadian—A variety of the Russian Poplar which has proven extremely popular on the western prairies. This tree is especially distinguished



Hard Maple



Horse Chestnut

**The Chinese
Elm
will do well in
any climate**

from the Carolina type by its light green bark and slightly oblong lobed leaves. The best poplar for windbreak purposes.

Poplar, Cottonwood—A tall native tree with shiny leaves, attaining a height of 80 to 100 feet. Grows rapidly and is very hardy, thriving under most adverse conditions.

Poplar, Lombardy—Of obelisk form, growing rapidly to extravagant heights. Is much used for screen hedges. Makes a striking feature in any landscape.

Poplar, Northwest—A recent introduction that is proving very popular on account of its extreme hardiness. Particularly adapted to North Dakota, Montana, and Northern Minnesota.

Poplar, Norway—Unexcelled for its quick growth and effect. It outgrows the Cottonwood and is extensively planted where quick groves and windbreaks are desired. This variety is highly recommended by the government to be planted for lumber purposes.

Poplar, Silver—This is a very beautiful ornamental tree. Leaves white as snow beneath, upper surface green. Extremely hardy, especially adapted to dry upland sections.

Poplar, Simoni—Similar to the Balm of Gilead and a very rapid grower. Useful for quick growing windbreaks. It has been planted as far north as Manitoba with entire success.

Poplar, Volga—A new hardy tree from Russia. Of upright growth, similar to the Lombardy, except that leaves are larger and of better form. Branches much stronger. Vigorous and hardy.

Walnut, Black—A majestic tree, growing to great size; bark rough and dark; foliage beautiful. It does well on most soils and is profitable to plant.

WEeping ORNAMENTAL TREES

Niobe Weeping Willow—A hardy tree with graceful, drooping, golden twigs, very desirable for park or lawn purposes. Well suited to planting anywhere in the northern states.

Wisconsin Weeping Willow—A very graceful, rapid growing tree. Not considered hardy north of the Twin Cities.

Weeping Mountain Ash—A very novel tree in appearance. The branches have a turning and twisting habit which produces a curious effect.

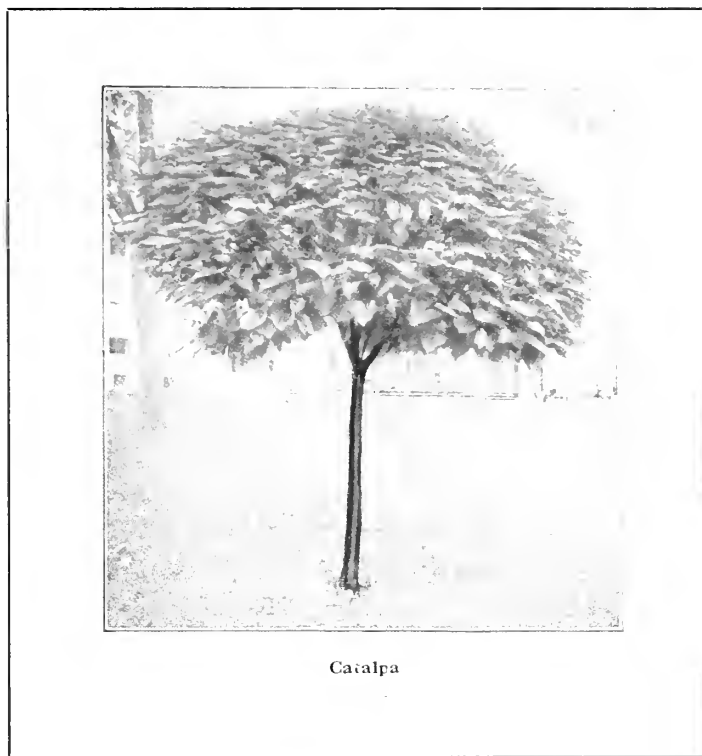
Weeping Mulberry—One of the most graceful weeping trees known, forming a perfect umbrella-shaped head with long slender branches drooping to the ground parallel to the stem. Has beautiful foliage, rather small, handsomely cut.

NUT TREES

We surely owe it to the coming generations, if not to ourselves, to plant liberally of nut bearing trees. Black Walnut lumber, for instance, is now so scarce that the price is almost prohibitive. What better legacy can you leave your children and grandchildren than a fine grove of Black Walnut? In addition to a lumber value increasing yearly, they will soon be producing a fine crop of nuts regularly.

Black Walnut—A native species of great size and majesty. Bark very dark, deeply furrowed, foliage beautiful, nut round. One of the most prized American lumber. Somewhat slow to start but makes good growth after established.

Butternut—A native tree of medium size, spreading head, reddish colored, dark foliage, very thick. Nut oblong and rough.



Forest Tree Seedlings



Trees and Shrubs packed in this manner with plenty of wet excelsior are almost certain to reach their destination in prime condition. We use the utmost care in our packing department.

THERE a large number of trees are to be planted, such as for permanent groves or windbreaks, it is highly advisable to use the seedlings, that is trees not over four to five feet high. They are easier to plant and care for and the cost is but a fraction of what the larger sizes would reach. Before planting a grove or windbreak have ground well enriched and thoroughly worked and dragged smooth as you would for corn. There are many methods of laying out a grove all of which have their merits, but in general we believe the following to be the one best suited where a large number of seedlings are to be planted.

First mark out your rows the desired distance apart, not less than eight feet, then with a plow run a furrow as deep as possible, throwing the dirt both ways. Next lay the seedlings in the trench with the tops resting on one side, then with one horse, run the plow along the opposite side to throw the dirt back on the roots; next straighten the trees and tramp the dirt firmly around the roots. Follow up on the other side of the trench and tramp again. This will leave very little earth to throw in by hand. The distance apart in the row differs according to the use intended. Willows, where used as a snow hedge, should not be set more than three feet apart in the row and cut back within a foot of the ground. For a grove, such trees as Ash, Elm, Box Elder and Maple are best set at least eight feet and joints broken every second row. With the latter trees many plant a Poplar between each tree in the row. They make a rapid growth and protect the slower growing trees when young. As the permanent grove attains a height of ten to fifteen feet the Poplar can be cut out, giving an abundance of firewood. Keep free from grass and weeds by frequent cultivation and a good mulch around the trees will help retain the moisture during the hot weather in summer. All of the varieties listed as seedlings may be had in larger sizes but are not listed under "Shade and Ornamental Trees" to avoid duplication.

Ash, American, White or Green—A native of fine symmetrical outline; valuable for street and park purposes. Thrives best in North and South Dakota and Minnesota.

Box Elder, Ash-Leaved Maple—This species is easily distinguished by the pinnate leaves and greenish-yellow bark. It



grows rapidly into a large, spreading tree; found valuable for planting timber claims, shelter belts, etc., in the West, where it endures both drought and cold.

E'm. American, White—This is the noble spreading and drooping tree of our own forests. A fast grower, extremely hardy and in every way desirable for street and park planting. The American Elm is the first choice of the experienced landscape designer.

Maple, Silver or Soft—A magnificent shade and ornamental tree of rapid growth. It is perfectly hardy and will thrive in any soil and in any locality. The leaves are beautifully shaped and have a silvery gleam. The hardiness and ease of culture of this tree makes it one of the most desirable for street and park planting.

Poplar, Balm of Gilead—A handsome native with thick, dark ovate leaves, silvery beneath. The spicy gum of the buds is used medicinally.

Poplar, Canadian—A variety of the Russian Poplar which has proven extremely popular on the western prairies. This tree is especially distinguished from the Carolina type by its light green bark and slightly oblong lobed leaves. The best Poplar for windbreak purposes.

Poplar, Cottonwood—A tall native tree with shiny leaves, attaining a height of 80 to 100 feet. Grows rapidly and is very hardy, thriving under most adverse conditions.

Poplar, Lombardy—Of obelisk form, growing rapidly to extravagant heights. Is much used for screen hedges. Makes a striking feature in any landscape.

Poplar, Northwest—A recent introduction that is proving very popular on account of its extreme hardiness. Particularly adapted to North Dakota, Montana, and Northern Minnesota.

Poplar, Norway—Unexcelled for its quick growth and effect. It outgrows the Cottonwood and is extensively planted where quick groves and windbreaks are desired. This variety is highly recommended by the government to be planted for lumber purposes.

Poplar, Silver—This is a very beautiful ornamental tree. Leaves white as snow beneath, upper surface green. Extremely hardy, especially adapted to dry upland sections.

Willow, Golden Russian—A very showy variety, with golden bark of high color, and very showy in winter. Valuable for windbreaks.

Willow, Laurel—A handsome, close-growing tree, leaves dark, glossy green and highly ornamental. Extensively planted for a windbreak and hedge purposes.

Willow, White—This is the large Willow that has been used so many years for hedges around farms. It does the best in low places.



**The Value of a
Good Windbreak
Can Hardly be
Estimated
in
Dollars and Cents**

NORTHWEST POPLAR

A very desirable tree for North and South Dakota, Northern Minnesota and Montana. Originated in the Turtle Mountains near the Canadian line. Splendid for windbreak, shelter-belt or boulevard.

**Plant Now for
the Benefit of
Yourself
and the Generations
to
Follow**



Evergreens

IN building a landscape Evergreens may be put to so many uses that they are almost an indispensable factor. For a windbreak or shelter belt there is nothing can equal them and for that purpose two or three rows planted on the North and West around the buildings will, in a short time, be very effective in keeping out the cold winter blasts and preventing the snow from piling up in the yard. Plant them twelve feet apart in the row and the rows sixteen feet apart and it is a very good idea to alternate the rows with spruce and pine. The low growing kinds, or dwarfs, may be used about the stone or brick foundation walls; to fill in hard angles or soften heavy corners. Plant them always where they have intimate relation to the activities of the home; where they can be seen and felt. In handling and planting never allow the roots to become dry or exposed to the sun or air. Their sap is resinous and once hardened no amount of moisture will dissolve the resin. Dip the roots in thin mud as soon as unpacked and leave them there until the last minute before setting out. Tramp the earth around the roots as firmly as possible and use plenty of water when planting. Remember Evergreens are always in full leaf and evaporation is constantly going on, and unless firmly established when planted the wind will work them loose, destroy the young root hairs and permit the air to get down to the roots. Cultivate once each week until July first, then mulch heavily with straw, lawn clippings or litter to keep the ground moist and cool during July and August. Never sprinkle the tops of your Evergreens. Evergreens can be transplanted only in the spring. Specimen Evergreens or large sizes are best





shipped balled and burlapped. These trees are dug with a large ball of earth without disturbing the roots in the least and the ball securely wrapped with burlap. When shipped this way they are almost sure to grow. When planting balled and burlapped evergreens, do not remove the burlap from the ball unsharp knife and cut away and remove as much of the burlap as is possible till the tree is placed in the hole ready to pack the dirt about them. Use a without breaking the ball of the dirt. Plant them 2 inches deeper than they stood in the nursery.

Arbor Vitae, American—The finest evergreen for hedges. It grows rapidly and soon forms a beautiful, dense hedge that is very ornamental. May be trained in any desired shape and stands shearing well.

Arbor Vitae, Compacta—Dwarf dense little trees with light green foliage, neat and attractive. Useful for beds, borders, cemeteries and low growing hedges.

Arbor Vitae, Globosa—Of dense, dwarf habit globular in outline. Color a pretty light green. Requires no shearing and is always in good form.

Arbor Vitae, Golden—A beautiful variety of compact, globular form, color a lively yellowish green. One of the most handsome.

Arbor Vitae, Pyramidal—A superb new hardy sort of very compact habit. Grows ten to twelve feet in height and of pyramidal shape. Largely planted in cemeteries where spreading trees would be out of place.

Arbor Vitae, Siberian—Exceedingly hardy and keeps its color well in winter. Growth compact and globular. Makes an elegant lawn tree and can be trained to shape. Foliage dark green above and bluish beneath.

Cedar, Platt River Red—One of the best of Cedar family and thoroughly at home in the landscape. Hardy and needs very little care when once started.

Fir, Concolor—A very beautiful species with silvery gray bark on the young branches. Leaves long and beautifully silvered, arranged in double rows. Equal in color and beauty to the Colorado Blue Spruce.

Fir, Douglas—A Colorado specie of rapid growth. Makes a large symmetrical tree. Foliage bluish-green. Very drought resisting and may be planted in dry soils where others cannot survive.

Pine, Austrian or Black—Somewhat slow growing but very dense and compact. Foliage long, dark green. Does well on light soils where there is a fair amount of moisture.

Pine, Mugho—The low, regular, dwarf type of Montana, excellent for foundation planting and with low growing shrubs. Hardy anywhere.

Pine, Ponderosa—Bull pine. A native of the West. The best tree for dry soils but thrives in most any soil. Resembles the Austrian Pine. Extensively planted for windbreaks.

Pine, Scotch—Rapid growing, handsome when young. Often used for windbreaks. Attractive yellow bark. Inclined to raggedness when approaching old age.

Pine, White—The best pine for tall windbreaks. A handsome, graceful, fine-needled American variety with smooth green bark. Very rapid growth. Stands transplanting better than any other pine.

Larch, European—Like the Cypress it is a deciduous tree bearing cones



Showing Pyramidal Arbor Vitae dug with a solid ball of earth and burlapped. Evergreens handled in this manner are almost sure to grow.

like evergreens. The foliage is very fine needle-like, appearing earlier in the spring than any other tree and stays until very late fall. The tree is a perfect pyramid in shape and holds its contour until maturity. Very conspicuous on account of its bright green color, unusual needles and branching habit.

Juniper, Pfitzeriana—One of the most valuable of the spreading Junipers, forming a broad pyramid with horizontal spreading branches, and nodding branchlets. Leaves pointed and spreading, handsome brownish violet.

Juniper, Savin—Being entirely hardy and easy to establish, this is probably the most used among the low growing Junipers. Spreading shrub form with slender branches and dark green leaves. Excellent for foundation work and for underplanting.

Juniper, Swedish—Columnar growth and very trim. Branches upright and leaves light green. Fine for for-



Colorado Blue Spruce, Blue Type



mal gardens and for cemeteries. Reaches a height of from 8 to 10 feet.

Juniper, Virginiana—Tapering and symmetrical with bronze foliage in fall and early winter. Perfectly hardy and recommended where large trees are desired. Grows 25 to 30 feet high.

Spruce, Black Hills—Compact, shapely and of deep green color. As the name would imply it is a native of the Black Hills, hence naturally adapted to dry weather and high altitudes. Transplants easily and stands severe climatic conditions.

Spruce, Colorado Blue—Green type. The queen of ornamental evergreens and especially adapted to northern climates. Foliage varies from light silvery green to as deep a shade as the Norway.

Spruce, Colorado Blue—Shiners or Blue type. The same as the green type except in color, which is a rich silvery blue. They are much more rare than the green type, consequently higher priced but their effect in the landscape is wonderfully striking.



A Field of Norway Spruce and American Arbor Vitae

INFORMATION TABLES—Shade and Ornamental Trees

NAMES	FORM	GROWTH	REMARKS
Silver Maple (<i>Acer dasycarpum</i>)	Oval	Very Rapid	Ornamental tree, growing best in rich, moist soil.
Weir's C. L. Maple (<i>Acer dasycarpum</i>)	Weeping	Rapid	Graceful variety, remarkable for its drooping branches.
Box Elder (<i>Acer negundo</i>)	Round	Rapid	Very hardy in cold and dryness, largely used for shelter belts.
Norway Maple (<i>Acer platanoides</i>)	Round	Medium	Large handsome tree, leaves turn pale yellow in Autumn.
Schwedleri Maple (<i>Acer platanoides</i>)	Round	Medium	Beautiful foliage tree, leaves red in spring, green in midsummer.
Sugar or Rock Maple (<i>Acer Saccharum</i>)	Oval	Slow	An excellent street and shade tree.
American Ash, White (<i>Fraxinus Americana</i>)	Oval	Medium Rapid	Makes a splendid street tree. Assumes golden tone in Autumn.
American Ash, Green (<i>Fraxinus Lanceolata</i>)	Oval	Medium Rapid	Makes a splendid street tree.
Eirch, European White (<i>Betula Alba</i>)	Pyramidal	Medium Rapid	White bark, effective when grouped against dark green background.
Birch, Cut Leaf (<i>Betula Alba Pendula</i>)	Weeping	Medium Rapid	A graceful lawn specimen.
Catalpa, Speciosa (Western Cata'pa)	Pyramidal	Very Rapid	Large, light green leaves; showy white flowers, followed by long seed pods.
Catalpa Bungei (Umbrella Catalpa)	Round	Rapid	Highly ornamental tree; large foliage, white flowers, requires moist soil.
Hackberry (<i>Celtis Occidentalis</i>)	Oval	Medium	Ornamental tree, thrives in almost any soil.
Horsechestnut (<i>Aesculus Hippocastanum</i>)	Oval	Rapid	One of the most popular of shade trees; valuable lawn tree.
American Linden (<i>Tilia Americana</i>)	Oval	Rapid	Extensively planted as an Ornamental and Shade tree.
Black Locust (<i>Robinia Pseudacacia</i>)	Oval	Medium	
Honey Locust (<i>Glenditsia triacanthos</i>)	Oval	Medium	Thorny tree with fragrant white flowers in May.
American Mt. Ash (<i>Sorbus Americana</i>)	Round	Medium	Ornamental tree, small bright red berries.
E. Mt. Ash (<i>Sorbus aucuparia</i>)	Round	Medium	A valuable lawn tree, ornamental, Orange scarlet berries.
Weeping Mt. Ash (<i>Sorbus Pendula</i>)	Weeping	Slow	Ornamental weeping tree with curious pendulous branches.
Russian Mulberry (<i>Morus Alba</i>)	Round	Medium	Small ornamental tree, fruit varies from creamy white to deep red.
Scarlet Oak (<i>Quercus Coccinea</i>)	Oval	Medium	Most striking Autumn colors, tall stately growers, succeed in dry places.
Carolina Poplar (<i>Populus Eugenei</i>)	Pyramidal	Very Rapid	Valuable for quick shade.
Lombardy Poplar (<i>Populus Nigra Italica</i>)	Columnar	Very Rapid	With age it becomes one of the most striking and picturesque of trees.
Bolleana Poplar (<i>Populus Bolleana</i>)	Columnar	Very Rapid	A very tall, narrow topped tree, with cottony branches.
Simoni Poplar (<i>Populus Simoni</i>)	Oval	Rapid	Hardy small tree, good foliage.
Volga Poplar (<i>Populus Volga</i>)	Columnar	Rapid	Vigorous and hardy, striking; picturesque species.
Balm of Gilead Poplar (<i>Populus canolicans</i>)	Pyramidal	Very Rapid	Excellent shade and street tree.
American Elm (<i>Ulmus Americana</i>)	Vasiform	Rapid	An excellent street and shade tree.
Moline Elm (<i>Ulmus Americana Moline</i>)	Oval	Very Rapid	Grows vigorously and quickly.
Vase Elm (<i>Ulmus Vase</i>)	Vasiform	Very Rapid	Large foliage, quick growth and uniform in shape.
Chinese Elm (<i>Ulmus Pumila</i>)	Round	Medium	A beautiful lawn tree, small refined leaves.
Black Walnut (<i>Juglana Nigra</i>)	Medium	Medium	Valuable nut bearing and shade tree.
Newport Purple Plum (<i>Prunus Pissardi</i>)	Oval	Rapid	Small ornamental tree, Purple leaves all summer.

Climbing Vines

VARIETY	COLOR OF BLOOM	TIME OF BLOOM	REMARKS
Ampelopsis, Englemanni	No Bloom		Clings to brick or stone, beautiful red foliage in fall.
Ampelopsis, Veitchii	No Bloom		Climbing vine, foliage green changing to orange and red in the fall.
Ampelopsis, Quinquefolia	No Bloom		Rapid grower, beautiful foliage.
Bittersweet	Yellow	Spring	Twining vine, has clusters of orange capsuled fruit in fall.
Clematis Henryi	White	Midsummer	Flowers large and very showy.
Clematis, Jackmanii	Rich Purple	Midsummer to Fall	The most beautiful of Clematis.
Clematis, Madam Ed Andre	Crimson	Free Bloomer	Flowers large, free flowering, continuous bloomer.
Clematis, Paniculata	White	September	Profuse bloomer, useful for covering verandas or trellis.
Clematis, Coccinea	Coral Red	June to Fall	Ornamental foliage, profuse bloomer of small bell shape flowers.
Clematis, Ramona	Sky Blue	Midsummer	Flower large, very hardy.
Clematis, Virginiana	White	August	Rapid grower, producing flowers in the fall.
Dutchman's Pipe	Yellow-Brownish	Early Summer	Fine foliage vine, flowers resembling a pipe in shape.
Hall's Japanese Honeysuckle	White to Yellow	July to Nov.	Vigorous grower, hardy, free bloomer.
Matrimony Vine	Purple	All Summer	Continuous bloomer, followed by scarlet berries
Wisteria	Pale Blue	May, June	Rapid growing vine.
Honeysuckle Scarlet Trumpet	Scarlet	Early Summer	A special favorite with all lovers of old fashioned flowers.



Perennials

NAME	HEIGHT	TIME OF BLOOM	COLOR	REMARKS
Achillea, Millefolium	18 inch	July to October	Rosy to Pink	Effective on edge of shrubbery or in borders.
Achillea, The Pearl	15 to 24 in.	All Summer	Pure White	Very effective to soften conflicting notes in color scheme.
Anchusa, Dropmore	4 to 5 ft.	June to Sept.	Purple	Tall spikes of beautiful flowers.
Gypsophila, Baby's Breath	2-3 feet	July to August	White	Dense foliage, mist-like bloom.
Baptisia, Australis	2-3 feet	May-July	Blue Indigo	Likes sunlight and dry soil.
Bleeding Heart (Spectabilis)	2 feet	May-July	Pink	Border planting, very attractive.
Canterbury Bell (Campanula)	18-24 inch	June-July	Blue to White	Moss effect of bloom in June.
Chinese Lantern Plant (Physalis Franchetii)	2 feet	Early Fall	Orange Red	Beautiful winter decoration.
Columbine (Coerulea)	12 inches	April to July	Assorted	Useful in low border planting.
Coreopsis, Lancolata	20 inches	June to October	Bright Yellow	Used extensively for cut flower.
Dianthus, Plumarius	10 inches	June	Assorted	Use in fore part of border or in clumps by themselves.
Echinacea	3 feet	June-July	Rose	Border planting, thrives in any soil.
Flax Perennial	15 inch	May to October	Light Blue	Excellent for bed planting.
Fox Glove (Digitalis)	2-3 ft.	June-July	Assorted	Very attractive in borders. Biennial.
Giant Daisy (Pyrethrum)	2-3 ft.	Aug. to Oct.	White	A charming cut flower.
Gaillardia (Grandiflora)	15 inch	All Summer	Yellow, Br. Center	Gorgeous effect in beds or borders.
Golden Glow (Rudbeckia)	5-6 ft.	July-Aug.	Golden Yellow	Used extensively as backgrounds.
Helenium (Dutumn)	2-3 ft.	Aug. to Oct.	Cream	Desirable for cut flowers or borders.
Helenium (Riverton Gem)	2 ft.	Aug. to Oct.	Golden Yellow	Desirable for cut flowers or borders.
Hibiscus (mallow Marvels)	4-5 ft.	Aug.-Sept.	Crim., Pink, Wh.	A showy background with tall shrubs.
Hollyhocks	6-8 ft.	June-Sept.	Assorted	Extensively used as backgrounds.
Larkspur (Delphinium Balladonna)	18-24 in.	June-July	Turquoise Blue	Excellent for background planting and cut flowers.
Larkspur, Chinese	2 ft.	July-Aug.	Genetian Blue	Excellent for cut flowers and bed planting.
Larkspur, Chinese Album	2 ft.	July-Aug.	White	Border planting.
Perennial Sweet Pea (Lathyrus)	Vine	June-Sept.	Assorted	Blooms profusely—fine for trellis or fence.
Hardy Narcissus	15 inches	May	White	Excellent cut flower.
Lily-Of-The-Valley (Majalis)	6 inches	May	Waxy White	Requires shade—dainty for cut flowers and sprays.
Monarda (Didgma)	20-30 inches	June-Aug.	Crimson	Mass plantings—use in darker corners of landscape schemes.
Physostegia (Virginianna)	2-3 ft.	July-Aug.	Asst. W., R., Pu.	Makes striking border effects.
Platycodon, Grandiflorum	18 inches	June-Oct.	Deep Blue	Old fashioned garden flower.
Platycodon, Grandiflorum Alba	18 inches	June-Oct.	White	Bell shaped, requires medium sandy loam.
Poppy, Orientalis	2-3 ft.	May-July	Orange Scarlet	Attractive when used with shrubbery.
Sedum, Spectabilis	18 inches	Aug.-Oct.	Rose	Beautiful foliage plant for borders.
Shasta Daisy, Medium	18 inches	June-Sept.	White	Conspicuous white border plant, cut flowers.
Spiraea, Filipendula	12-18 in.	June-July	White	Low-tufted plant, hardy, thrives in any soil.
Sweet William, Barbatus	15 inches	June-July	Assorted	Used in fore part of borders, or individual clumps.
Thousand-To-One-Aster, Boltonia	4-5 feet	June-Sept.	Pink	Used for background planting in late summer.
Veronica, Longifolia	2 feet	June-Sept.	Blue	Cut flower—hardy border plant.
Yucca, Filamentosa	5-6 feet	June-July	White	Well adapted to isolated locations.

Roses

(H.P.) Hybrid Perpetual, (Rug.) Rugosa, (Cl.) Climbing.

NAME	CLASS	TIME OF BLOOM	COLOR	NAME	CLASS	TIME OF BLOOM	COLOR
American Beauty	H. P.	Very Early	Crimson	Harrison Yellow	H. P.	June	Yellow
Amelia Grovonaux	Rug.	All Summer	Red	His Majesty	H. P.	Midsummer	Pink
Anna de Diesbach	H. P.	June	Pink	J. B. Clark	H. P.	June	Dk. Scarlet Crim.
Baby Rambler	Cl.	All Summer	White	John Hopper	H. P.	Midsummer	Rose Pink
Baby Rambler	Cl.	All Summer	Pink	LaFrance	H. P.	All Summer	Rose, Pink
Baby Rambler	Cl.	All Summer	Red	Louis Van Houttii	H. P.	Midsummer	Red
Belle Poitevine	Rug.	Midsummer	Magenta-Pink	Mable Morrison	H. P.	Midsummer	White
Baltimore Belle	Cl.	Midsummer	Bluish White	Madam Plantier	H. P.	June	White
Blanche de Coubert	Rug.	All Summer	White	Magna Charta	H. P.	Free Bloomer	Pink
Captain Hayward	H. P.	June	Scarlet Crimson	Mrs. John Laing	H. P.	All Summer	Soft Pink
Climbing Amer. Beauty	Cl.	Very Early	Red	New Century	Rug.	Intermit. All Sum.	Pale Pink
Conrad F. Meyer	Rug.	June	Silvery Pink	Paul's Scarlet	Cl.	Midsummer	Vivid Scarlet
Crimson Rambler	Cl.	Very Late	Deep Crimson	Paul Neyron	H. P.	June and Fall	Pink
Dorothy Perkins	Cl.	Very Late	Shell Pink	Persian Yellow	H. P.	Midsummer	Deep Yellow
Excelsa	Cl.	Very Late	Carmine Pink	Prince Camille de Rohan	H. P.	June and Fall	Deep Maroon
Flower of Fairfield	Cl.	All Summer	Crimson	Prairie Queen	Cl.	Midsummer	Pink
Frau Karl Druschki	H. P.	All Summer	White	Seven Sisters	Cl.	Midsummer	Pink
General Jacqueminot	H. P.	June	Clear Red	Soliel D'Orr	H. P.	June	Reddish Gold
General Washington	H. P.	Midsummer	Red	Single Red Climber	Cl.	Midsummer	Red
Grootendorst	Rug.	All Summer	Bright Crimson	Sir Thos. Lipton	Rug.	All Summer	White
Gruss en Teplitz	H. P.	All Summer	Scarlet	Tausendschoen	Cl.	All Summer	White to Pink
Hansa	Rug.	All Summer	Red	Ulrich Brunner	H. P.	June and Fall	Red

Flowering Shrubs

NAME	HEIGHT	TIME OF BLOOM	COLOR	REMARKS
Hercules Club (<i>Aralia spinosa</i>)	6-8 ft.	Midsummer	White	For quick screening tropical appearance.
Old Man (<i>Artemisia</i>)	3-4 ft.	Aug.-Sept.	Creamy White	
Cotoneaster (<i>Acutifolia</i>)	8-10 ft.	Early Summer	White	Very hard; good hedge plants.
Cranberry, High Bush (<i>Urburum Opulus</i>)	8-12 ft.	May	White	Effective border, red berries, fall coloring.
Currant, Alpine (<i>Ribes Alpinum</i>)	3-4 ft.	May	Yellow	Dense and upright, excellent for dry sterile soils and under planting.
Currant, Yel. Fl. (<i>Ribes Americanum Floridum</i>)	5-6 ft.	May	Yellow	Fragrant flowers, grows well in shady locations.
Crab, Double Flowering (<i>Malus ioensis Plena</i>)	15 ft.	May	Pink to White	Vigorous grower, attractive in groups, borders or as specimens.
Dogwood, Coral (<i>Cornus Alba Sibirica</i>)	5-8 ft.	May-June	Yellowish White	In sun or shade, beautiful twigs, gray berries.
Dogwood, Red Osier (<i>Cornus Stolonifera</i>)	6-10 ft.	June	White	Border and Specimen planting.
Dogwood, Golden Bark (<i>Cornus Luta</i>)	6-10 ft.	June		Effective for contrasting.
Deutzia-Rosea (<i>Rose Panicle Deutzia</i>)	3-5 ft.	June	Pink	Only true Pink Deutzia, Dwarf.
D. Fl. Almond (<i>Glandulosa Amygdalus Com.</i>)	3-5 ft.	May	Red-Pink or White	Solid mass of brilliant bloom, very early.
Elder, Common (<i>Sambucus Canadensis</i>)	8-12 ft.	Early Summer	White	Fragrant flowers, black fruit enjoyed by birds.
Elder, Golden (<i>Sambucus Canadensis Aurea</i>)	6-8 ft.	June, July	White	Beautiful bright golden foliage, hardy, rapid grower.
Elder, Red Berried (<i>Sambucus Racemosa</i>)	8-12 ft.	April, May	White	Vigorous grower, hardy.
Forsythia, Fortuna	6-8 ft.	April, May	Bright Yellow	Upright spreading bush, beautiful flowers and foliage.
Forsythia, Suspensa (<i>Weeping Forsythia</i>)	6-8 ft.	April, May	Yellow Striped	For borders, walks, embankments, or vine.
Honeysuckle Tartarian (<i>Lonicera Tartarian</i>)	8-15 ft.	May, June	Red, Pink, or Wh.	For hedges, borders, screens.
Honeysuckle, Morrow (<i>Lonicera Morrow</i>)	4-6 ft.	May, June	Yellow	Fragrant flowers, foundation, borders, hedges.
Honeysuckle, Sc. Tr. (<i>Lonicera Sempervirens</i>)	Climbing	May, June	Red	Rapid growing vine, beautiful trellis covering.
Hydrangea P. G. (<i>Paniculata Grandiflora</i>)	3-6 ft.	Aug., Sept.	Wh. to Red. Br.	Very conspicuous, showy, useful in found., bord., single planting.
Hydrangea Aborescens Grandiflora	4-6 ft.	June, Aug.	Creamy White	All purposes, constant bloomer, fine for cutting.
Butterfly Bush (<i>Buddleia Davidii</i>)	3-6 ft.	Late Summer	Violet	Summer lilac, attracts butterflies, quick grower.
Juneberry (<i>Amelanchier</i>)	5-7 ft.	May	Pure White	Tree-form shrub, useful, fruit.
Lilac, Chas. X	8-10 ft.	May, June	Reddish Purple	Very hardy, flowers large and abundant.
Lilac, Com. Pur. (<i>Syringa Vulgaris Purpurea</i>)	8-12 ft.	May	Purple	Much used in hedges and individual planting.
Lilac, Common White (<i>Syringa Vulgaris Alba</i>)	8-10 ft.	May	White;	
Lilac, Josikaea (<i>Syringa Josikaea</i>)	6-10 ft.	June	Purple	
Lilac, Ludwig Spaeth	6-8 ft.	May, June	Dark Red. Purple	
Lilac, Madam Lemoine (<i>Syringa Lemoinei</i>)	6-8 ft.	May, June	Double, White	Semi-dwarf, early bloomer, feathery foliage.
Lilac, Marie Le Graye	8-10 ft.	May	White	Attractive shrub, graceful; mass of bloom.
Lilac, Persian Purple (<i>Syringa Persica</i>)	6-8 ft.	May, June	Purple	Splendid to add variety to heavier shrub masses.
Lilac, Persian White (<i>Syringa Persica Alba</i>)	6-8 ft.	May, June	White	Attractive coral-red fruit; withstands drought.
Lilac, President Grevy	5-8 ft.	May	Blue	Large growing shrub, gorgeous fall coloration.
Lilac, Rothomagensis (<i>Syringa Chlnensis</i>)	6-10 ft.	May, June	Reddish Purple	Best in half-shade, moist location.
Purple Leaf Plum (<i>Prunus Pissardi</i>)				For shady, dry places.
Prunus Triloba (<i>Prunus Amygdalus Triloba</i>)	6-8 ft.	May	Delicate Pink	Effective foliage plant, bright golden leaves.
Prunus Tomentosa	8-10 ft.	May	White	Fragrant flowers foundation planting.
Snowball, Viburnum Opulus Sterile	6-8 ft.	May, June	White	Very hardy and vigorous, border or as single specimen.
Snowball, Viburnum Dentatum	8-10 ft.	May, June	White	Blooms very young; one of the best Mock Orange.
Snowball, Viburnum Lentago	15-20 ft.	May, June	White	Large fragrant flowers, foundation plantings.
Spiraea, Anthony Waterer	3-3 ft.	July, Oct.	Dark Crimson	Need winter protection
Spiraea, Arguta	4-6 ft.	April, May	White	Everbloomer, foundation, border planting.
Spiraea, Billardi	4-5 ft.	July, Aug.	Pink	Everbloomer, foundation.
Spiraea, Bumalda	2 ft.	July, Sept.	Rose Pink	Rapid growth, produces large clusters of fragrant flowers.
Spiraea, Callosa Alba (<i>Japonica</i>)	2 ft.	June, Aug.	Pure White	
Spiraea, Callosa Rosea (<i>Fortunei</i>)	3-4 ft.	June, July	Deep Pink	
Spiraea Superba	3 ft.	June, July	Rose	Profuse blooming double white.
Spiraea Douglasi	5-7 ft.	July, Aug.	Deep Rose	Fragrant flowers, single white.
Spiraea, Froebell	2-3 ft.	July, Aug.	Rose Red	Masses of flowers cover bush. All purposes.
Spiraea, Opulifolia (<i>Physocarpus</i>)	6-8 ft.	June	White	Slender growth, graceful.
Spiraea, Prunifolia	4-5 ft.	April, May	White	One of the finest, double blue.
Spiraea, Sorbifolia	5-6 ft.	Midsummer	Pure White	Late bloomer, delicately formed leaves.
Spiraea, Salicifolia (<i>Latifolia</i>)	4 ft.	July, Aug.	Rose	
Spiraea, Thunbergii	3-5 ft.	April, May	Pure White	
Spiraea, Van Houttei	4-6 ft.	May	White	
Sumac, Cut Leaf Staghorn (<i>Rhus Typhina</i>)	10-12 ft.	No Bloom	No Bloom	
Sumac, Dwarf Staghorn (<i>Rhus Canadensis</i>)	3-5 ft.	No Bloom	No Bloom	
Sumac, Smooth (<i>Rhus Glabra</i>)	8-12 ft.	No Bloom	No Bloom	
Snowberry, Wh. (<i>Symphoricarpos Racemosus</i>)	4-5 ft.	July, Aug.	White	Dwarf; everbloomer; good facing shrub.
Snowberry, Red (<i>Symphoricarpos Vulgaris</i>)	4-5 ft.	July, Aug.	Red	Small foliage, very free flowering.
Syringa, Golden	2-3 ft.	May, June	White	In borders, in dry locations, everbloomer.
Syringa, Lemoine (<i>Philadelphus Lemoinei</i>)	4-5 ft.	June, July	Creamy White	
Syringa, Mock Orange (<i>Philadelph. Grandiflora</i>)	5-7 ft.	May, June	Creamy White	Dwarf; everbloomer, facing shrub.
Syringa, Virginialis (<i>Philadelph. Virginialis</i>)	6-8 ft.	May, June	White	
Syringa, Mont Blanc	5-6 ft.	May, June	White	
Weigela Rose, Anabillis	4-6 ft.	May, June	Rose	
Weigela, Eva Radke (<i>Wel. Hy. Eva Rathke</i>)	4-6 ft.	All Summer	Deep Crimson	
Weigela Variegated Leaf (<i>Nana Variegata</i>)	4-6 ft.	May, June	White	

Clinton Falls Nursery Company
OWATONNA, MINNESOTA

